

HARRY CHARLES

Property Specialists



Bradshaw Road, Watford, WD24 4DF

£950 Per month



**** LARGE DOUBLE ROOM AVAILABLE IN SHARED HOUSE - RECENTLY REFURBISHED- COMMUNAL LOUNGE AND DINING AREA - COMMUNAL GARDEN - AVAILABLE NOW ****

We have a large double EN-SUITE room available in a newly refurbished luxurious house 10-15mins walk from Watford Junction Station. With use of communal kitchen, dining & lounge area and garden. The rent also includes water, gas, television licence, broadband & electricity and a cleaner to clean communal areas.

The house would be Ideal for professionals working locally in Watford, working from home or for those who have to commute into London.

- Large double room in shared house
- Bills included
- Garden
- Recently refurbished
- Communal dining and lounge area
- Available 5th November 2022

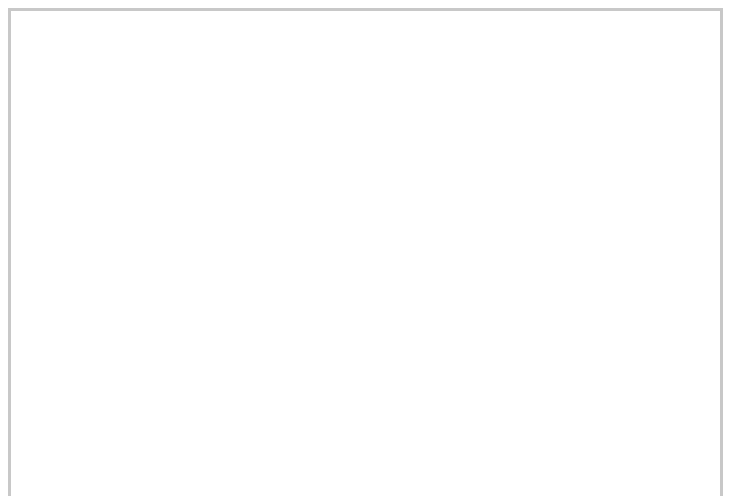
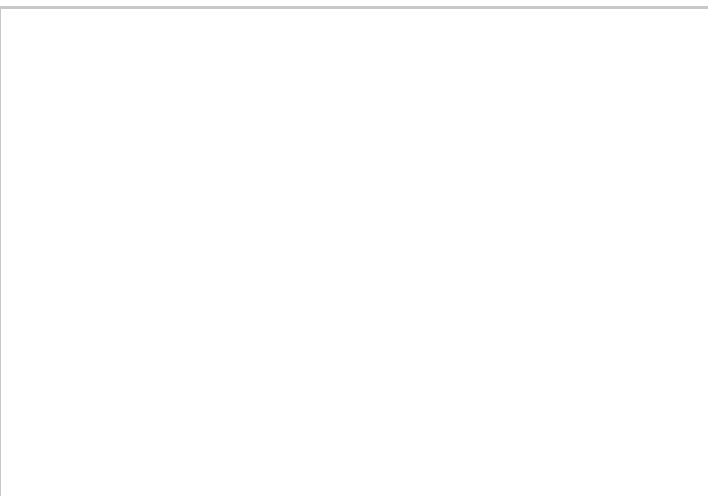
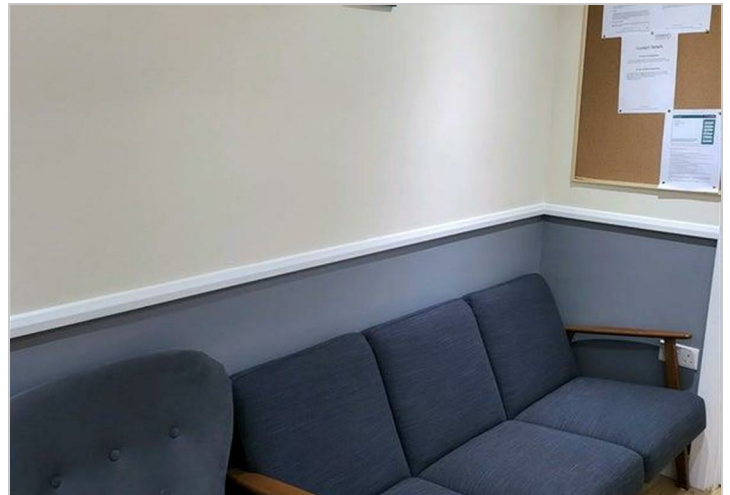
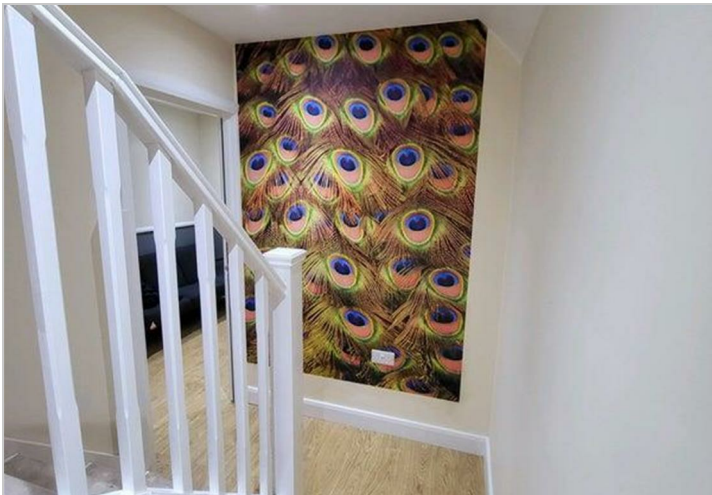
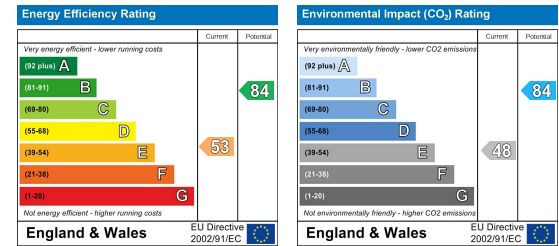


Additional Information

Area Map



Energy Efficiency Graph



These particulars, whilst believed to be accurate are set out as a general outline only for guidance and do not constitute any part of an offer or contract. Intending purchasers should not rely on them as statements of representation of fact, but must satisfy themselves by inspection or otherwise as to their accuracy. No person in this firm's employment has the authority to make or give any representation or warranty in respect of the property.