



MILES ESTATE AGENTS

**Parsonage Cottage 21 Mount Street Bishops
Lydeard Taunton TA4 3AN £595,000**



A spacious and well presented 4 double bedroom extended detached sandstone cottage tucked away down a lane with around an acre of gardens and grounds in the heart of this superb Quantock village with its extensive range of amenities on hand and within Kingsmead catchment area. 2 reception rooms, modern kitchen/breakfast room with island, useful study and lots of privacy, garage and parking - early viewing highly recommended. Freehold Council Tax Band E EPC : D.





Features:

- Entrance hall
- Spacious living/dining room with woodburning stove
- Sitting room / snug
- Kitchen / breakfast room
- Utility & cloakroom
- Useful study
- 4 good size bedrooms
- En suite & family shower room
- Gardens & grounds of c.1 acre
- Lots of parking & single garage
- Freehold
- Council Tax Band E
- EPC : D



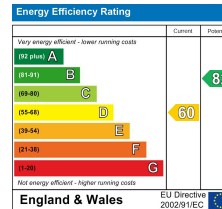
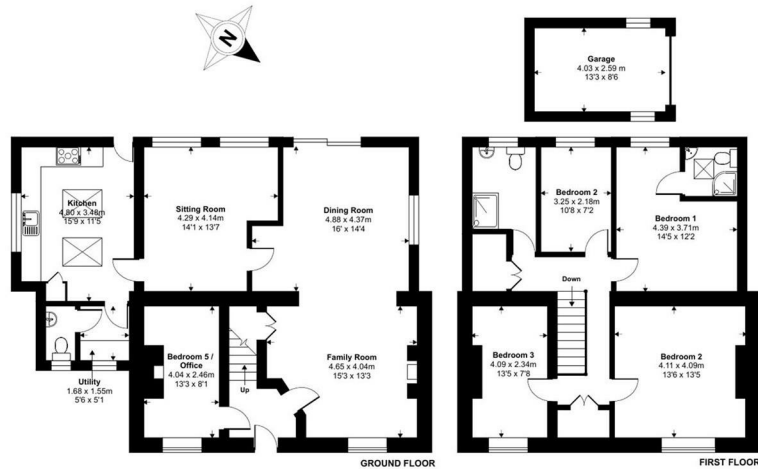
Mount Street, Bishops Lydeard, Taunton, TA4

Approximate Area = 1865 sq ft / 173.2 sq m

Garage = 113 sq ft / 10.4 sq m

Total = 1978 sq ft / 183.7 sq m

For identification only - Not to scale



Certified Property Measurer
 Floor plan produced in accordance with RICS Property Measurement Standards incorporating International Property Measurement Standards (IPMS2 Residential). © nichacorn 2024. Produced for Miles Alexander Limited T/A Miles Estate Agents. REF: 1174608



Viewings strictly through the selling agents:

Miles Estate Agents

2 Piffin Lane, Bishops Lydeard, Taunton, Somerset, TA4 3AS

Tel: 01823 470 500

lydeard@milesestateagents.co.uk

www.milesestateagents.co.uk



rightmove

onTheMarket.com

MILES ESTATE AGENTS

