



Legacy Building, Embassy Gardens, London

£900,000

A superb opportunity to acquire a beautifully maintained high-floor apartment within one of London's most iconic modern developments.

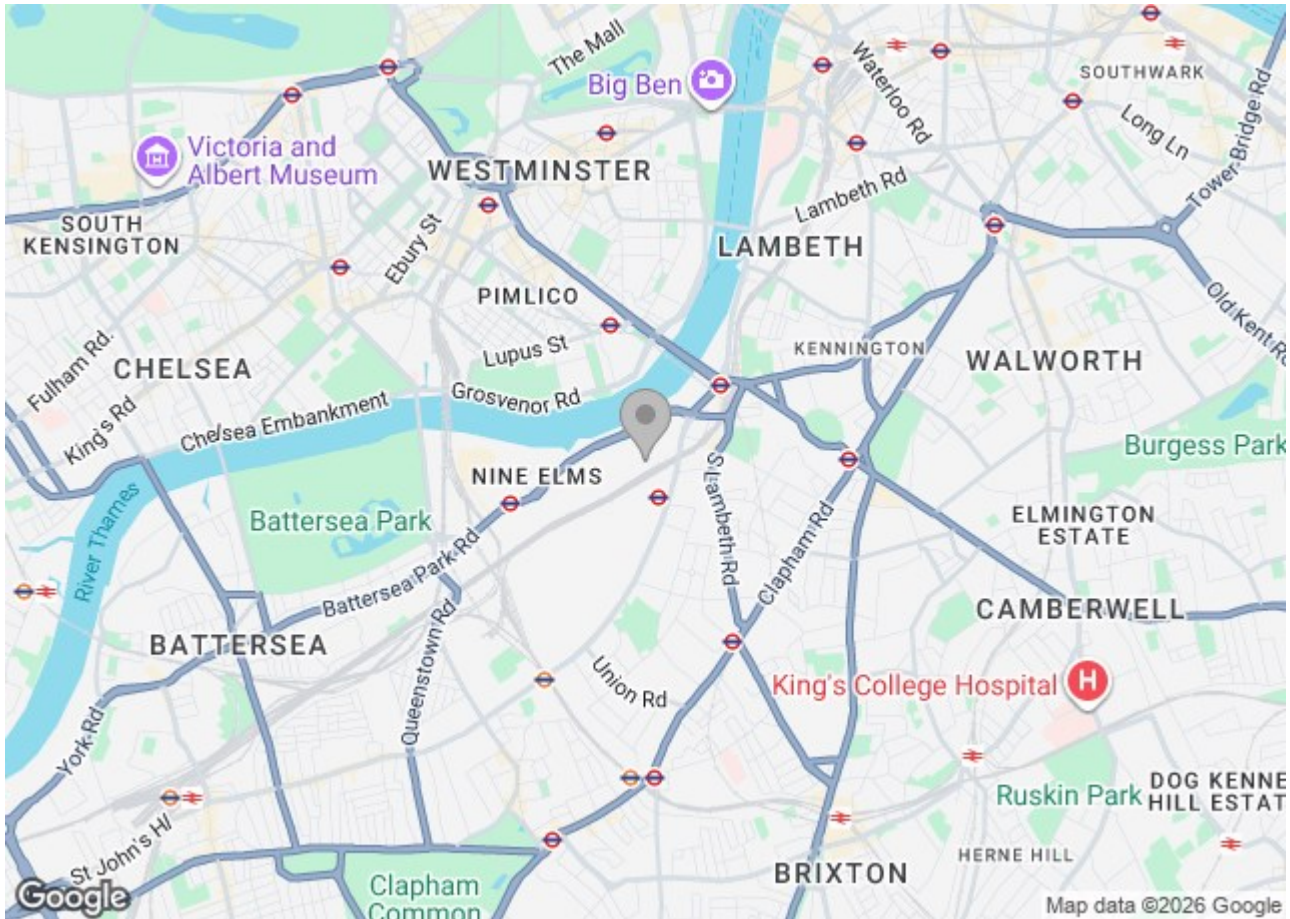
Situated within the prestigious Legacy Building, part of the sought-after Embassy Gardens development, this immaculate two-bedroom, two-bathroom apartment offers refined contemporary living in one of London's most vibrant riverside neighbourhoods.

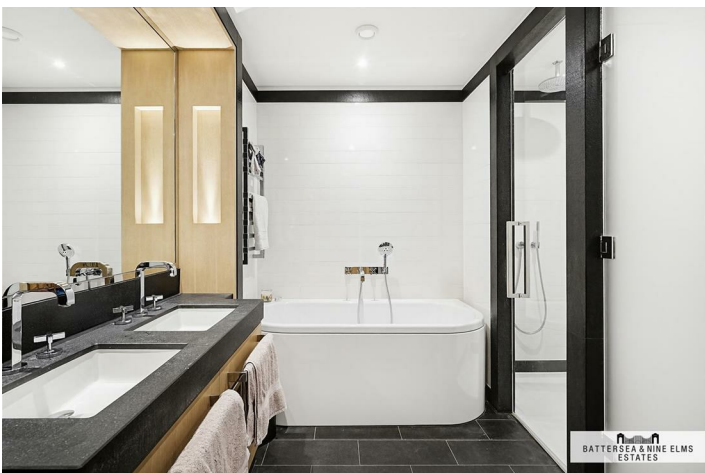
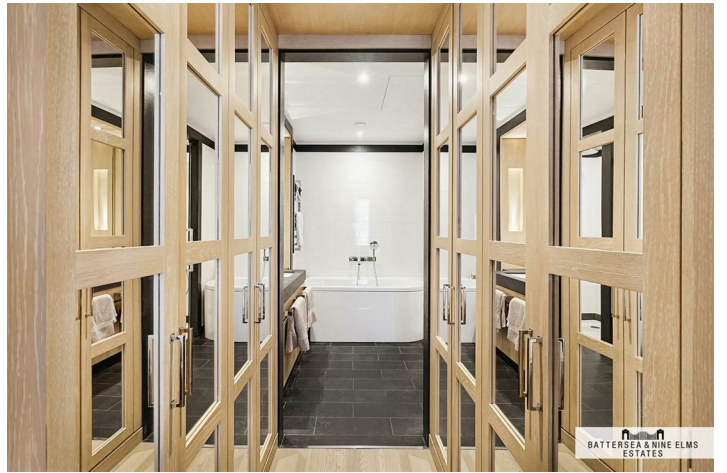
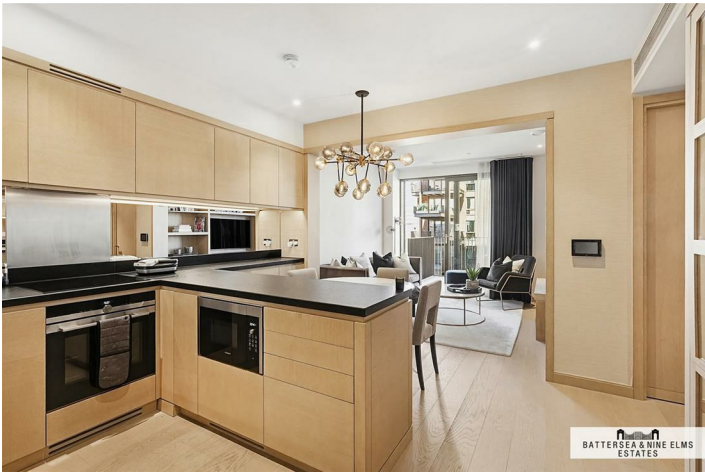
Finished to an exceptional standard throughout, the apartment features a bright and spacious open-plan living and dining area with floor-to-ceiling windows that flood the space with natural light and showcase impressive elevated views. The sleek modern kitchen is fully integrated with premium appliances and stylish cabinetry, creating a sophisticated yet highly functional living environment.

Both bedrooms are generously proportioned, with the principal suite benefiting from a luxurious en-suite bathroom and extensive built-in storage. A second beautifully appointed bathroom serves the guest bedroom and visitors alike. Presented in immaculate condition, the property is ready for immediate occupation and perfectly suited for owner-occupiers, pied-à-terre buyers, or investors seeking a prime London asset.

Residents of Embassy Gardens enjoy access to world-class amenities including a 24-hour concierge, residents' gym, swimming pool, spa facilities, private cinema, business lounge, and beautifully landscaped communal gardens. Ideally located moments from the River Thames and excellent transport connections via Nine Elms and Vauxhall, the development offers seamless access to Chelsea, Westminster, the City, and beyond.

Viaduct Gardens London

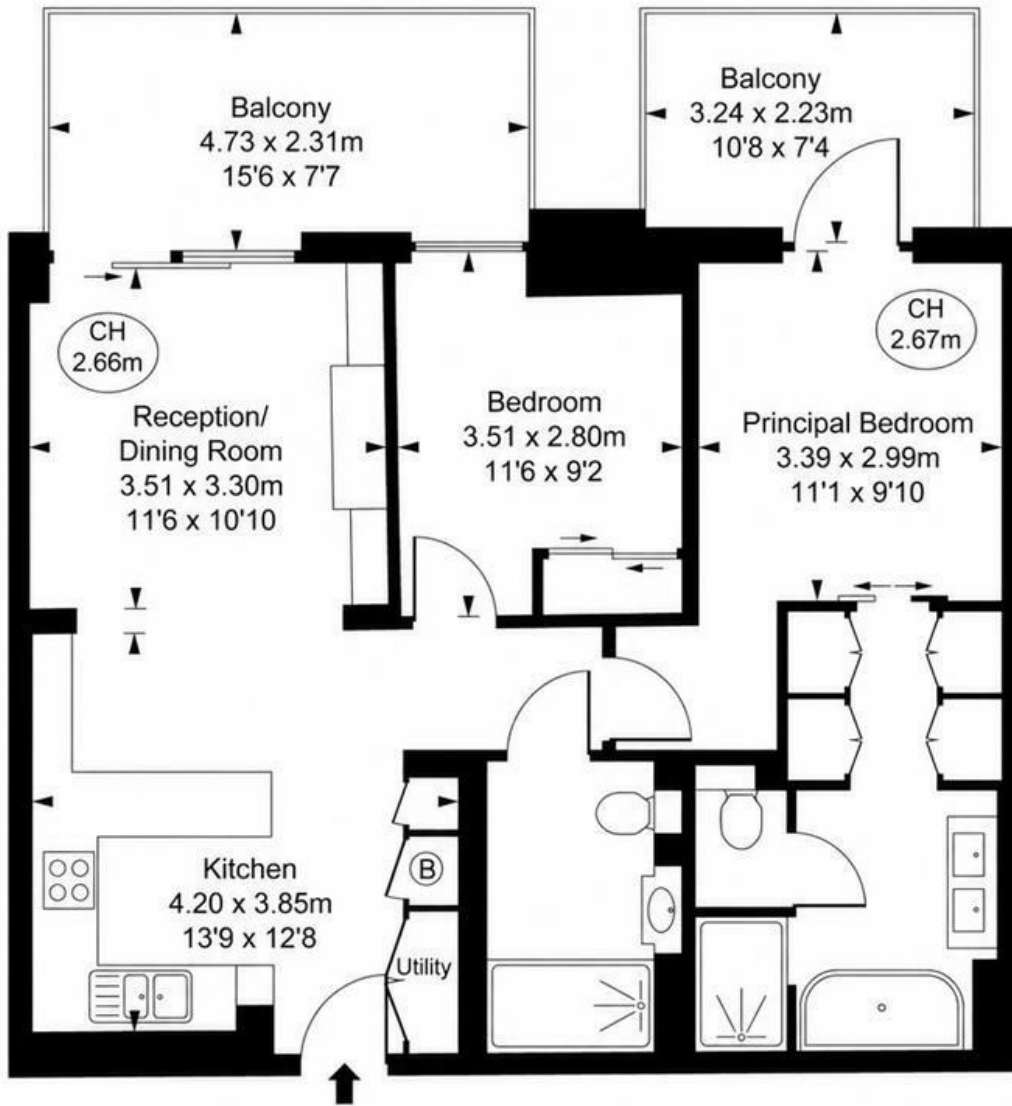




Legacy Building, Viaduct Gardens, SW11

Approximate Gross Internal Area
72.78 sq m / 783 sq ft

(CH = Ceiling Heights)



This plan is not to scale. It is for guidance and not for valuation purposes.
All measurements and areas are approximate only, and have been prepared in accordance with the current edition of the RICS Code of Measuring Practice.
© Fulham Performance

These particulars, whilst believed to be accurate are set out as a general outline only for guidance and do not constitute any part of an offer or contract. Intending purchasers should not rely on them as statements of representation of fact, but must satisfy themselves by inspection or otherwise as to their accuracy. No person in this firm's employment has the authority to make or give any representation or warranty in respect of the property.

Energy Efficiency Rating		Current	Potential	Environmental Impact (CO ₂) Rating		Current	Potential
Very energy efficient - lower running costs				Very environmentally friendly - lower CO ₂ emissions			
(92 plus) A				(81-91) A			
(81-91) B				(69-80) B			
(69-80) C				(55-68) C			
(55-68) D				(39-54) D			
(39-54) E				(21-38) E			
(21-38) F				(11-20) F			
(11-20) G				Not environmentally friendly - higher CO ₂ emissions			
Not energy efficient - higher running costs				Not environmentally friendly - higher CO ₂ emissions			
England & Wales	EU Directive 2002/91/EC			England & Wales	EU Directive 2002/91/EC		