



# Hargrave Park

London, N19

Asking Price £1,500,000

A well-presented and generously proportioned four bedroom family home arranged over three floors benefitting from a large private garden.

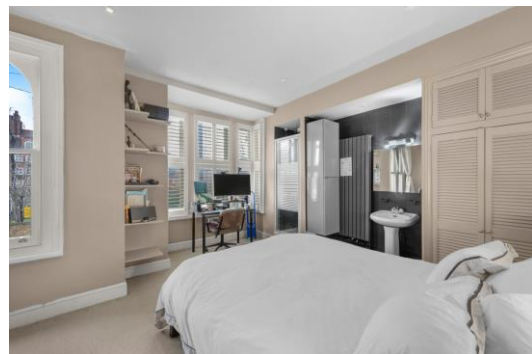
The ground floor features a welcoming entrance hall leading to a bright reception/dining room, ideal for living and entertaining. To the rear, there is a separate fitted kitchen providing direct access to the garden.

Upstairs, the first floor offers three well-proportioned bedrooms and a family bathroom, with the principal bedroom benefiting from an en-suite shower room. The second floor provides an additional spacious bedroom with useful eaves storage, making it ideal as an alternative main bedroom suite, guest room, or home office.

Further features include a large private rear garden, ample storage throughout and also the potential to extend at the rear and further into the loft, subject to the relevant planning permissions.

**CHESTERTONS**





# Hargrave Park

## London, N19

- Four Bedroom Family Home
- Excellent Location
- Large Private Garden
- Rear Patio
- Good Condition Throughout
- Potential To Extend (STPP)





Hargrave Park is located within easy reach of the amenities of Archway and Upper Holloway Road with a selection of parks, cafés, restaurants and supermarkets. Archway Underground Station (Northern Line) is within short walking distance of the property with Holloway Road Overground Station also within easy reach, offering fast and reliable services into central London.

---

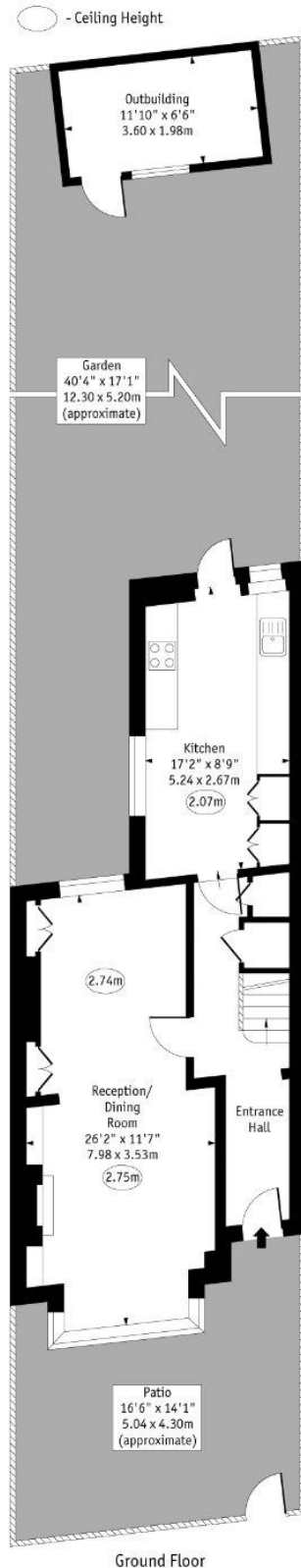
**Tenure:** Freehold  
**Service Charge:** NA  
**Ground Rent:** NA  
**Local Authority:** Islington  
**Council Tax Band:** F

---

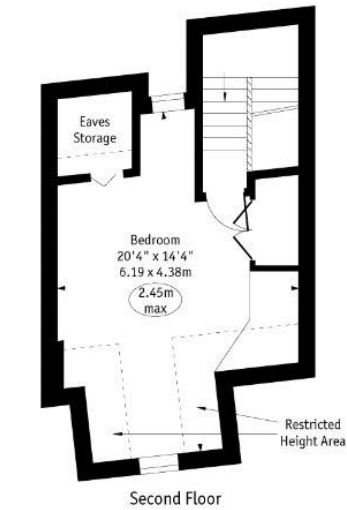
*Chestertons Camden & Kentish Town Sales*

99-101 Parkway  
Camden  
London  
NW1 7PP  
camden@chestertons.co.uk  
020 7267 2053  
chestertons.co.uk

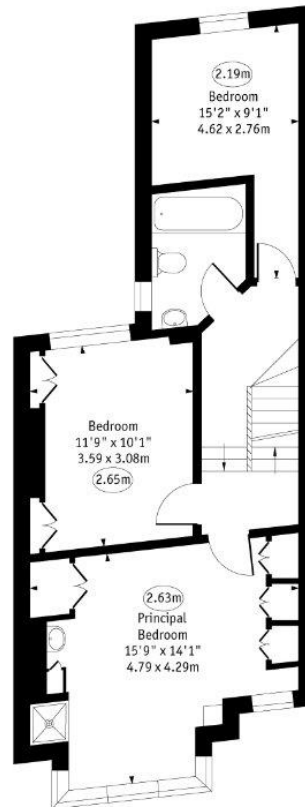
# Hargrave Park



Ground Floor



Second Floor



First Floor

Approx Gross Internal Area 1420 Sq Ft - 131.92 Sq M

Every attempt has been made to ensure the accuracy of the floor plan shown. However, all measurements, fixtures, fittings, and data shown are approximate interpretations and for illustrative purposes only. Measured according to the RICS. Not To Scale.

Ref. No. 030484JH

Chesterton UK Services Limited trading as Chestertons for themselves and for the vendor of this property whose agents they are, give notice that (i) these particulars do not constitute any part of an offer or contract, (ii) all statements contained within these particulars are made without responsibility on the part of Chestertons or the vendor, (iii) whilst made in good faith, none of the statements contained within these particulars are to be relied upon as a statement or representation of fact, (iv) any intending purchasers must satisfy themselves by inspection or otherwise as to the correctness of each of the statements contained within these particulars, (v) the vendor does not make or give either Chestertons or any person in their employment any authority to make or give representation or warranty whatsoever in relation to this property. Wide angle lenses may be used. ©Copyright Chestertons | Chesterton UK Services Limited | Registered Office 40 Connaught Street, Hyde Park, London W2 2AB Registered Company Number 05334580.



This paper is  
100% recyclable