



Luscombe Maye

Since 1873

Island Street, Salcombe

Guide Price £725,000

🛏 3 🚿 2 🚗 1



- Recently renovated throughout
- Three bedrooms
- Estuary views
- Short stroll into the town centre
- Permit parking nearby
- Immaculate interiors
- Two bathrooms
- Spacious open plan living
- Sought after location
- Family sized accommodation



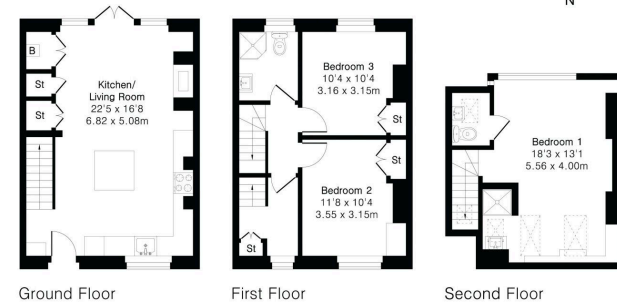


Approximate Gross Internal Area 1035 sq ft - 97 sq m

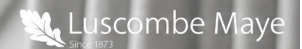
Ground Floor Area 373 sq ft – 35 sq m

First Floor Area 373 sq ft – 35 sq m

Second Floor Area 289 sq ft – 27 sq m



Floor plans produced in accordance with RICS Property Measurement 2nd Edition. Although Pink Plan Ltd assumes the highest level of accuracy, measurements of doors, windows and rooms are approximate and no responsibility is taken for error, omission or misstatement. These plans are for representation purposes only and no guarantee is given on the total square footage of the property within this plan. The figure seen is for initial guidance only and should not be relied on as a basis of valuation.



Salcombe:
 2 Island Square, Island Street, Salcombe TQ8 8DP
 01548 845090
salcombe@luscombemaye.com
www.luscombemaye.com

Important Notice: Luscombe Maye gives notice that: 1. These particulars do not constitute an offer or contract or part thereof. 2. All descriptions, photographs and plans are for guidance only and should not be relied upon as statements or representations of fact. All measurements are approximate and not necessarily to scale. Any prospective purchaser must satisfy themselves of the correctness of the information within the particulars by inspection or otherwise. 3. Luscombe Maye does not have any authority to give any representations or warranties whatsoever in relation to this property (including but not limited to planning/building regulations), nor can it enter into any contract on behalf of the Vendor.