



12 The Elms Feltham Hill Road, Ashford, TW15 2DH

£285,000

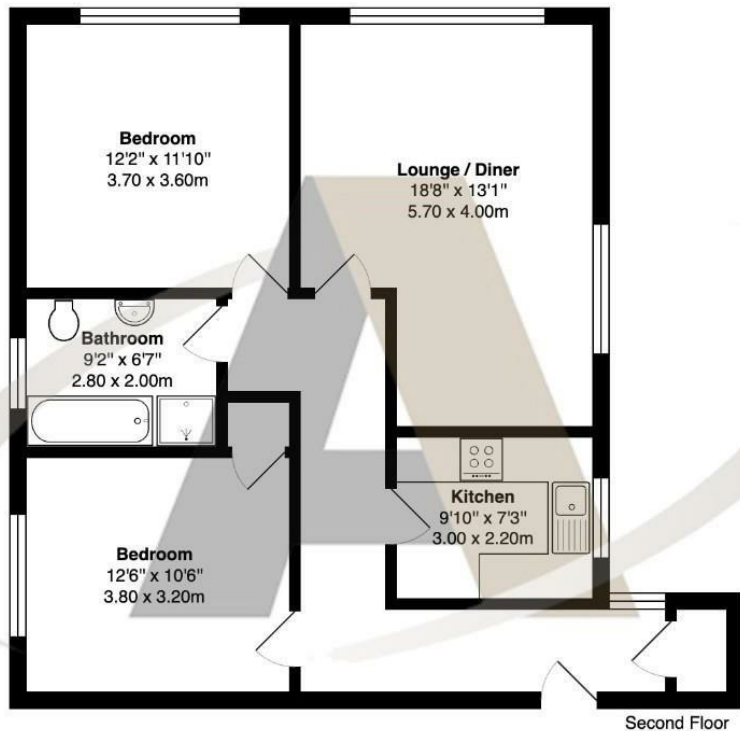
12 The Elms Feltham Hill Road, Ashford, TW15 2DH

NO ONWARD CHAIN! Aspen Estate Agents are delighted to present this lovely two-bedroom, second-floor apartment, ideally situated on Feltham Hill Road in Ashford. Located within easy walking distance of Ashford town centre and Ashford station, the property offers excellent access to a range of transport links, popular local schools, and everyday amenities, making it perfectly positioned for both commuters and families alike. Set within The Elms, a well-maintained development of purpose-built apartments, this home enjoys a pleasant residential setting with the convenience of everything close at hand.

The accommodation comprises two generous double bedrooms, a spacious lounge diner ideal for both relaxing and entertaining, a modern fitted kitchen, and a well-appointed four-piece bathroom suite. The property further benefits from an allocated parking space, adding to its practicality and appeal. With its excellent location and well-proportioned living space, this apartment would make an ideal purchase for first-time buyers looking to step onto the property ladder, as well as investors seeking a strong rental opportunity.



Floor Plan



The Elms, Feltham Hill Road, Ashford

Total Area: 786 ft² ... 73.0 m²

All measurements are approximate and for display purposes only



Features

- Two bedroom apartment
- Allocated parking
- Four piece bathroom
- Ideal for first-time buyers or investors
- Close to town centre
- Large lounge / diner
- Long lease
- Modern Kitchen
- Close to station
- No onward chain

Aspen Residential Services
77 Church Road, Ashford, Surrey, TW15 2PE
Tel: 01784 252 202
Email: enquiries@aspensalesandlettings.com



Tenure - Leasehold Council Tax Band - C

