



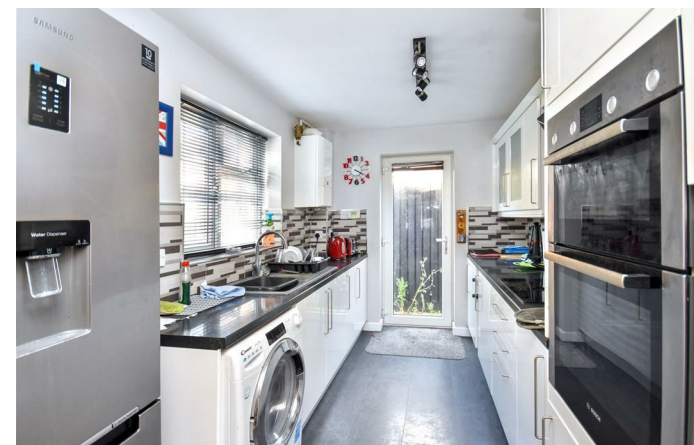
28 Applegarth Close

Corby, NN18 8EU



Simpson West

Occupying a pleasant position within the sought after Oakley Vale area is this fabulous three/four bedroom detached property features a stunning 14ft x 14ft family room which overlooks the landscaped rear garden. Situated in a cul-de-sac position and ideally located for nearby schools this property offers flexible living space for the young family. The immaculate living accommodation includes entrance hall, cloakroom, living room, bedroom four/home office, family room, kitchen, landing, three bedrooms and bathroom. Features include gas radiator central heating and double glazing. Outside to the front is a block paved driveway providing ample Off Road Parking and gated access to the fully landscaped low maintenance rear garden. Call now to arrange a viewing as interest is sure to be high!  
Energy Rating to be confirmed. Council Tax Band A.



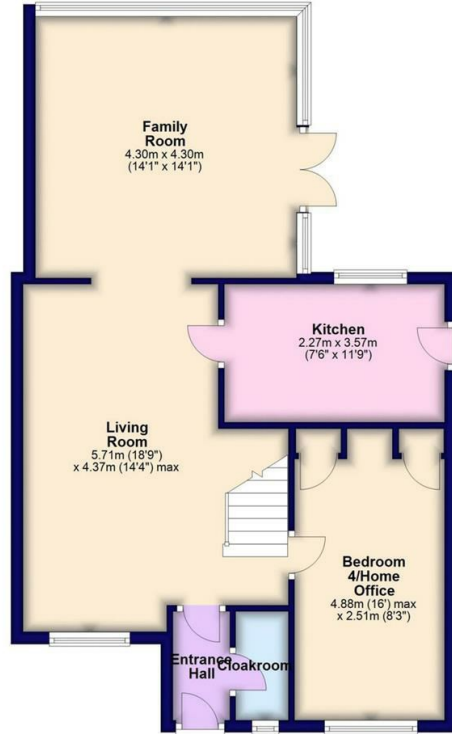
£285,000

4 1 2



### Ground Floor

Approx. 65.3 sq. metres (702.7 sq. feet)



### First Floor

Approx. 39.9 sq. metres (429.0 sq. feet)



Total area: approx. 105.1 sq. metres (1131.6 sq. feet)



### Energy Efficiency Rating

	Current	Potential
<i>Very energy efficient - lower running costs</i>		
(92 plus) <b>A</b>		
(81-91) <b>B</b>		
(69-80) <b>C</b>		
(55-68) <b>D</b>		
(39-54) <b>E</b>		
(21-38) <b>F</b>		
(1-20) <b>G</b>		
<i>Not energy efficient - higher running costs</i>		
<b>England &amp; Wales</b>	EU Directive 2002/91/EC	



When you buy with Simpson West, you know **you'll be in safe hands**. From the moment you walk through our doors, we'll make you **feel truly welcome**. Our sales consultants and financial advisors will take you through **every step of the process**, offering **free expert advice** along the way, from help choosing the right mortgage and insurance through to finding your conveyancer. And if you need help selling your home too, **with over 20 years of local experience, you can trust us to get you moving**.



**Simpson  
West**

Making Every  
Journey Personal



01536 202007

[info@simpsonwest.co.uk](mailto:info@simpsonwest.co.uk)

<https://www.simpsonwest.co.uk/>

64 Corporation Street, Corby, Northants, NN17 1NH