



## Shuttleworth Road, SW11

£1,900 Per calendar month

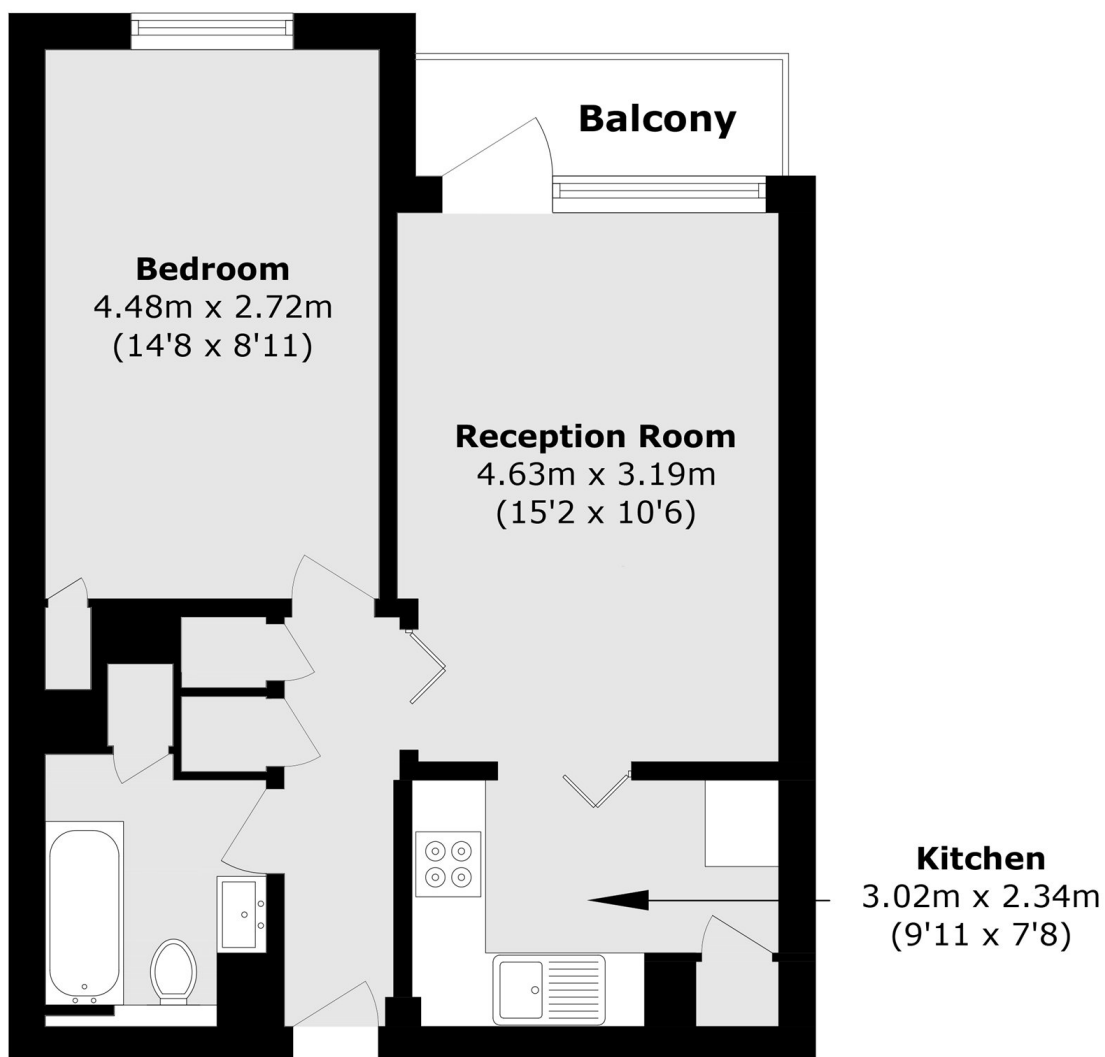
A bright and modern one-bedroom apartment located near the river. The property has an open living area with access to a west-facing balcony, a large bedroom with storage and a separate kitchen.

Meecham Court is located close to the river with Battersea Square just 0.2 Miles from the property. Battersea Park is also just half a mile away.

### Features

- One Double Bedroom
- Balcony
- Furnished
- West-Facing
- Storage
- Availability Flexible

Shuttleworth Road,  
London, SW11



Total area (approx.): 43.3 sq. m (466.0 sq. ft)

Balcony area (approx.): 3.0 sq. m (32.7 sq. ft)

**Dexters**

Battersea  
174A Lavender Hill  
London  
SW11 5TG  
Lettings  
020 7350 1300

Energy Rating: C. We aim to make our particulars both accurate and reliable. However they are not guaranteed; nor do they form part of an offer or contract. If you require clarification on any points then please contact us, especially if you're traveling some distance to view. Please note that appliances and heating systems have not been tested and therefore no warranties can be given as to their good working order.

 **RICS** | Regulated  
Estate Agent  
and Letting Agent

[dexters.co.uk](http://dexters.co.uk)