



7 Sutton Drive, Chester
£390,000





7 Sutton Drive

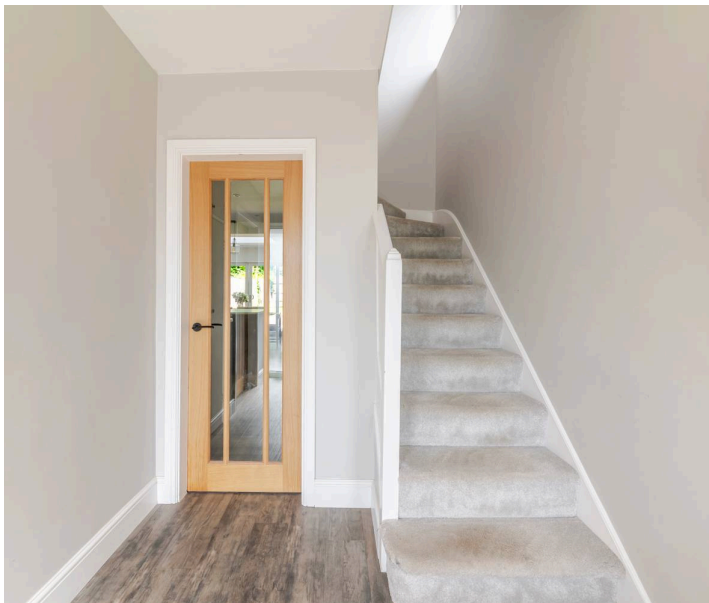
Chester

Situated on the ever-popular Sutton Drive, between Newton and Upton, this beautifully improved three-bedroom semi-detached home offers stylish, ready-to-move-into accommodation in an exceptionally convenient location.

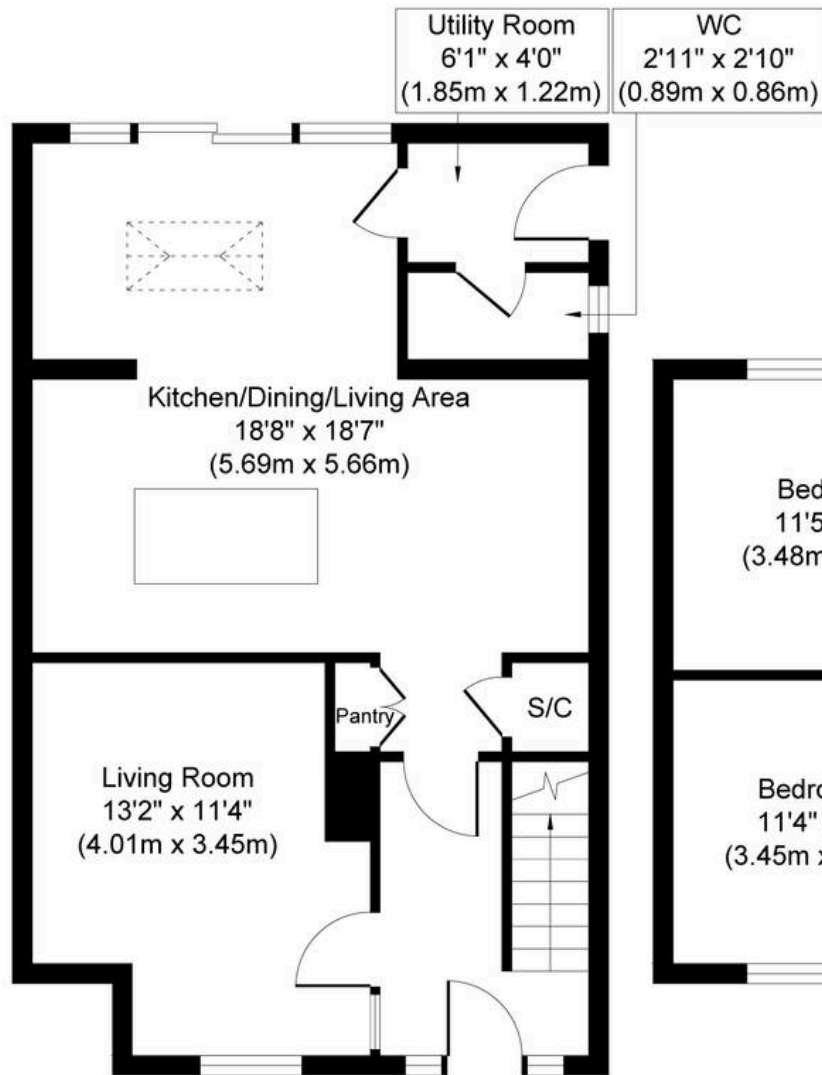
Council Tax band: C

Tenure: Freehold

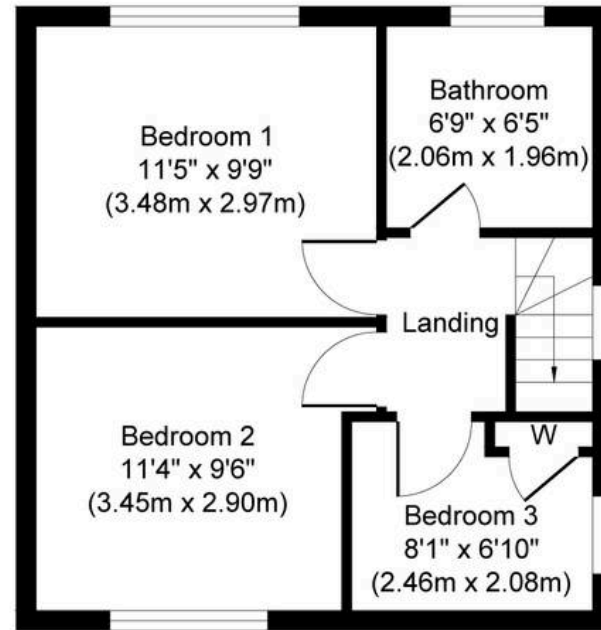
- Completely refurbished and extended semi detached home with a large and private rear garden
- Stunning open plan over 18ft x 18ft living/dining kitchen with patio doors onto the rear patio, large central island with ceiling lantern proving further natural light
- Separate bay fronted cosy front sitting room with a feature fireplace
- Ground floor cloakroom/w/c and useful utility room
- Three first floor bedrooms all with pleasant outlooks, stylishly appointed bathroom with a sleek white suite
- Attractively approached by a newly tarmacadam driveway with parking to the front and side leading to a single detached garage
- Ideal family sized rear garden with two large patio/seating area's







Ground Floor
Approximate Floor Area
560 sq. ft
(52.06 sq. m)



First Floor
Approximate Floor Area
365 sq. ft
(33.96 sq. m)

Whilst every attempt has been made to ensure the accuracy of the floor plan contained here, measurements of doors, windows, rooms and any other items are approximate and no responsibility is taken for any error, omission, or mis-statement. The measurements should not be relied upon for valuation, transaction and/or funding purposes. This plan is for illustrative purposes only and should be used as such by any prospective purchaser or tenant. The services, systems and appliances shown have not been tested and no guarantee as to their operability or efficiency can be given.



Currans Homes Sales

Currans Homes, 11 Grosvenor Street - CHI 2DD

01244 313900 • sales@curranshomes.co.uk • curranshomes.co.uk/