



St Quintin Avenue, North Kensington W10

£975,000



## St Quintin Avenue

North Kensington W10

Beautifully designed and decorated 2 bedroom raised ground floor flat close to local parks and underground stations.

Well-located flat with tasteful interiors on a tree lined street in North Kensington W10.

Stepping into the flat on the raised ground floor, the entrance hall leads into an impressive reception room. The open-plan kitchen with modern fitted units flows through to a living space consisting of dining and seating areas. High ceilings, full-length bay windows and a stunning wooden floor, showcase the attention to detail, while an ornate cornice and plaster mouldings create an impression of elegance.

The flat has been decorated in a smart fashion that mixes classic style with modern convenience.

The 2 bedrooms are situated overlooking the gardens at the back with built in wardrobes, and there is an extremely smart shower room.



# St Quintin Avenue

North Kensington W10

The flat is conveniently located for Latimer Road and Ladbroke Grove (Hammersmith & City line) underground stations. St Quintin Avenue is a popular residential street in North Kensington, moment's walk to Kensington Memorial Park with its cafe and tennis courts and only a short walk from the world famous Portobello Road, providing an excellent selection of cafes and shops. Westfield shopping mall and the recently developed Television Centre and new Soho House Club on the site of the iconic BBC Centre are also a walking distance. Sporting facilities include the Westway Sports Centre's five-a-side football pitches, tennis courts, impressive bouldering walls and gym. Within close proximity are two friendly neighbourhood parks - Little Wormwood Scrubs Park (0.5 miles) and Kensington Memorial Park (0.2 miles).

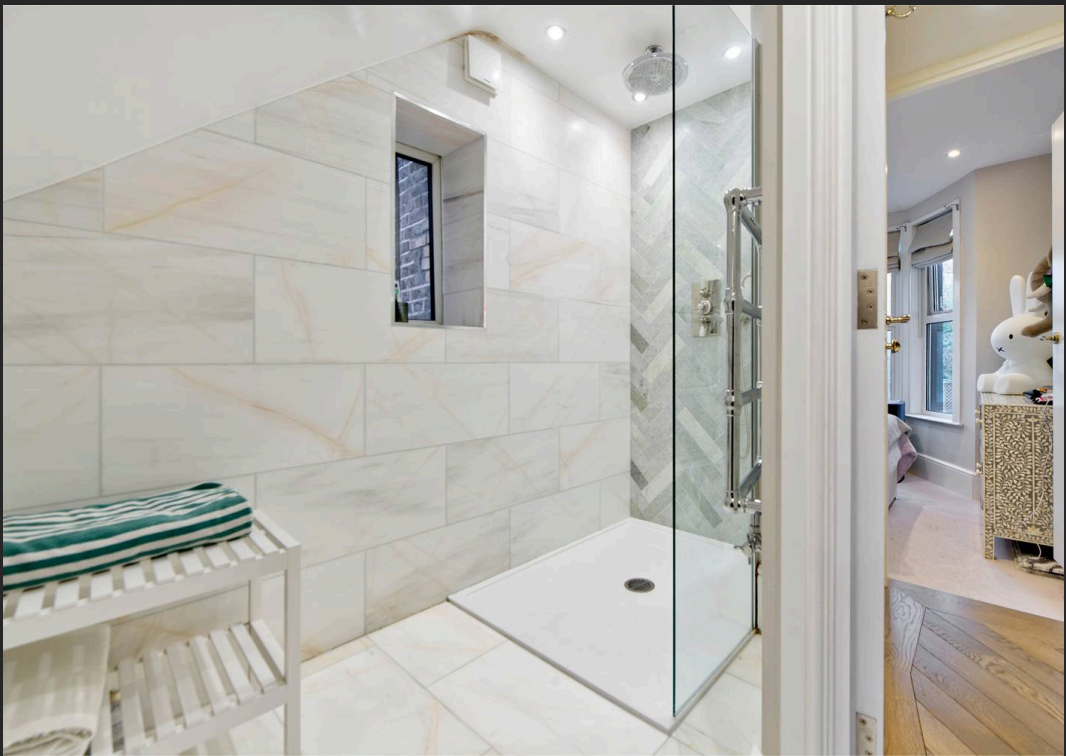
Council Tax band: F

Tenure: Leasehold

- Newly refurbished
- 2 bedrooms
- High ceilings
- Stunning reception room



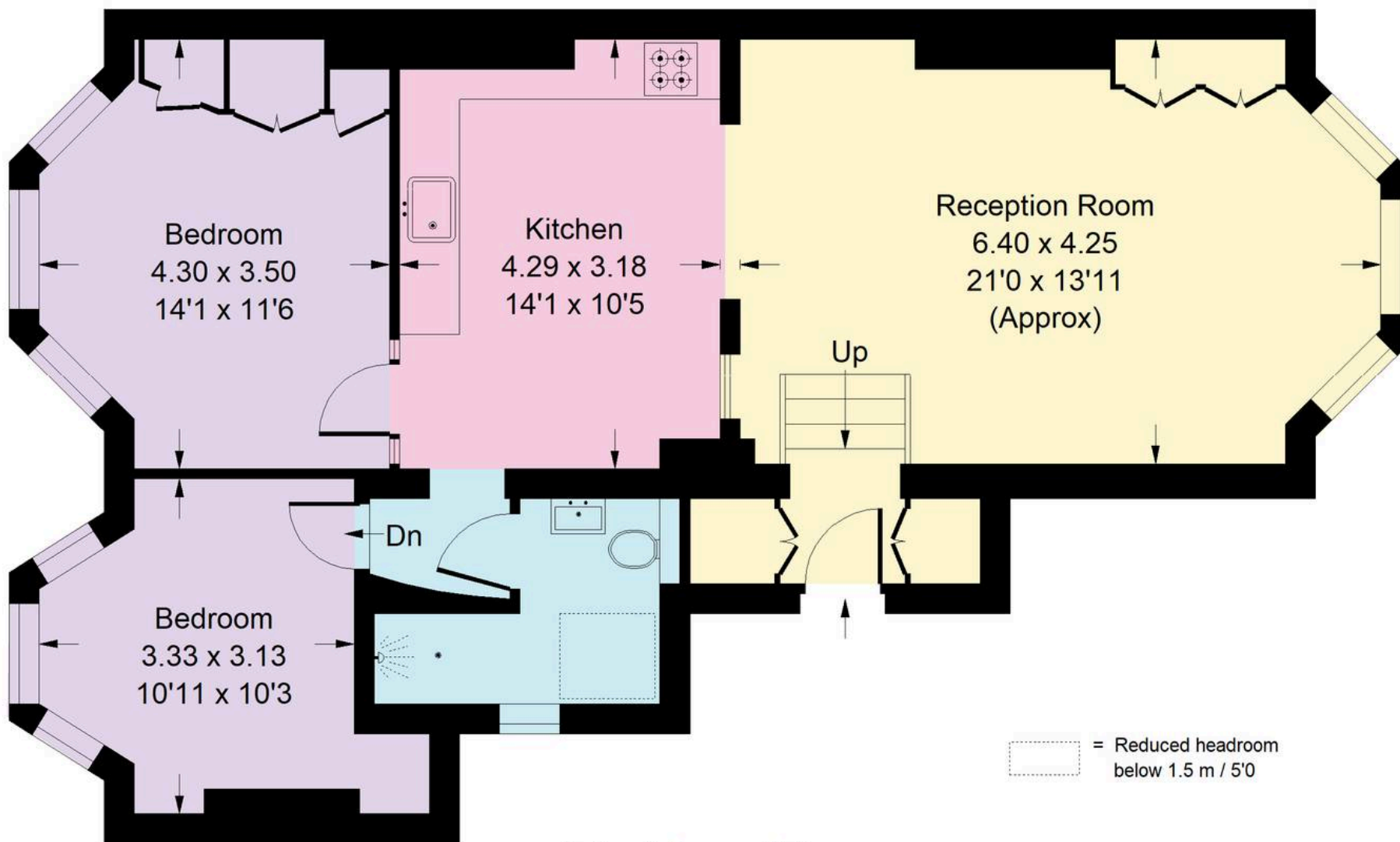
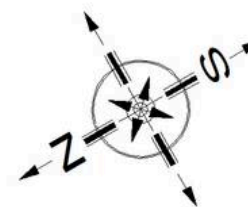






# St. Quinton Avenue, W10

Approx Gross Internal Area  
76 sq m / 818 sq ft



## Raised Ground Floor

Whilst every attempt has been made to ensure the accuracy of the floor plan, measurements are approximate and not to scale.  
No guarantee is given on the total square footage of the property quoted on the plan. Figures given are for guidance.  
Plan is for illustration purposes only, not to be used for valuations.





## Rigby & Marchant

115 Westbourne Studios 242 Acklam Road, London - W10 5JJ

020 7221 7210

[sales@rigbyandmarchant.co.uk](mailto:sales@rigbyandmarchant.co.uk)

[www.rigbyandmarchant.co.uk/](http://www.rigbyandmarchant.co.uk/)

R&M