

Penn Court

West Kensington, London, W14





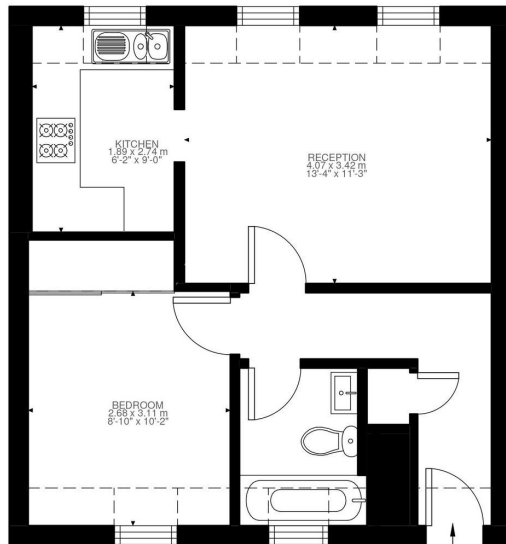
Penn Court

West Kensington, London, W14

Price Guide: £399,950



A bright and well presented, one bedroom top floor apartment set within the secure and well maintained Penn Court, ideally positioned on North End Road, W14. The property is offered in good condition throughout and provides well balanced accommodation, comprising a spacious reception room, a well appointed kitchen, a generous double bedroom and a bathroom. Situated on the top floor, the apartment enjoys an abundance of natural light and a peaceful setting away from the road below. Penn Court benefits from a gated entrance, providing residents with added security and privacy, while its prime location places an array of local amenities right on the doorstep. North End Road offers a vibrant selection of shops, cafés, restaurants and supermarkets, with the popular attractions of West Kensington, Fulham and Kensington all within easy reach. A major benefit of the location is its proximity to the newly transformed Olympia development, one of West London's most exciting regeneration projects. The £1.3 billion redevelopment is bringing new theatres, live music venues, hotels, restaurants, bars and cultural spaces to the area, further enhancing the appeal and long-term investment potential of this sought-after pocket of W14.



Third Floor
443 ft²

North End Road, W14
Approximate Gross Internal Area
41.12 SQ.M / 443 SQ.FT
KEY: CH = Ceiling Height
[Restricted Head Height]

Illustration for identification purposes only. Not to scale.
Floor Plan Drawn According To RICS Guidelines.

No chain | Top floor gated apartment | Well maintained purpose-built block | One bedroom
On the doorstep of the landmark Olympia regeneration project
Moments from local shops, cafés and restaurants
Leasehold | 443 Sq. Ft (41.12 Sq. M)

All viewings by appointment through our **West Kensington Office:**

T: 020 7385 5020
E: westken@lawsonrutter.com

1 Barons Court Road, London
W14 9DP
www.lawsonrutter.com

In accordance with the Property Misdescription Act 1991, we wish to emphasise that the information given in these particulars is intended to help you decide whether you wish to view this property. Whilst every care is taken to ensure the accuracy of these particulars please note that all measurements are approximate and we are, for the accuracy of other information, reliant on what the seller has provided. We strongly recommend that you rely on your own inspections and those of your advisors to establish the details of any aspects which are of particular importance. Please note that we have not undertaken any survey of the property or the appliances within it and the buyer must rely on their own investigations prior to exchange of contracts.

