

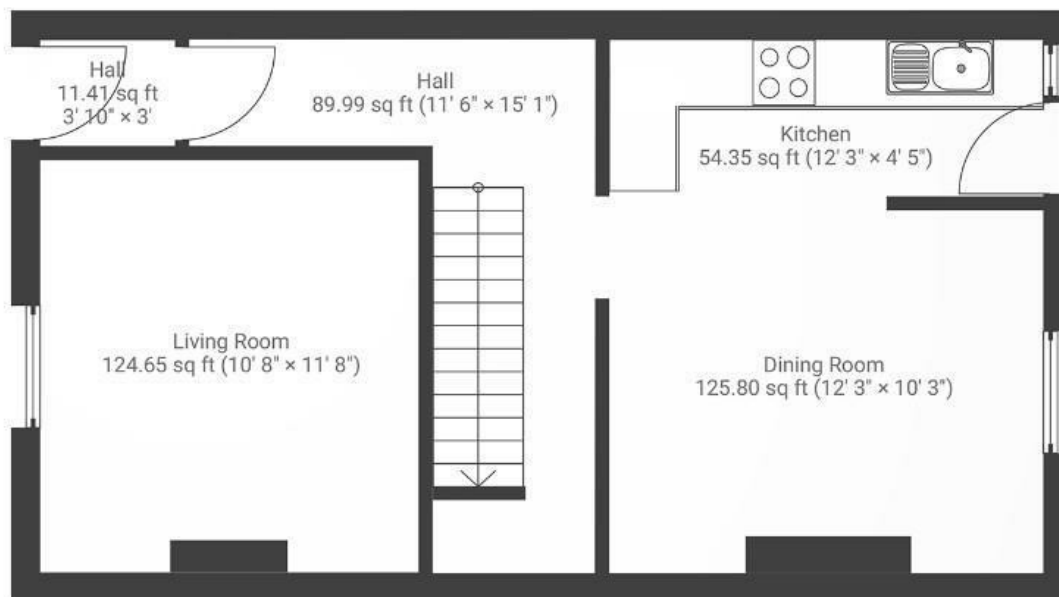
# Southey Street

## ST. WERBURGH'S

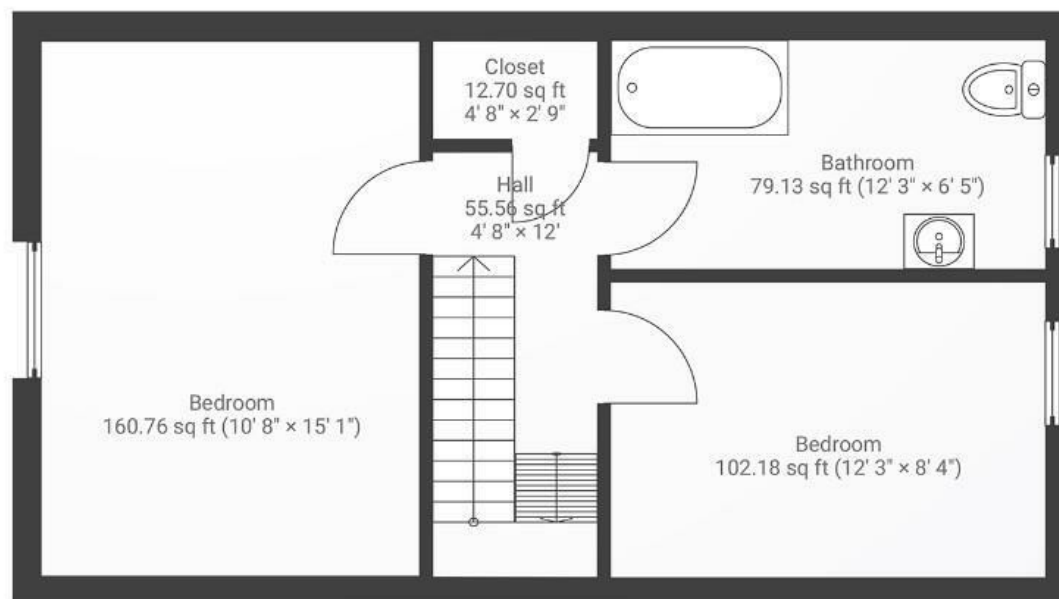
APPROXIMATE FLOOR AREA  
76 SQM / 816 SQFT



### GROUND FLOOR



### FIRST FLOOR



**Boardwalk**

# Southey Street , BRISTOL

£

£425,000

zzz

2 Bedrooms



BS2 9RE



1 Bathrooms

*"I was looking for a quiet cosy house, but still close to the action, and this one ticked all the boxes. There are so many great pubs, cafes and restaurants within walking distance; Bianchis on Picton St is a particular favourite. There are many green spaces nearby, but the garden is a lovely peaceful space to relax and dine alfresco on the raised decking."*

