



Napier Road, Gillingham ME7 4HG

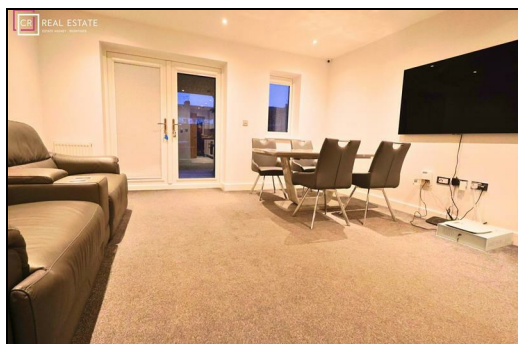
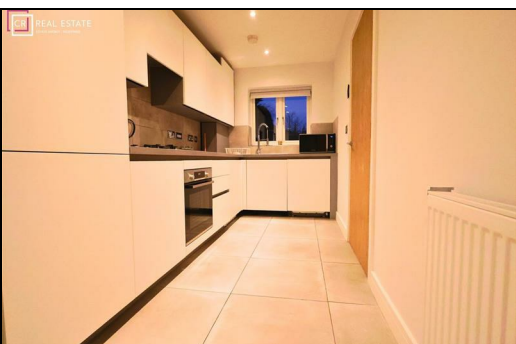
£2,200 Per Calendar Month


Company let only. A high-specification and beautifully presented three-bedroom property arranged over three floors positioned in a private road and built in 2021. Furnished to an excellent standard with high-quality, modern furniture throughout. Finished in neutral tones, the property provides a bright and stylish living environment ideal for professional company accommodation. The ground floor offers a spacious lounge/diner with excellent natural light, a sleek and fully equipped contemporary kitchen with integrated appliances, and a convenient cloakroom. The first floor comprises two well-proportioned bedrooms and a modern family bathroom. Occupying the top floor is an impressive master bedroom suite, complete with a stylish en-suite shower room, creating a private and peaceful retreat. Externally, the property benefits from three allocated parking spaces to the front and a private rear garden. This modern home is fully furnished and ready for immediate occupation by corporate tenants.


CR Real Estate are part The Ombudsman Redress Scheme and are a member of the Propertymark Client Money Protection Scheme. Tenant deposits are protected by the Tenancy Deposit Scheme. For more information, please contact us.

Client Money Protection is provided by: Client Money Protect. Scheme Ref: CMP004209

Independent redress is provided by: The Property Ombudsman (TPO). Membership Number: E01687



Energy Efficiency Rating		
	Current	Potential
Very energy efficient - lower running costs		
(92 plus) A		
(81-91) B		
(69-80) C		
(55-68) D		
(39-54) E		
(21-38) F		
(1-20) G		
Not energy efficient - higher running costs		
England & Wales	EU Directive 2002/91/EC	

Environmental Impact (CO ₂) Rating		
	Current	Potential
Very environmentally friendly - lower CO2 emissions		
(92 plus) A		
(81-91) B		
(69-80) C		
(55-68) D		
(39-54) E		
(21-38) F		
(1-20) G		
Not environmentally friendly - higher CO2 emissions		
England & Wales	EU Directive 2002/91/EC	



ESTATE AGENCY : REDEFINED

