



Westbourne Crescent, W2

£850,000

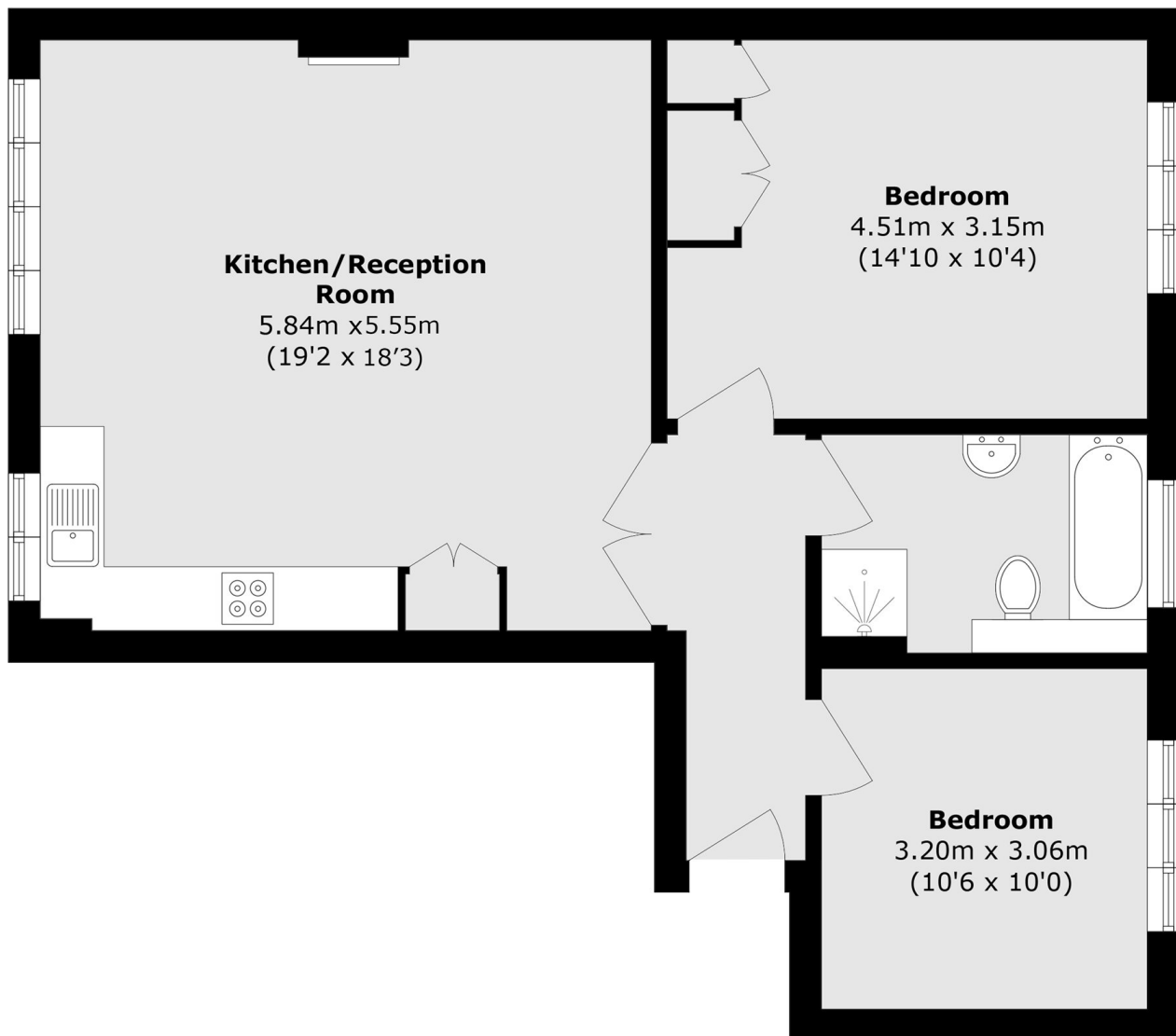
A two double bedroom, top floor (with lift) apartment in a white stucco fronted Victorian conversion. The property has a spacious open-plan reception with room to dine, wooden flooring and a feature fireplace. There are built-in wardrobes in the principal bedroom and the property has plenty of natural light throughout.

The property is situated on an attractive residential street, close to Hyde Park and the many transport links and amenities of Paddington.

Features

- Wooden Flooring
- Feature Fireplace
- Lift
- Two Double Bedroom
- Victorian Conversion
- Hyde Park Location

Westbourne Crescent, London, W2



Total area (approx.): 71.3 sq. m (767.4 sq. ft)