



Pine Grove, Windlesham

£1,150,000



Pine Grove, Windlesham, Surrey GU20 6AW

This substantial period home is located in a desirable private road in Windlesham which overlooks woodland and benefits from a large garden with impressive 610 sq ft log cabin.

FEATURES

- Walking distance to village shops
- Feature fireplaces
- Bay windows
- Overlooking woodland
- Electric car charger
- Large outbuilding
- Permission granted in 2020 for front extension

ACCOMMODATION

- Entrance porch
- Hallway
- Downstairs cloakroom
- Four reception rooms
- Kitchen/Breakfast room
- Utility room
- Four bedrooms
- Two bathrooms

OUTSIDE

- Driveway
- Garage (partly converted)
- Large east facing private rear garden
- Log cabin with hot tub room

EPC RATING

D

LOCAL AUTHORITY/COUNCIL TAX

Surrey Heath – Band F





Pine Grove

Approximate Gross Internal Area = 222.5 sq m / 2395 sq ft
 Outbuilding = 56.7 sq m / 610 sq ft
 Total = 279.2 sq m / 3005 sq ft

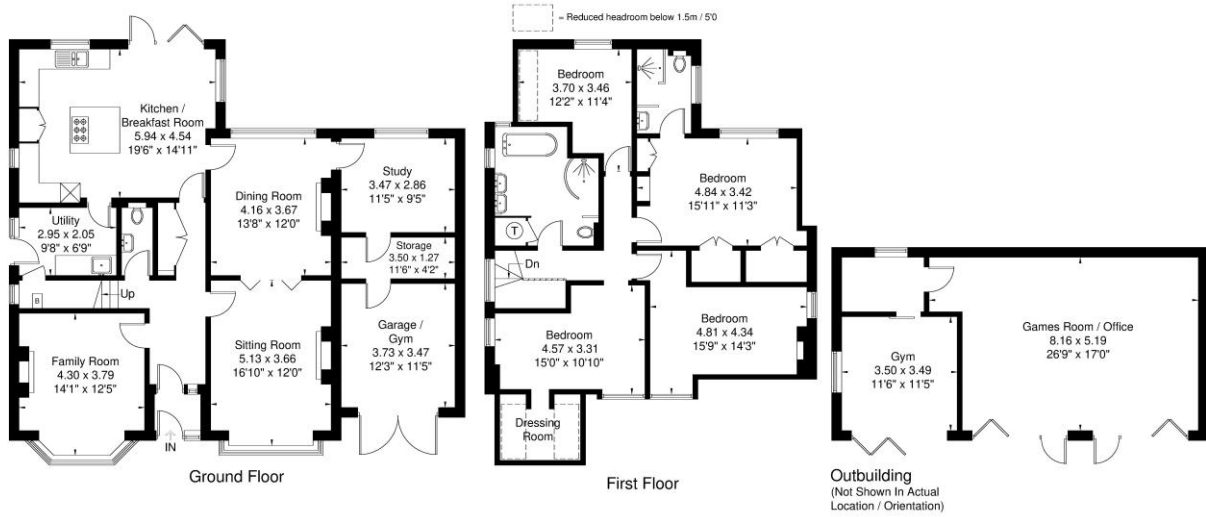


Illustration for identification purposes only,
 measurements are approximate, not to scale.

Disclaimer: We wish to inform prospective purchasers that we have prepared these sales particulars as a general guide. We have not carried out a detailed survey, nor tested the services, appliances and specific fittings. Room sizes are approximate and rounded: they are taken between internal wall surfaces and therefore include cupboards / shelves, etc. Accordingly, they should not be relied upon for carpeting, curtains / blinds and kitchen equipment, whether fitted or not, are deemed removable by the vendor unless specifically itemized within these.



The Old Dairy, 7 Updown Hill, Windlesham, Surrey GU20 6AF
 enquiries@newtonrowe.co.uk | 01276 986900