



Mare Street, E8

£750 Per week

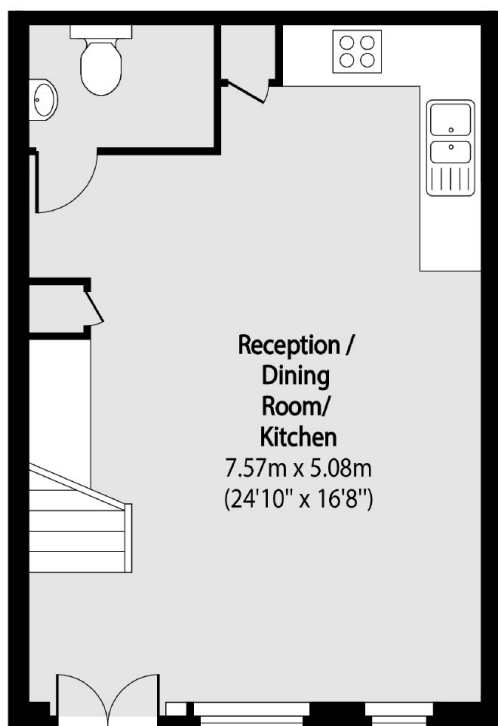
Cyntra Place is a converted clock factory, with a collection of modern apartments set within a gated mews. This unique warehouse style property has a large open plan living area, with exposed brickwork and hardwood floors throughout.

In one of East London's most vibrant corners with Broadway Market, London Fields and Victoria Park all less than half a mile away and London Fields overground station close by.

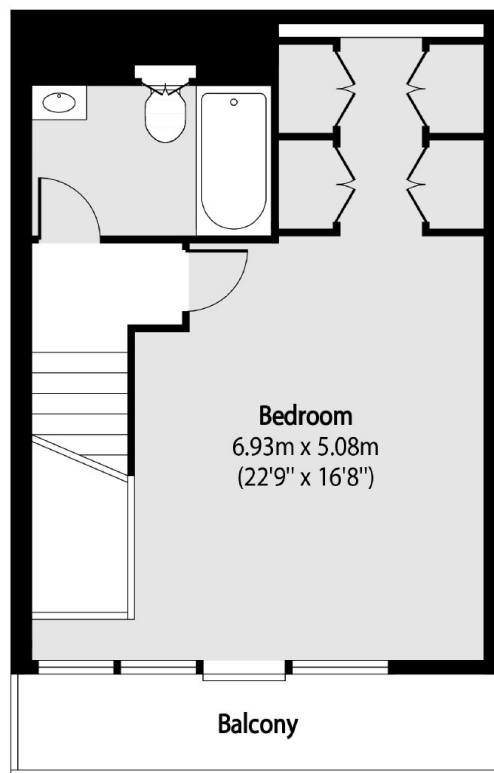
Features

- One Double Bedroom
- Converted Clock Factory
- Gated Mews
- Exposed Brickwork
- Duplex
- Balcony

Mare Street,
London, E8



First Floor



Second Floor

Total area (approx): 71.90 sq m (774 sq. ft)

Balcony total area (approx): 5.66 sq m (61 sq. ft)