



CHATTERTON | REES



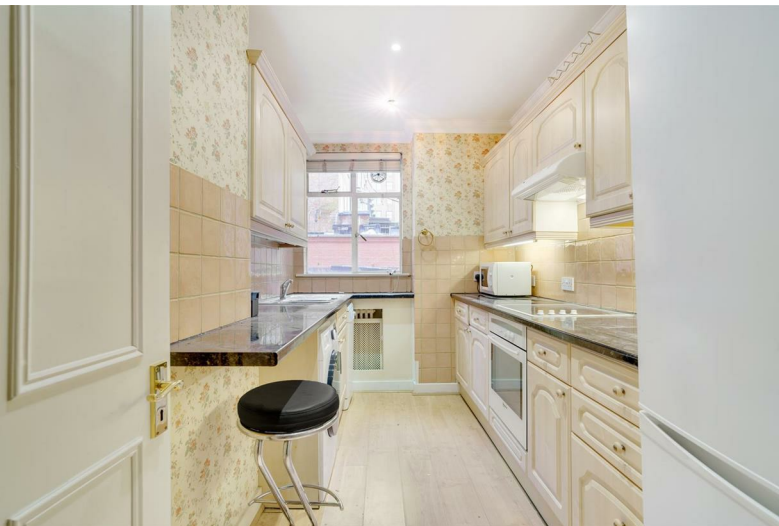
Kingston House South Ennismore Gardens

, London, SW7 1NF

£2,700



Kingston House South Ennismore Gardens



Description

Available immediately.

Located in the heart of South Kensington on the beautiful Ennismore Gardens, a wonderful 1 bedroom, 1 bathroom apartment with a large terrace.

The property is in Kingston House, a portered block on the Garden Square.

Ennismore Gardens is located with excellent transport links near by and just over the road from Hyde Park.

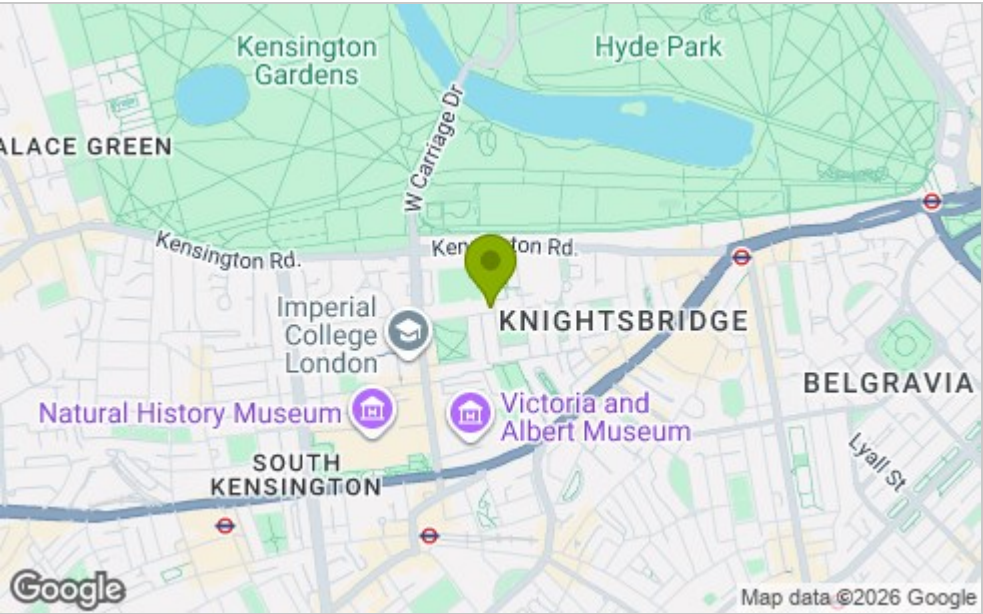




Floor Plan



Area Map



Viewing

Please contact our Chatterton Rees Office on 020 3780 0580 if you wish to arrange a viewing appointment for this property or require further information.

These particulars, whilst believed to be accurate are set out as a general outline only for guidance and do not constitute any part of an offer or contract. Intending purchasers should not rely on them as statements of representation of fact, but must satisfy themselves by inspection or otherwise as to their accuracy. No person in this firms employment has the authority to make or give any representation or warranty in respect of the property.

Energy Efficiency Graph

