



Lynton Road, W3

£425,000

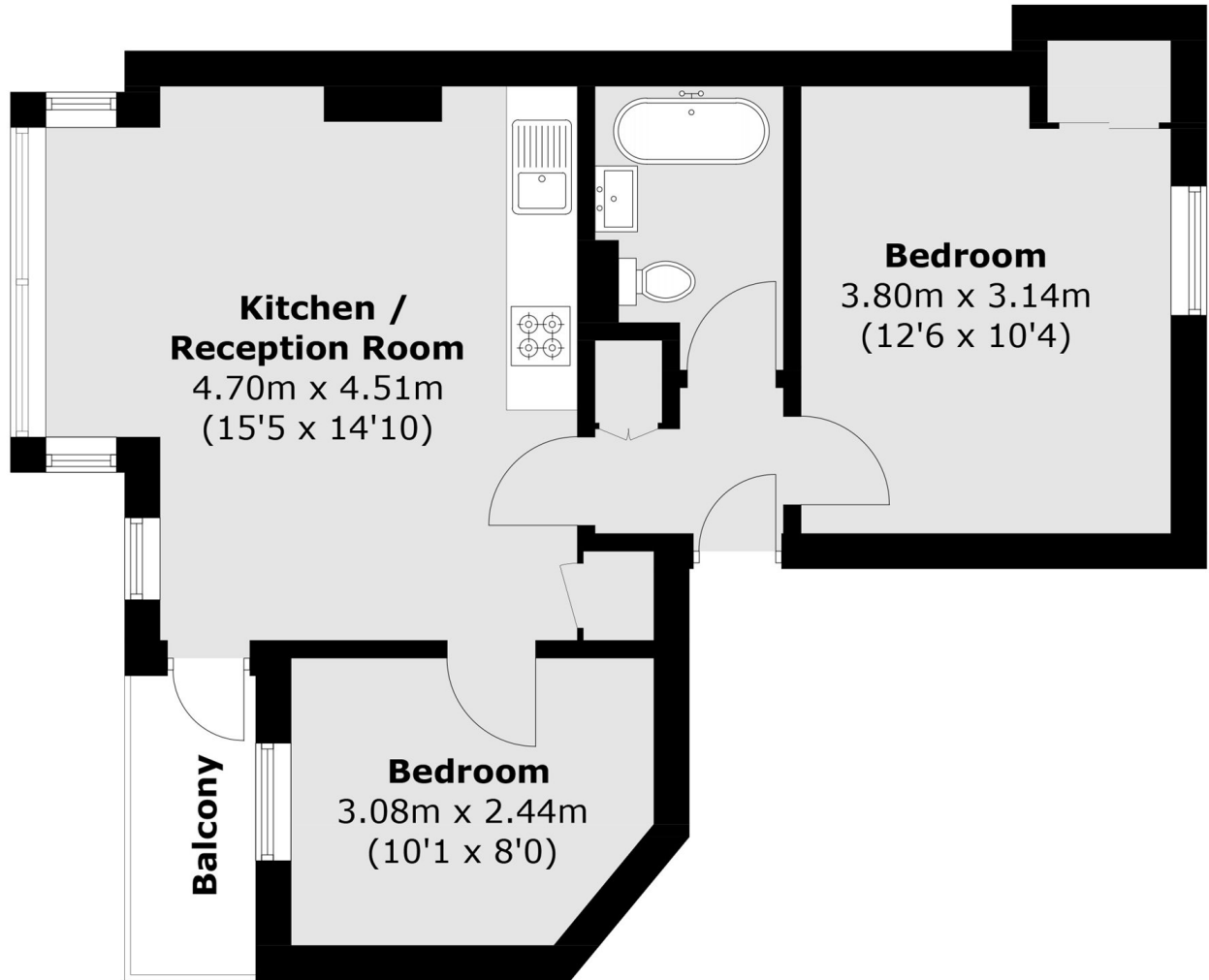
A well-presented two-bedroom conversion flat situated on the first floor of this imposing Edwardian building, ideally located within walking distance of amenities and tube links. The property benefits from excellent natural light offering two bedrooms and an open-plan reception room leading to a private south facing balcony. The property has been recently renovated throughout and is offered for sale with no onward chain.

Lynton Road is located on a quiet tree lined street and is situated in the heart of West Acton, there is good access to West Acton Station (Central Line) 0.4 miles away. Acton Main Line Station (Elizabeth Line) 0.5 miles away along with Ealing Common Station (Piccadilly/District Lines) 0.5 miles away.

Features

- Two Bedrooms
- Edwardian
- South facing balcony
- Recently Renovated
- Elizabeth Line
- No Onward Chain

Lynton Road,
Acton, W3



First Floor

Total area (approx.): 47.1 sq. m (507.0 sq. ft)

Balcony : 2.7 sq. m (29.1 sq. ft)

Dexters

Acton
171 High Street
London
W3 6LP

Sales
020 8896 2112

Energy Rating: D. We aim to make our particulars both accurate and reliable. However they are not guaranteed; nor do they form part of an offer or contract. If you require clarification on any points then please contact us, especially if you're traveling some distance to view. Please note that appliances and heating systems have not been tested and therefore no warranties can be given as to their good working order.

 **RICS** | Regulated
Estate Agent
and Letting Agent

dexters.co.uk