

# clever



## 106 Glendower Road

Peverell, Plymouth, PL3 4LD

**£230,000**

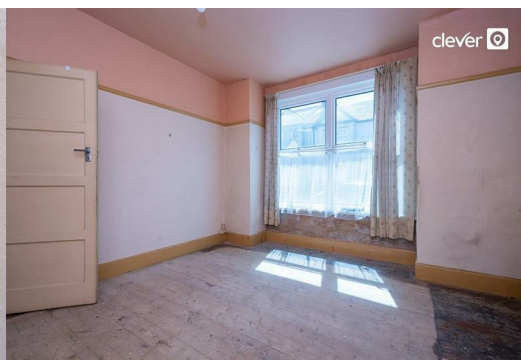


Located in the salubrious area of Peverell, Glendower Road presents an excellent opportunity for those seeking a charming mid-terrace house with stacks of potential. This delightful property boasts two spacious reception rooms, perfect for both relaxation and entertaining. With two well-proportioned bedrooms, it offers ample space for a small family or professionals looking for a comfortable home.

The property features a well-appointed bathroom, ensuring convenience for daily living. Its generous layout provides a sense of openness, making it an ideal canvas for personalisation and improvement. The location is particularly appealing, as it is situated within a great school catchment area, making it an excellent choice for families prioritising education.

Moreover, residents will appreciate the short walk to Central Park, a lovely green space perfect for leisurely strolls, picnics, or outdoor activities. This property not only offers a comfortable living space but also the potential for a rewarding project, allowing you to create your dream home in a desirable neighbourhood.

In summary, this mid-terrace house on Glendower Road is a fantastic opportunity for those looking to invest in a spacious and well-located property in Plymouth. With its charming features and proximity to local amenities, it is sure to attract interest from a variety of buyers.





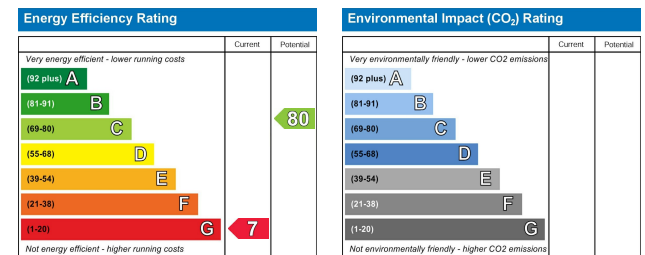
## Area Map



## Floor Plans



## Energy Efficiency Graph



These particulars, whilst believed to be accurate are set out as a general outline only for guidance and do not constitute any part of an offer or contract. Intending purchasers should not rely on them as statements of representation of fact, but must satisfy themselves by inspection or otherwise as to their accuracy. No person in this firm's employment has the authority to make or give any representation or warranty in respect of the property.