

THE HOME AGENCY

'Passion for property.'

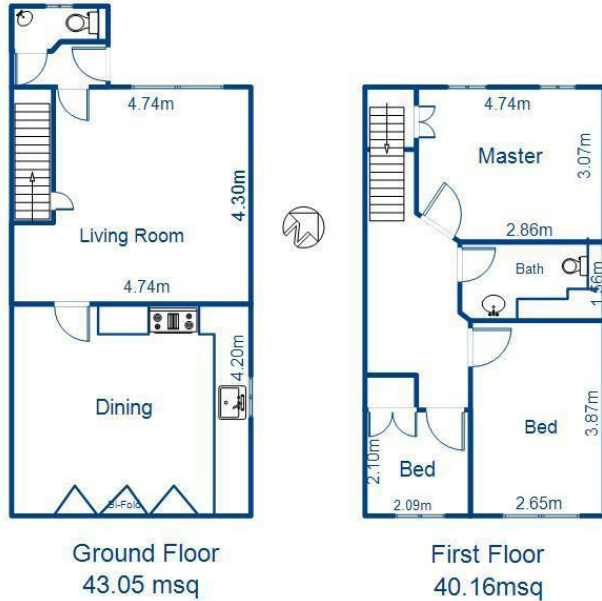


33 Clauden Close, Swaythling, Southampton, Hampshire, SO18

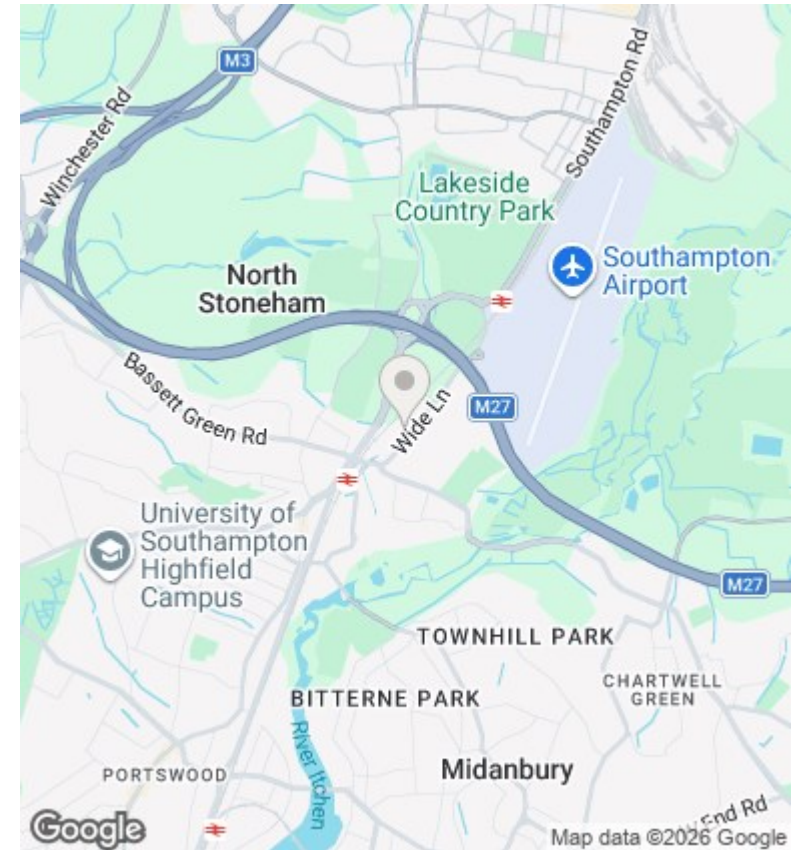
Asking Price £324,950

- Three Bed Semi Detached Family Home
- Gas Central Heating
- Downstairs WC
- No forward chain
- Stunning Kitchen/Diner
- Garden
- Two Double Bedrooms
- Double Glazing
- Double Driveway
- Modern Bathroom

33 Clauden Close Swaythling SO18 2HQ



ALL MEASUREMENTS ARE APPROXIMATE



Directions

Viewings

Viewings by arrangement only. Call 02380 632632 to make an appointment.

Council Tax Band

B

EPC Rating:

C

| Energy Efficiency Rating | | Current | Potential |
|---|---|----------------------------|-----------|
| Very energy efficient - lower running costs | | | |
| (92 plus) | A | | 89 |
| (81-91) | B | | |
| (69-80) | C | 76 | |
| (55-68) | D | | |
| (39-54) | E | | |
| (21-38) | F | | |
| (1-20) | G | | |
| Not energy efficient - higher running costs | | | |
| England & Wales | | EU Directive 2002/91/EC | |