



PERIOD
HOMES

Church Road, Hatfield Peverel. CM3 2LD

£825,000

Nestled within the sought-after village of Hatfield Peverel, Shepherd's Cottage presents a rare opportunity to acquire a characterful, detached home within a delightful setting. Dating back to the 16th century and showcasing all the warmth and charm of its period heritage, the property has been sympathetically enhanced through thoughtful extensions and modernisation. Extending to approximately 2,500 sq ft (plus carport and store), the cottage offers four reception rooms, a welcoming kitchen/dining room, utility and ground floor cloakroom. A bright conservatory links the sitting room to a versatile study, while a feature fireplace provides a true focal point to the main living space. Upstairs, there are four bedrooms, including a generous principal suite with a large en-suite bathroom, alongside a stylish five-piece family bathroom. Throughout the home, practical storage and a sense of flow - together with good ceiling heights - make for easy day-to-day living, wrapped in centuries-old character.

Outside, the cottage enjoys off-street parking and a south-west facing garden complete with a natural pond and lovely views across to Little Baddow from the first floor. The setting is exceptional - set adjacent to a vibrant allotment, and moments from walks leading towards the River Chelmer and Paper Mill Lock, yet also within walking distance of Hatfield Peverel's mainline station, offering fast and frequent services into London Liverpool Street. The village itself provides an excellent range of amenities, including a primary school, shops, pubs, and direct road access to Chelmsford and the A12.

Shepherd's Cottage offers a rare blend of period character and modern practicality - a truly special opportunity in one of mid-Essex's most desirable and well-connected villages.



Church Road

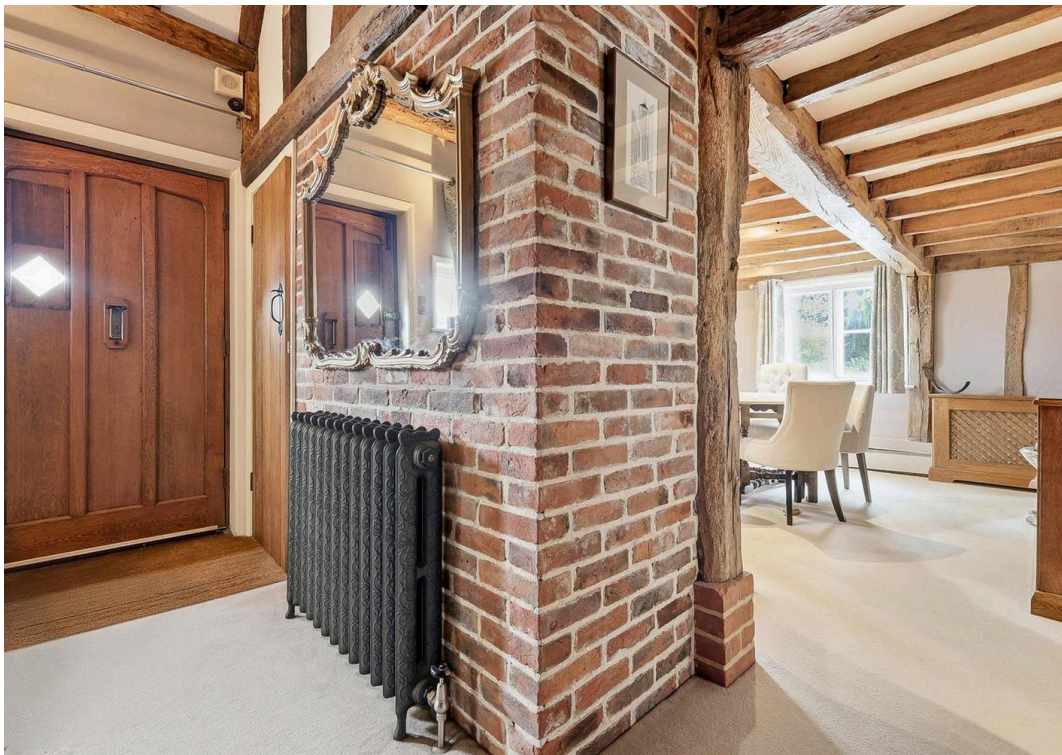
Hatfield Peverel, CM3 2LD

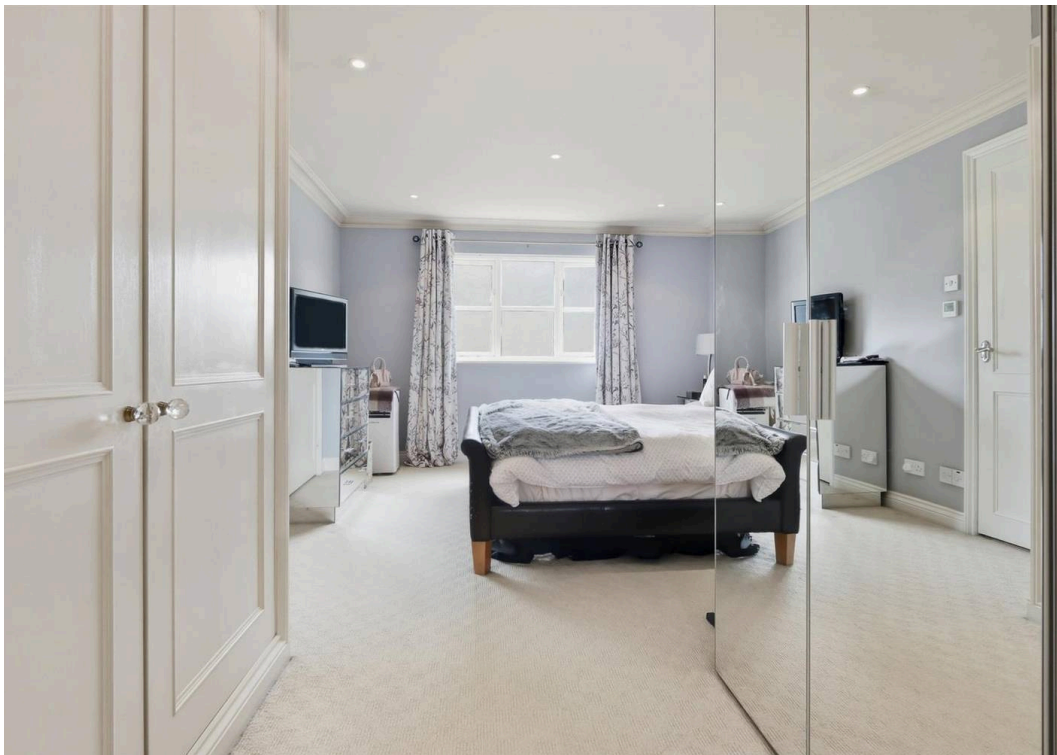
Nestled within the sought-after village of Hatfield Peverel, Shepherd's Cottage presents a rare opportunity to acquire a characterful, detached home within a delightful setting.

Council Tax band: G

Tenure: Freehold









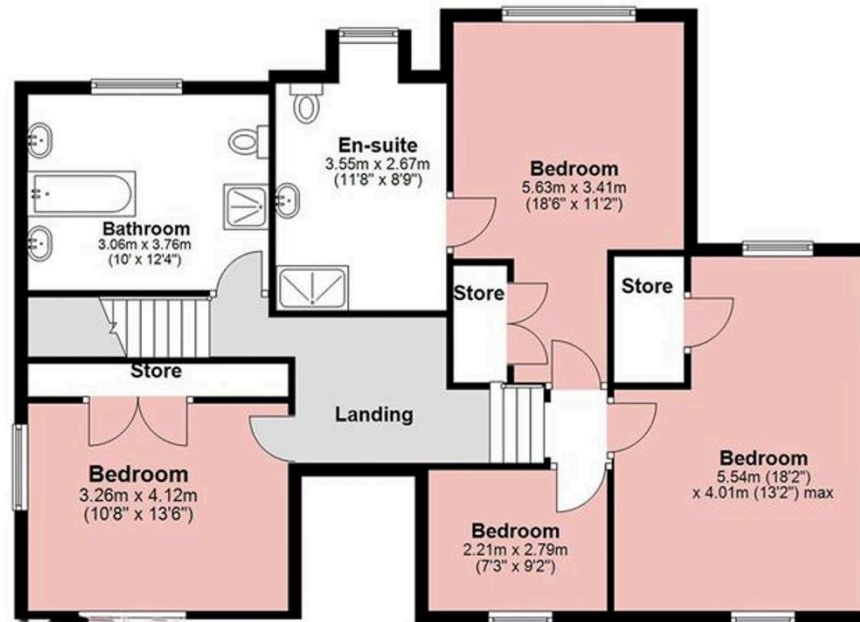
Ground Floor

Approx. 163.5 sq. metres (1759.4 sq. feet)



First Floor

Approx. 97.9 sq. metres (1053.4 sq. feet)



About Us

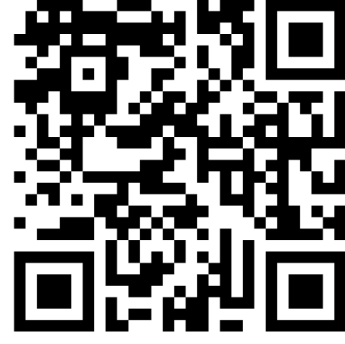
From charming cottages to country estates, all our homes have a story to tell... 'Period Homes' is one of a kind, an agency dedicated to the sale of character and period properties across Essex.

If you would like to buy a period home but you have a modern home to sell first, we can assist via our sister company, Walkers, which just so happens to have been voted Britain's Best Estate Agency in the British Property Awards. That way, both elements of your move are in the very best of hands.

Get In Touch



Browse Properties



PERIOD HOMES

Psst... Have you heard of discreet marketing?

Many people lose out on their dream home to someone in a better position.

Often, it is because they have delayed putting their house on the market, preferring to find somewhere first and then sell.

That is why we have innovated a totally unique and highly confidential moving home solution to put you in a competitive position.

Let us find you a buyer without any advertising or pressure and without the neighbours knowing.

Your secret is safe with us...

Get in touch for a complimentary valuation.

Looking To Sell Or Let Your Home?

Book your free valuation to see how much your home is worth.



Contact Us
01277 288000



Our Website
periodhomes.co.uk



Our Address
Eaton House
High Street
Ingestone
CM4 9DW

