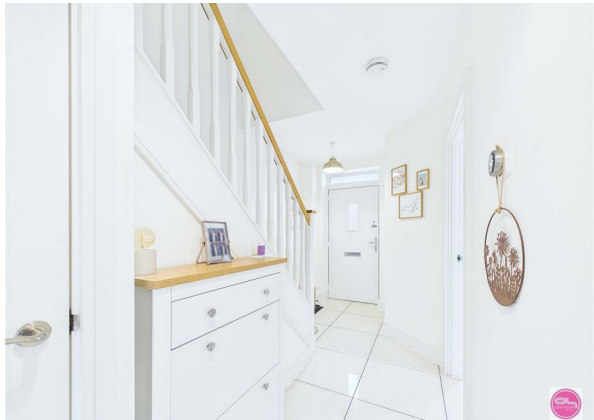


Furnace Lane, Castle Gresley, Swadlincote, DE11 9QF

£225,000

Council Tax Band: C



Attention first time buyers!! Welcome to this immaculately presented three-bedroom semi-detached property, offered with no onward chain, which is situated on the highly desirable Manorfields Development in Castle Gresley. The property has been decorated and is well-maintained throughout, perfect, and ready to move into.

This modern and well-presented three-bedroom semi-detached home is ideal for families or professionals. The property features a welcoming entrance hallway, cloakroom/WC, a stylish kitchen, and a spacious lounge/dining room with French doors opening onto the rear garden. Upstairs, there are three bedrooms, including an en-suite to the main bedroom, and a family bathroom.

Externally, the property benefits from a small front garden, a generous driveway with space for multiple vehicles, and a private rear garden with gated access.

The property is in catchment for sought-after schools, and benefits from fantastic transport links for the M42, A511 and A38, and is near to the town centres of Swadlincote Ashby-de-la-Zouch, and Burton on Trent.



Open House Burton & Swadlincote

