



114 Pytchley Road

Kettering, Northamptonshire NN15 6JA



Simpson & Partners



Ideally situated within a short distance of the town centre and other local amenities, this superb extended two/three bedroom semi-detached bungalow is a rare find that truly must be seen to be appreciated. From the moment you arrive, it is clear that the property has been thoughtfully improved and meticulously maintained throughout, offering spacious and versatile accommodation suited to a wide range of buyers.

The property benefits from a host of desirable features, including upvc double glazing, gas radiator central heating, and upvc fascia boards for ease of maintenance. At the heart of the home lies a stunning 24' luxury fitted kitchen/dining/family room, complete with a comprehensive range of built in and integrated appliances, providing the perfect space for both everyday family living and entertaining. Flowing seamlessly from this is a generous 16' conservatory, while to the front of the property a charming 13' bay fronted sitting room offers a bright and welcoming reception space, alternatively could be used as a third bedroom if required.

The accommodation comprises an entrance porch, entrance hall, study area, sitting room/bedroom, kitchen/dining/family room, conservatory, two double bedrooms and a shower room. Bedroom one is enhanced by fitted wardrobes, Upstairs, a further first floor double bedroom adds to the flexibility of the layout, ideal for guests, family members or use as a private retreat. and both are served by the three piece shower room.

Externally, the property continues to impress with a neat frontage and a landscaped rear garden that has been designed with both relaxation and easy upkeep in mind. A tandem size garage/workshop provides an excellent storage area or scope for hobbies, while a driveway to the front offers parking for 2/3 cars. An internal viewing is a must to fully appreciate everything this superb extended bungalow has to offer.

 2

 1

 2

Price £285,000

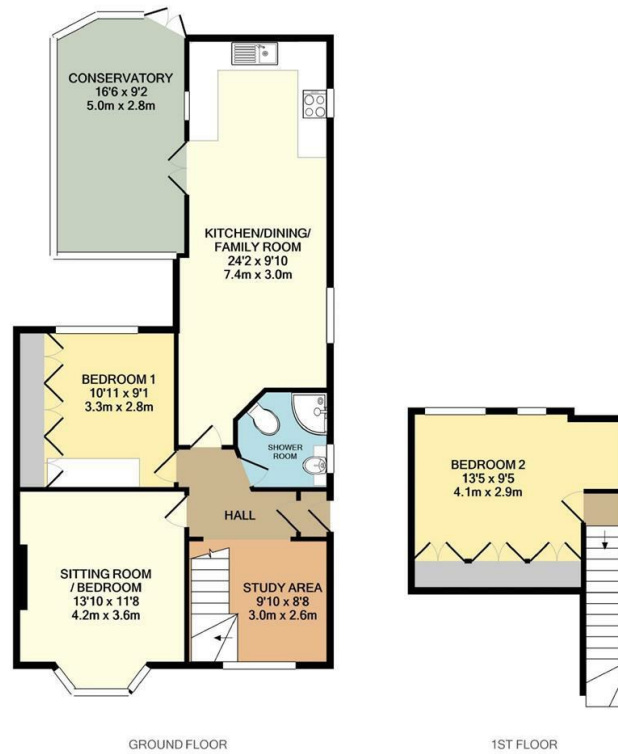




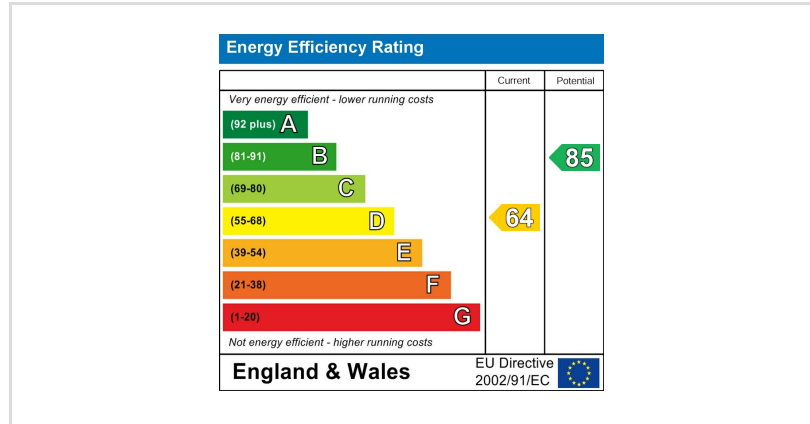


Bay Fronted Sitting Room With Feature Fireplace And A 16' Conservatory.





While every attempt has been made to ensure the accuracy of the floor plan contained here, measurements of floors, windows, doors and any other items are approximate and no responsibility is taken for any error, omission or mis-statement. The plan is copyright to Simpson and Partners and is for identification purposes and should not be used as such by any prospective purchaser. The services, systems and appliances shown here are for the benefit and no guarantee as to their operability. Made with Nevelgen ©2021



You may download, store and use the material for your own personal use and research. You may not republish, retransmit, redistribute or otherwise make the material available to any party or make the same available on any website, online service or bulletin board of your own or of any other party or make the same available in hard copy or in any other media without the website owner's express prior written consent. The website owner's copyright must remain on all reproductions of material taken from this website.

When you buy with Simpson and Partners, you know **you'll be in safe hands**. From the moment you walk through our doors, we'll make you **feel truly welcome**. Our sales consultants and financial advisors will take you through **every step of the process**, offering **free expert advice** along the way, from help choosing the right mortgage and insurance through to finding your conveyancer. And if you need help selling your home too, **with over 20 years of local experience, you can trust us to get you moving**.



**Simpson
& Partners**

Making Every
Journey Personal



01536 518200

kettering@simpsonandpartners.co.uk

<https://www.simpsonandpartners.co.uk/>

1 Silver Street, Kettering, Northants, NN16 0BN