

21 Craythorne  
Gardens  
North Heaton  
Newcastle Upon Tyne  
NE6 5UJ

Offers Over  
£245,000

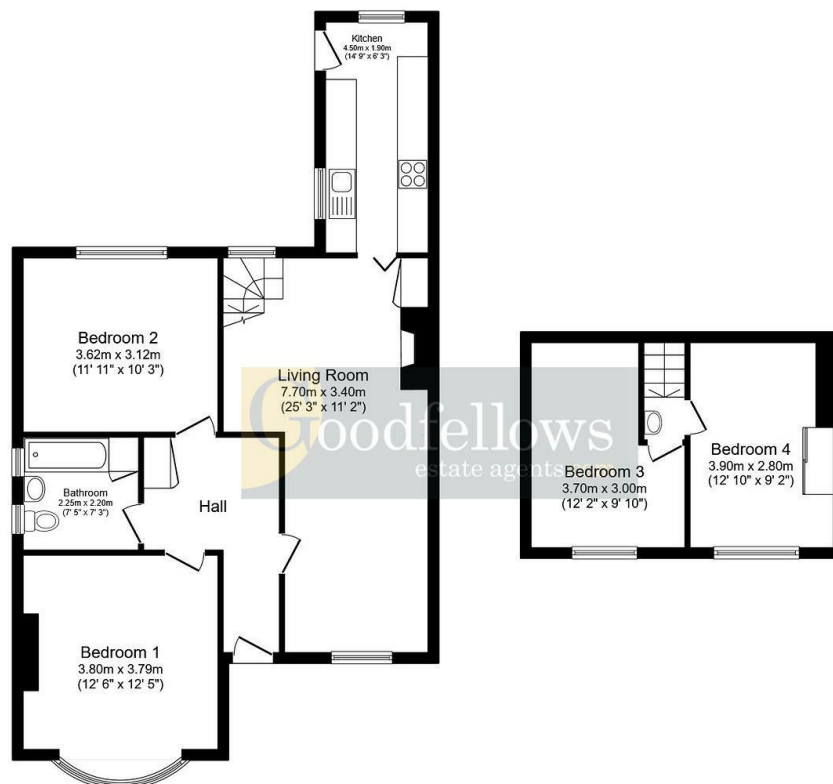


21 Craythorne Gardens  
North Heaton  
Newcastle Upon Tyne  
NE6 5UJ

- Spacious 4 bedroom Dorma semi detached bungalow
- Flexible living accomodation
- No upper chain invovled
- Driveway & garage
- Open plan lounge diner
- Modern kitchen
- Low maintenance rear garden
- Council tax band C







**Ground Floor**  
Floor area 78.3 sq.m. (843 sq.ft.)

**First Floor**  
Floor area 23.6 sq.m. (254 sq.ft.)

**Total floor area: 101.9 sq.m. (1,097 sq.ft.)**

This floor plan is for illustrative purposes only. It is not drawn to scale. Any measurements, floor areas (including any total floor area), openings and orientations are approximate. No details are guaranteed, they cannot be relied upon for any purpose and do not form any part of any agreement. No liability is taken for any error, omission or misstatement. A party must rely upon its own inspection(s).



**EPC Rating:**  
**Council Tax Band: C**

Whilst every care has been taken to prepare these particulars, they are for guidance purposes only. All measurements are approximate and whilst every care has been taken to ensure their accuracy, they should not be relied upon and potential buyers/tenants are advised to recheck the measurements. The agent has not tested any equipment, services, fixtures or fittings and makes no representation regarding their condition.

**CONTACT**  
246 Chilingham Road, Heaton,  
Newcastle upon Tyne, NE6 5LQ  
E: [heaton@goodfellowsestateagents.com](mailto:heaton@goodfellowsestateagents.com)  
T: 0191 2654400

