



Praed Street, Paddington, W2

2 Bedrooms

£2,275 per month



LONDON ESTATES



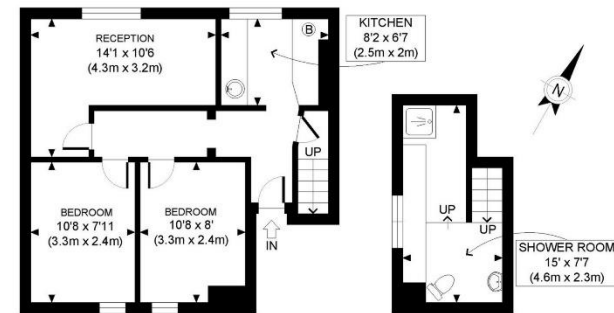
SPLIT LEVEL | SEPARATE KITCHEN | WOODEN FLOORING | GREAT LOCATION | CLOSE TO PADDINGTON STATION

Available Date: 22nd August 2026

EPC Rating: E | Council Tax: D - £2,275 per month



LONDON ESTATES



SECOND FLOOR
GROSS INTERNAL
FLOOR AREA 443 SQ FT

THIRD FLOOR
GROSS INTERNAL
FLOOR AREA 101 SQ FT

APPROX. GROSS INTERNAL FLOOR AREA: 544 SQ FT/ 51 SQM

PROPERTY PHOTO PLANS.CO.UK
ONE STOP SHOP FOR PROPERTY MARKETING

This plan is for illustrative purposes only and should be used as such by any prospective client. Whilst every attempt has been made to ensure the accuracy of the Floor Plan contained here, measurements of the doors, windows, rooms and any other items are approximate and no responsibility is taken for any errors, omissions, or misstatement. The services, systems and appliances shown have not been tested and no guarantee as to the operability or efficiency can be given.