



HINCHLIFFE  
HOLMES

3 MANOR FARM BARNES



# 3 MANOR FARM BARNES

Willington | CW6 0NG

Situated in a sought-after picturesque location and positioned on a quiet development with outstanding undisturbed views across the Cheshire countryside, a beautifully presented barn conversion upgraded to a high standard of finish and specification, with superb accommodation and character features throughout. Landscaped private gardens with fantastic outside entertainment space, driveway providing off road parking and car port.

Willington is one of the area's most highly regarded villages and is renowned for its wonderful setting amidst some of Cheshire's most spectacular countryside. Within walking distance of the property is The Boot public house and also Willington Hall which has a restaurant, event facilities and also a Riding School.

Willington is conveniently located just 1 mile from Kelsall and 3 miles from Tarporley village centre.

Tarporley, is renowned for its Historic High Street which is located approximately 12 miles from Chester and offers a superb range of amenities including fashion boutiques, art galleries, DIY, florists, hairdressers, chemist, hospital, petrol station and other general stores. There is also a range of pleasant restaurants and public houses, which complete the thriving village. Additionally, Tarporley has the added benefit of two highly regarded Golf courses. Tarporley has its own two churches and both primary and secondary schools. There is easy access to the surrounding villages, motorway and railway networks, which give access to the north and south of the UK.

## GROUND FLOOR

Entrance Hall | Dining Kitchen | Utility Room  
Lounge | Study/Bedroom Four | WC

## FIRST FLOOR

Landing | Bedroom One - En-suite  
Bedroom Two | Bedroom Three | Bathroom

## OUTSIDE

Parking | Car Barn | Gardens



Nearby Kelsall is an extremely popular semi-rural Cheshire village and offers excellent day-to-day amenities and a superb position amidst some of Cheshire's most picturesque countryside.

Within the village there is a Co-operative convenience store with internal Post Office/Bureau De Change, butchers, pharmacist, community hall, doctor's surgery, new WellBeing Hub and medical centre, vets' practice, Parish church, and Methodist chapel. Located in the centre of the village are playing fields with specialist children's play area. Worthy of particular attention is that in recent times Brunning & Price have completed a complete refurbishment of the pub in the centre of the village now called The Morris Dancer. In addition, there are two further pubs - The Royal Oak and The Farmers Arms. There is also an increasingly popular takeaway sandwich/coffee bar known as Citrus.

For those with educational needs, Kelsall has an OUTSTANDING Ofsted rated primary school, which in turn feeds into the nearby OUTSTANDING Ofsted rated Tarporley High School.

The area as a whole has access to glorious countryside and places of significant interest that include ancient castles, boating facilities on nearby canals and Delamere Forest. Wonderful walks are provided via the Whitegate Way and Sandstone Trail and in the Willington and Utkinton Hills - known locally as 'Little Switzerland'.

In terms of road links, there are extensive connections to the M56, M6 and M53. The A49, A51 and A55 all link to key areas of commerce and interest.

With regards to railway services, there are stations at nearby Hartford, Cuddington, Frodsham, and Chester.

All operate on either the Chester - Manchester or Liverpool - London lines. Fantastic connections can be enjoyed at Crewe railway station, with the service to London taking just over 90 minutes. Two international airports can be located within 45 minutes' drive - Liverpool John Lennon International Airport and Manchester International Airport.







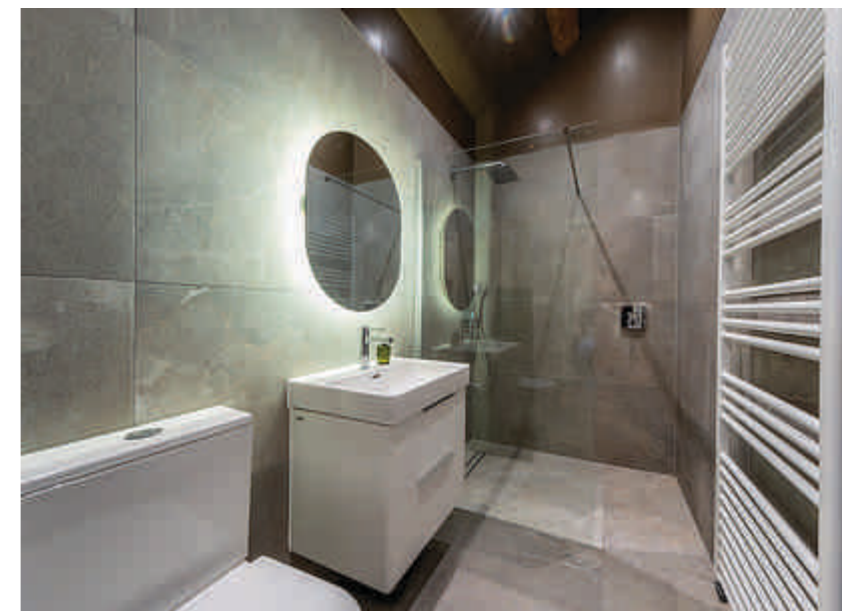








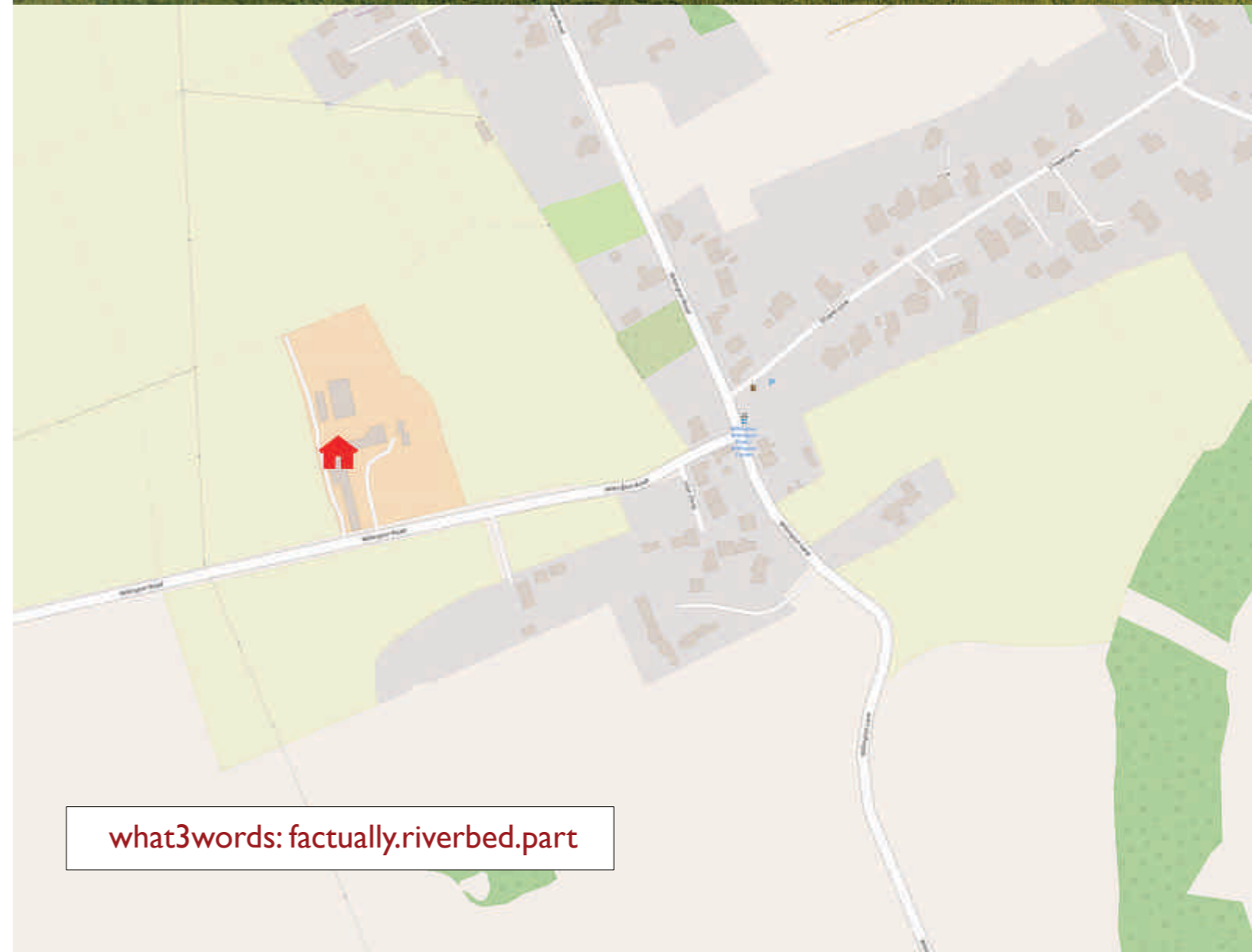
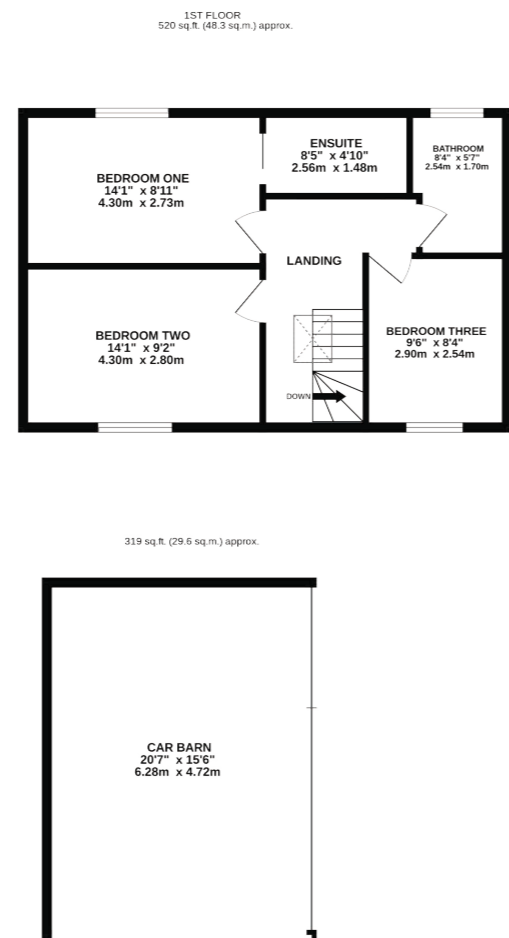
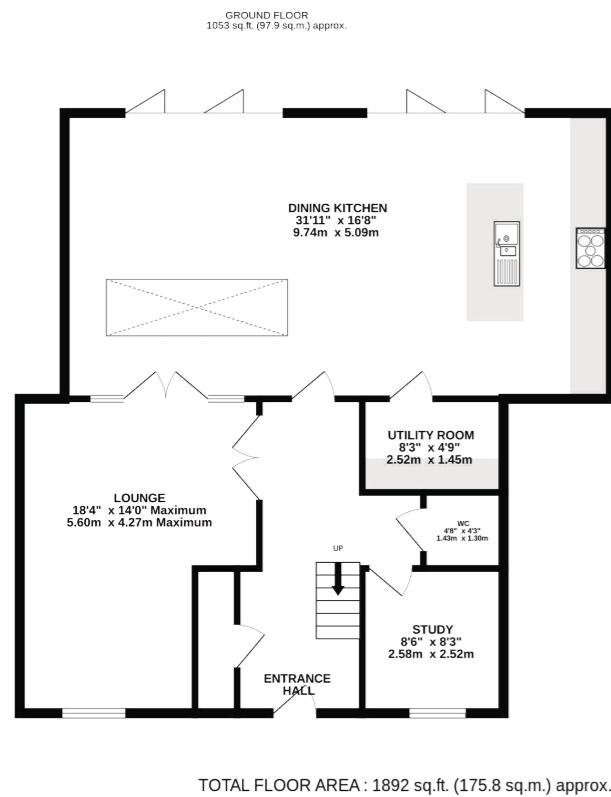












what3words: factually.riverbed.part

#### TENURE

Freehold. Subject to verification by Vendor's Solicitor.

Please Note:- There is a Management Charge for the development. Verification by Vendor's Solicitor.

#### SERVICES (NOT TESTED)

We believe that mains water, electricity, air-source central heating and private drainage are connected.

#### LOCAL AUTHORITY

Cheshire West And Chester. Council Tax – Band F.

#### POSSESSION

Vacant possession upon completion.

#### VIEWING

Viewing strictly by appointment through the Agents.

NOTICE: Hinchliffe Holmes for themselves and for the vendors or lessors of this property whose agents they are give notice that:

(i) the particulars are set out as a general outline only for the guidance of intending purchasers or lessees, and do not constitute, nor constitute part of, an offer or contract;

(ii) all descriptions, dimensions, references to condition and necessary permissions for use and occupation, and other details are given in good faith and are believed to be correct but any intending purchasers or tenants should not rely on them as statements or representations of fact but must satisfy themselves by inspection or otherwise as to the correctness of each of them;

(iii) no person in the employment of Hinchliffe Holmes has any authority to make or give any representation or warranty whatever in relation to this property.

(iv) Whilst every attempt has been made to ensure the accuracy of the floor plan contained here, measurements of doors, windows, rooms and any other items are approximate and no responsibility is taken for any error, omission, or mis-statement. This plan is for illustrative purposes only and should be used as such by any prospective purchaser. The services, systems and appliances shown have not been tested and no guarantee as to their operability or efficiency can be given.



Hinchliffe Holmes is an award winning independent family estate agency positioned in the heart of Cheshire with offices in Tarporley and Northwich.

The business was founded with a passion for providing properties that are accessible to clients at all stages of their working and family lives. Most importantly it provides an exciting approach

### EXCLUSIVE LISTINGS

An Exclusive Listing is a home sale that is not listed on the open market and therefore it is sold off-market using more private and discrete methods.

Your home is one of a kind, the process of selling should be unique to you and your needs. Not all home sellers follow the traditional route when putting their home on the market. For some, an Exclusive Listing, can be the right method to sell their home.

### LAND & NEW HOMES

The team at Hinchliffe Holmes offer experienced and professional advice for the purchase and sale of land, property development and the purchase of newly built and developed property.

to the property market meeting the personal needs of our clients.

Hinchliffe Holmes specialises in the sale of town and country properties, shaping its reputation on a bespoke level of quality advice, superb local knowledge and exceptional customer service, along with maximum exposure of all properties through our wide advertising and marketing ability.

### MORTGAGES

The Hinchliffe Holmes team is committed to providing the best possible service and advice. Our team of skilled and caring advisors will guide you through the mortgage application, removing the stress and simplifying the whole process.

### LETTINGS

With our bespoke and personal approach, Hinchliffe Holmes has a tailored range of services to suit your needs as a Landlord. Our expert team will showcase your property to thousands of potential tenants each month.

### PROPERTY MANAGEMENT

With various service options to choose from, you can decide which package suits your requirements, and as an independent agent we can tailor-make each service for each landlord.

more than  
**30,000**  
viewings arranged

**£600 MILLION**  
worth of property sold

on average  
**99.1%**  
of asking price achieved

**OVER 7,000 OFFERS**





**HINCHLIFFE  
HOLMES**

**INDEPENDENT ESTATE AGENTS**

**SALES | LETTINGS | MORTGAGES  
LAND & NEW HOMES | PROPERTY MANAGEMENT**

**TARPORLEY OFFICE**

56B High Street, Tarporley, Cheshire, CW6 0AG

01829 730 021 - [tarporley@hinchliffeholmes.co.uk](mailto:tarporley@hinchliffeholmes.co.uk)

**NORTHWICH OFFICE**

28 High Street, Northwich, Cheshire, CW9 5BJ

01606 330 303 - [northwich@hinchliffeholmes.co.uk](mailto:northwich@hinchliffeholmes.co.uk)

[www.hinchliffeholmes.co.uk](http://www.hinchliffeholmes.co.uk)