



Luxury Penthouse - Randolph Avenue, Little Venice W9

Guide Price £2,995,000, Leasehold - Share of Freehold

NAPIER WATT

T: 0207 935 0011
E: enquiries@napierwatt.co.uk
W: napierwatt.co.uk

35 Berkeley Square, Mayfair, London, W1J 5BF







Description

Napier Watt are pleased to offer for sale this stunning, luxury, interior designed, penthouse apartment located in the heart of Little Venice.

This exceptional residence comprises three luxurious en-suite bedrooms and has been finished to an outstanding specification. The Penthouse which has vaulted ceiling benefits from elegant herringbone flooring, underfloor heating, air conditioning, and integrated Lutron lighting. The bespoke kitchen is fully fitted with premium Miele appliances, while the expansive open-plan reception room and separate study feature beautifully crafted bespoke joinery, creating a refined and sophisticated living environment.

Entrance Hall, Huge Reception Room With 4m High Ceilings, Luxury Fully Fitted Kitchen, Three Ensuite Bedroom Suites, Guest WC, 2 x Terraces With Far Reaching Views, Porter, Air Conditioning, Under Floor Heating, Porter, EPC Rating D.

Key Features

- BRAND NEW INTERIOR DESIGNED
- LIFTS
- AIR CONDITIONING
- 2 BALCONIES
- PENTHOUSE WITH STUNNING VIEWS
- SHARE OF FREEHOLD
- UNDER FLOOR HEATING
- DAY PORTER

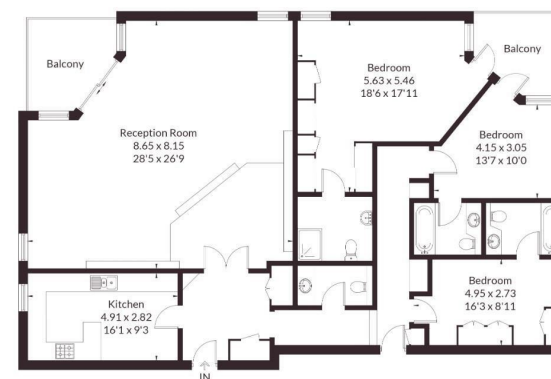
Terms

Service Charge: £13,000

Leasehold/Share of Freehold: 980 Years Remaining.

Council Tax Westminster Band H

Approximate Floor Area = 174.1 sq m / 1874 sq ft



Eighth Floor

Drawn for illustration and identification purposes only by @fourwalls-group.com #106969

IMPORTANT: We would inform prospective purchasers that these sales particulars have been prepared as a general guide only. A detailed survey has not been carried out, nor the services, appliances and fittings tested. Room sizes should not be relied upon for furnishing purposes and are approximate. If floor plans are included, they are for guidance only and illustration purposes only and may not be to scale. If there are any important matters likely to affect your decision to buy, please contact us before viewing the property.