



Guide Price
£750,000

Freehold

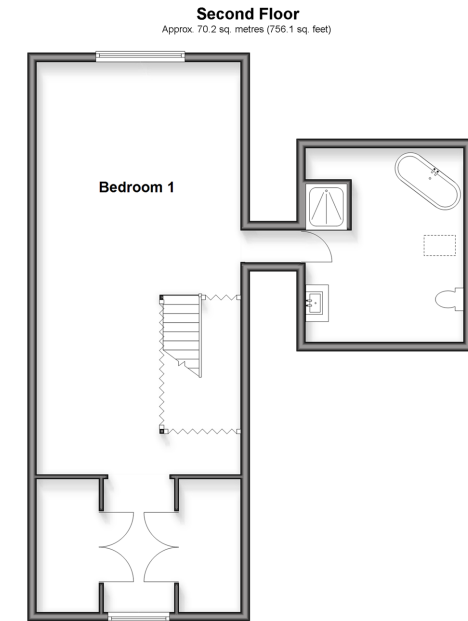
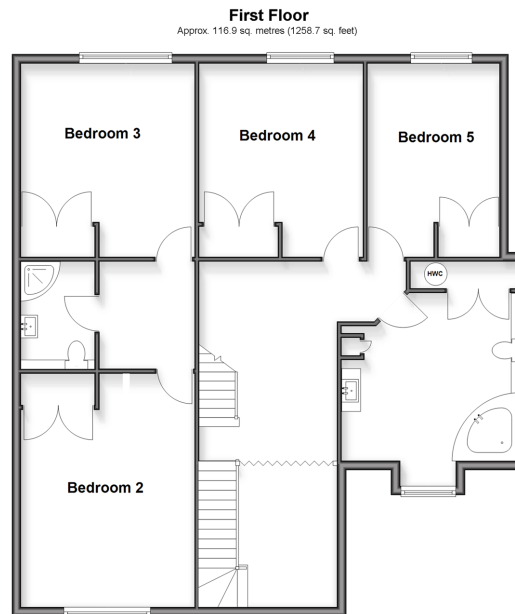
5x  3x  2x 

**Wilbrough Road,
Birchington, Kent, CT7**

OVER 60?

Secure this property
for up to **59% less!**

Wards
Helping you move forwards



Accommodation

GROUND FLOOR

Entrance Hallway

Cloakroom

Sitting Room : 15'0 x 12'6 (4.58m x 3.81m)

Lounge : 26'1 x 16'0 (7.96m x 4.88m)

Kitchen : 19'6 x 17'11 (5.95m x 5.46m)

Sun Room : 18'3 x 11'0 (5.57m x 3.36m)

FIRST FLOOR

Landing

Bedroom 5 : 14'0 x 9'7 (4.27m x 2.92m)

Bedroom 4 : 14'0 x 11'1 (4.27m x 3.38m)

Bedroom 3 : 14'0 x 12'6 (4.27m x 3.81m)

Bedroom 2 : 16'11 x 12'6 (5.16m x 3.81m)

Shower Room

Bathroom

SECOND FLOOR

Bedroom 1 : 38'9 x 14'8 (11.82m x 4.47m)

En-Suite Bathroom

OUTSIDE

Integral Garage

Off Road Parking

Garden to Rear



Main features

- Spacious living accommodation
- Modern kitchen
- Well-proportioned bedrooms
- Large rear garden with Porcelain tiled patio
- Driveway, garage, and ample off-road parking



Nearest Schools

Primary Schools: Birchington C of E Primary 0.3 miles, St Saviour's C of E Junior School 1.0 miles, Garlinge Primary and Nursery 2.2 miles
Secondary Schools: King Ethelbert School 0.5 miles, Ursuline College 0.7 miles



Transport Information

Train Stations: Birchington-On-Sea 0.3 miles, Westgate-on-Sea 1.2 miles, Margate 2.7 miles



Address

Wilbrough Road, Birchington, Kent, CT7



Directions

For directions to this property please contact us.



Wards
Helping you move forwards

Call Birchington Branch 01843 842551 ■ wardsofkent.co.uk



- Legal advice should be taken to verify fixtures/fittings, planning, alterations and/or lease details
- Appliances & services are untested, dimensions are approximate and floor plans are not to scale
- Through a Homewise Home For Life Plan people aged 60+ can secure this property for up to 50% less, by purchasing a Lifetime Lease.



10129978/20251027/AT/AT