



# Nathan K Real Estate

65 Amwell Street, London - EC1R 1UR

02034111143 • [ec1@nathankrealestate.com](mailto:ec1@nathankrealestate.com) • [nathankrealestate.com](http://nathankrealestate.com)



**NATHAN K**  
REAL ESTATE  
#NOTPROPERTYFINDER



# 1 Prideaux Place

London

A substantial Grade II listed Georgian residence, positioned on the highly regarded Prideaux Place, dating from circa 1830 and extending to approximately 3,000 sq ft. The accommodation is arranged over well-proportioned floors and includes two principal reception rooms, defined by excellent ceiling heights, large sash windows and strong natural light throughout. The layout is both practical and versatile, suited to family living as well as formal entertaining. There are six bedrooms and six bathrooms, providing a high level of flexibility for a range of requirements, including guest accommodation and home working. The house retains a number of period features consistent with its era, while offering a straightforward and functional internal arrangement.

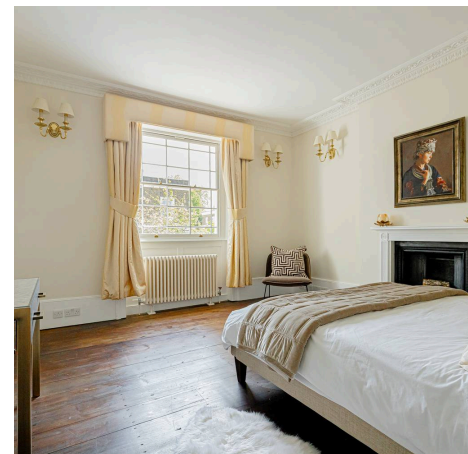
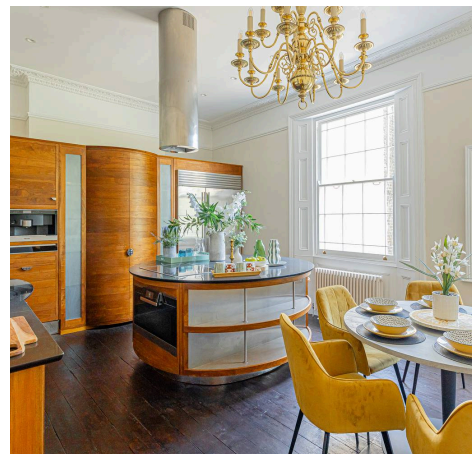
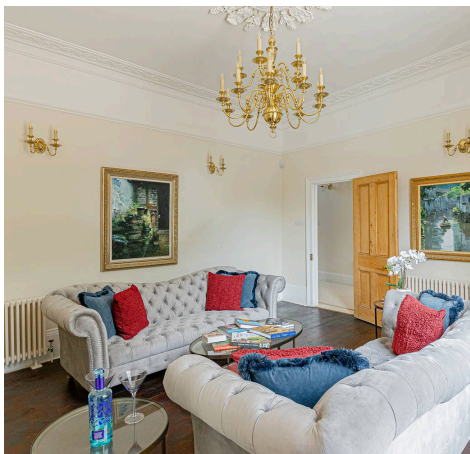
Council Tax band: G

Tenure: Freehold

EPC Energy Efficiency Rating: D

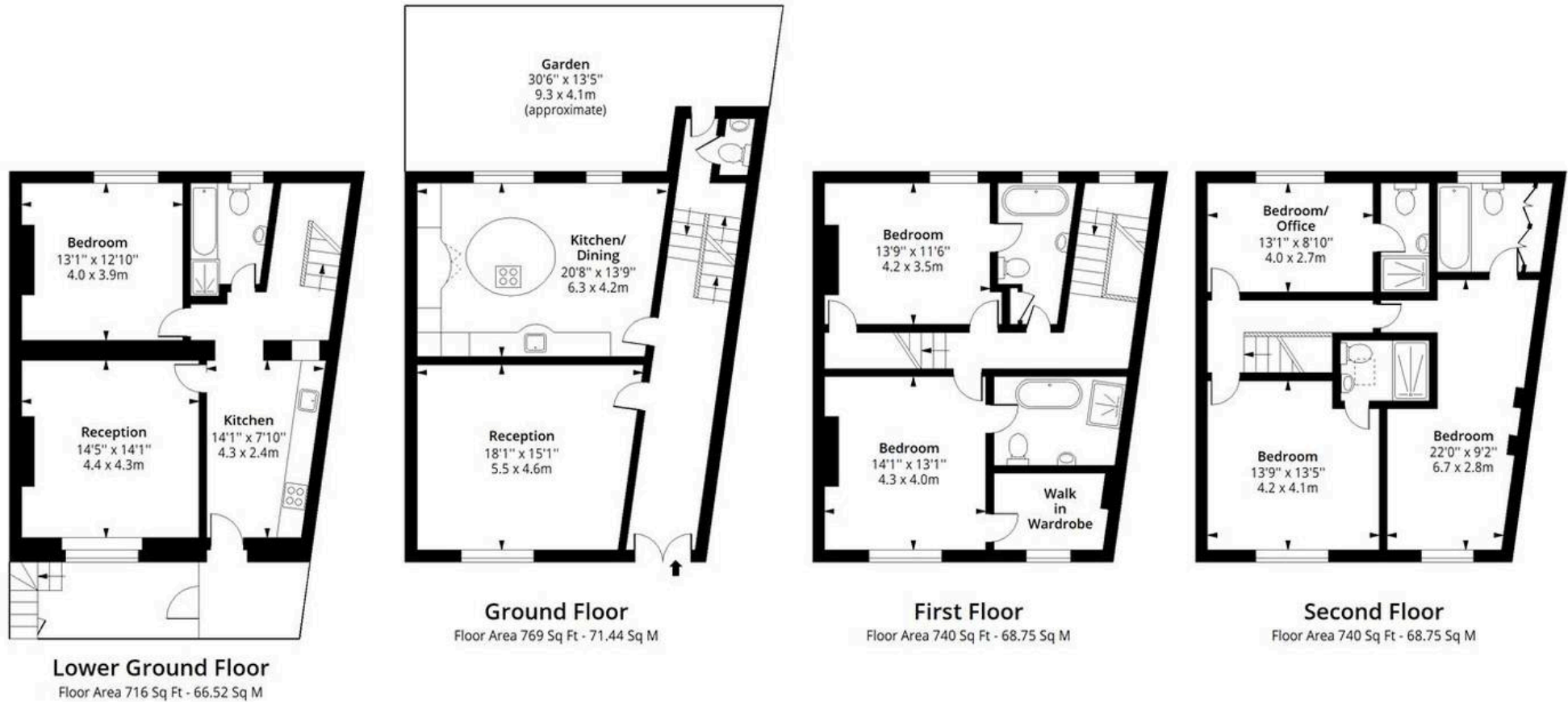
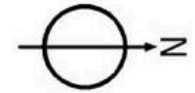
EPC Environmental Impact Rating: E

- 3,000 Sq Ft
- Bespoke Smallbone Kitchen
- Private West Facing Garden
- Prime Location
- Six Bedrooms & Six Bathrooms
- High Ceilings & Large Sash Window



# Prideaux Place, WC1X

Approx. Gross Internal Area 2965 Sq Ft - 275.45 Sq M



Measured according to RICS IPMS2. Floor plan is for illustrative purposes only and is not to scale. Every attempt has been made to ensure the accuracy of the floor plan however all measurements, fixtures, fittings and data shown are an approximate interpretation for illustrative purposes only. 1 sq m = 10.76 sq feet.

lpaplus.com

