



10, Weymouth Street,
, W1W

£1,150 Per Week,

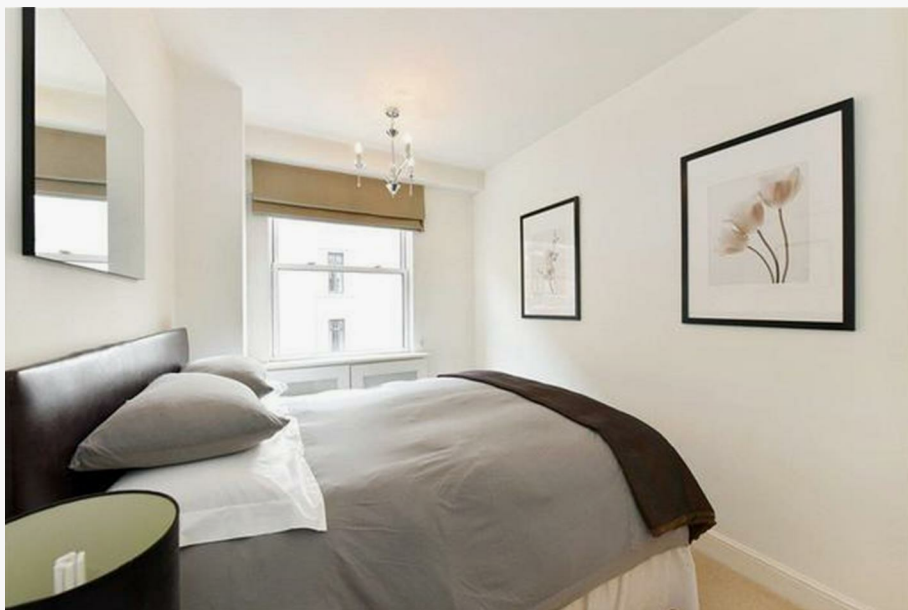
NAPIER WATT

T: 0207 935 0011
E: enquiries@napierwatt.co.uk
W: napierwatt.co.uk

35 Berkeley Square, Mayfair, London, W1J 5BF







Description

A wonderful two bedroom and two bathroom apartment with balcony within this smart 24-hour portered building in the heart of Marylebone. The apartment is well-presented with contemporary furnishings and comprises of a spacious reception room with dining area, fully fitted and equipped kitchen, guest cloakroom, two double bedrooms and two smart bathrooms.

Available, furnished.

Westminster Council Tax Band G

Key Features

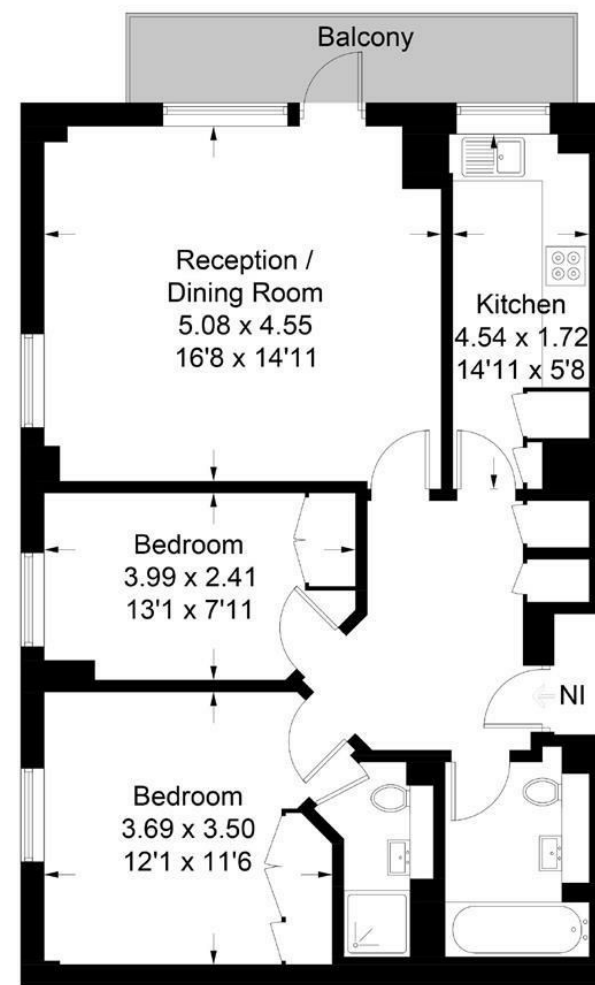
- BALCONY
- FURNISHED
- AIR CONDITIONING
- 24 PORTERS
- LIFTS

Terms

Fees & Charges: Tenancies exceeding £100,000 Per annum £480 inc Vat, Tenancies where a company is a tenant £480 Inc Vat.

Weymouth Street, W1W

Approximate Gross Internal Area = 73.3 sq m / 789 sq ft



Second Floor

This plan is for layout guidance only. Not drawn to scale unless stated. Windows and door openings are approximate. Whilst every care is taken in the preparation of this plan, please check all dimensions, shapes and compass bearings before making any decisions reliant upon them. (ID537882)

IMPORTANT: We would inform prospective purchasers that these sales particulars have been prepared as a general guide only. A detailed survey has not been carried out, nor the services, appliances and fittings tested. Room sizes should not be relied upon for furnishing purposes and are approximate. If floor plans are included, they are for guidance only and illustration purposes only and may not be to scale. If there are any important matters likely to affect your decision to buy, please contact us before viewing the property.