

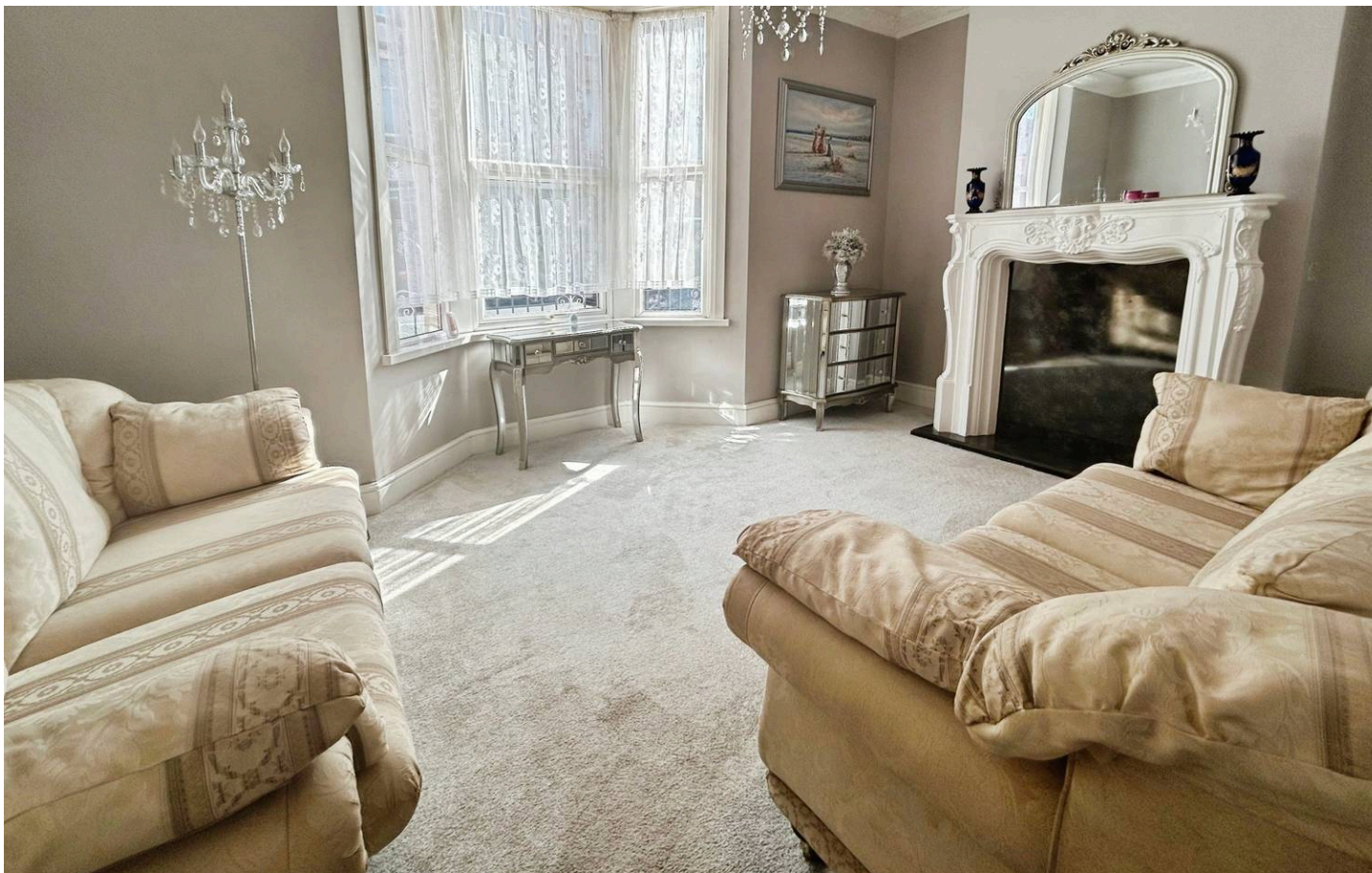
Payton
Jewell
Caines



53 Talbot Road, Port Talbot – SA13 1HU

Port Talbot

In Excess of £160,000

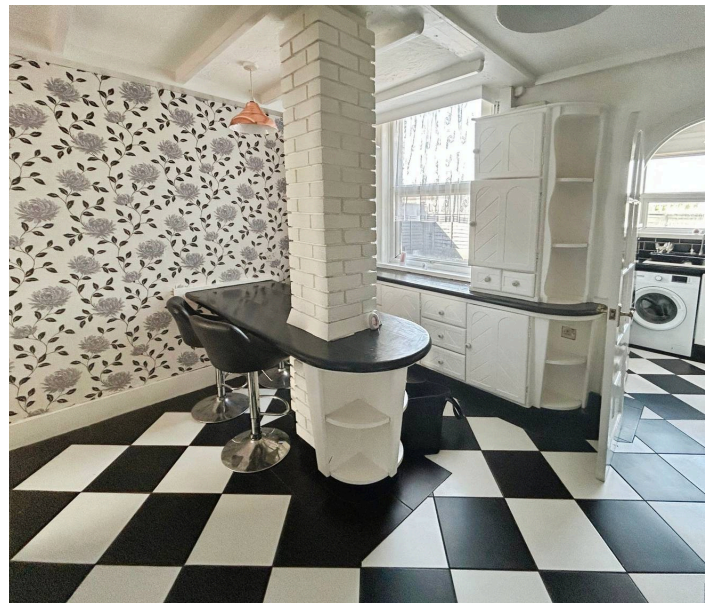


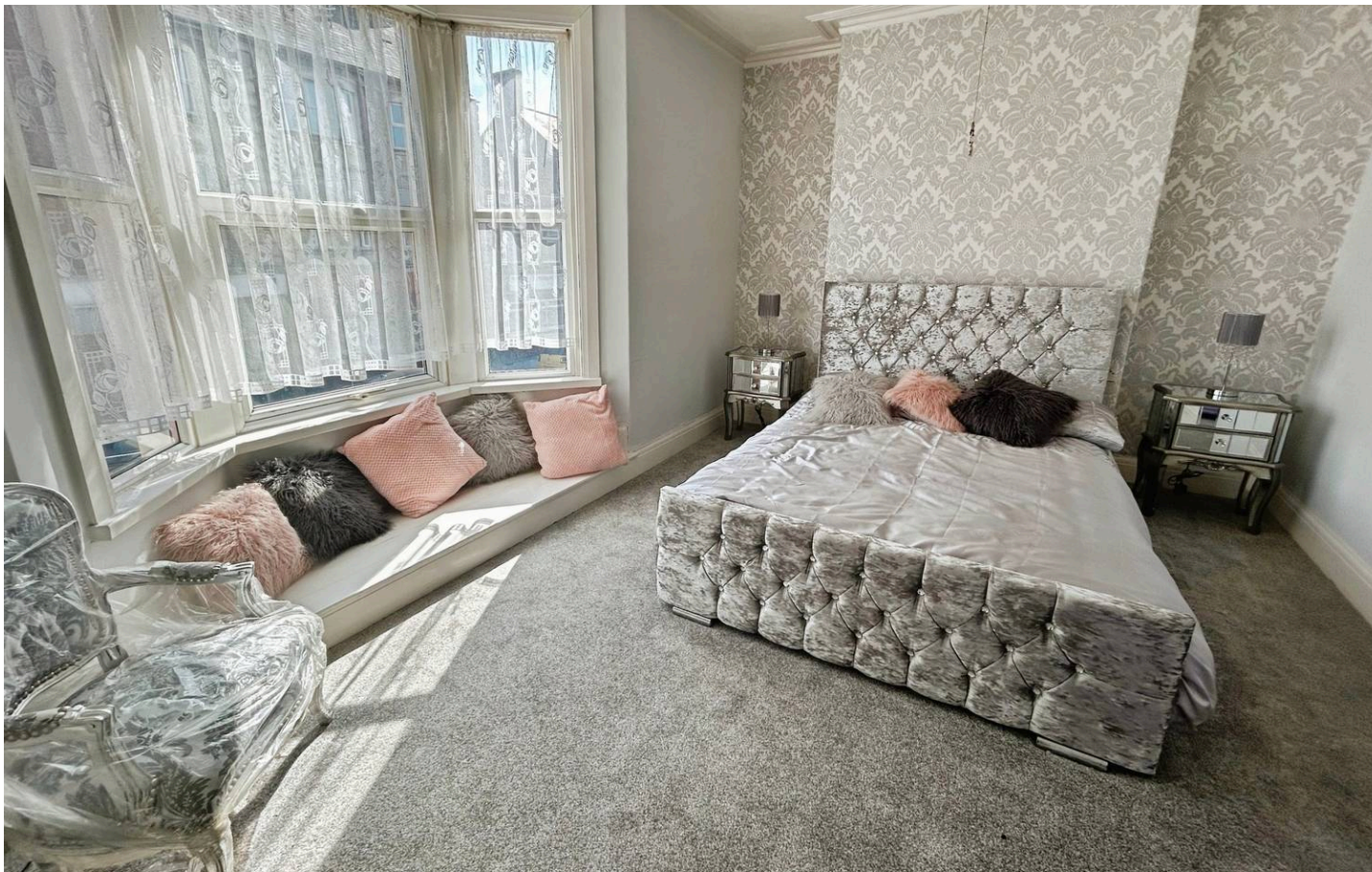
53 Talbot Road

Port Talbot, Port Talbot

We are delighted to present to the market this beautifully presented three bedroom mid terrace property ideally located within walking distance to Port Talbot town centre with all the local shops, amenities, transport links and good access to the M4 corridor. This three bedroom terraced house would be perfect for growing families or first time buyers. The accommodation briefly comprises to the ground floor; entrance hall, three reception rooms and kitchen. To the first floor three bedrooms and family bathroom. Externally front and rear low maintenance gardens.

- 3 Bed Mid Terraced House
- 3 Reception Rooms
- Low Maintenance Gardens
- Beautifully Presented Throughout
- Spacious Family Bathroom
- EPC D
- Walking Distance To Port Talbot Town Centre





Entrance Hall

Access via wood single glazed front door. Original front facing round stained glass window. Stippled and coved ceiling. Pendant light and ceiling rose. Emulsioned walls. Radiator. Porcelain floor tiles. Doors leading off.

Reception 1

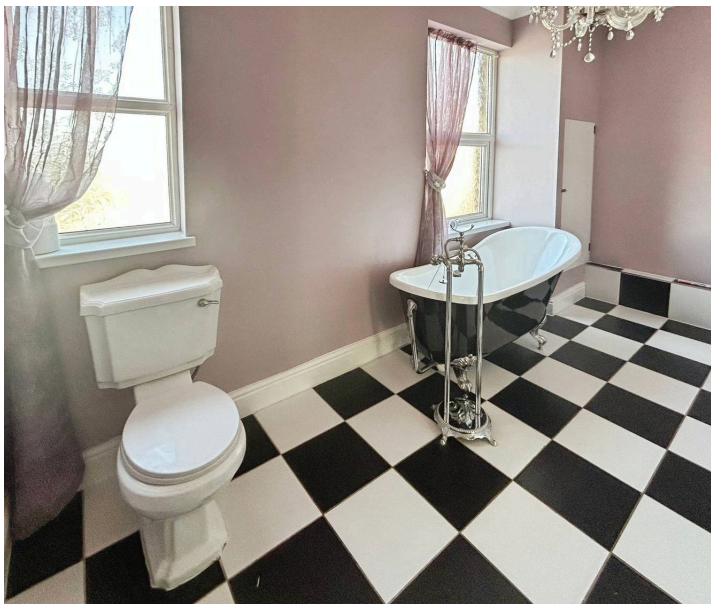
3.92m x 5.13m (12' 10" x 16' 10") Emulsioned and coved ceiling. Pendant and ceiling rose. Emulsioned walls. Radiator. Fitted carpet. Laminate hearth and marble fire surround. Front facing PVCu double glazed bay window with net curtain.

Reception 2

3.32m x 4.97m (10' 11" x 16' 4") Stippled ceiling with original coving. Ceiling rose. Emulsioned walls. Radiator. Fitted carpet. Rear facing PVCu double glazed bay window.

Reception 3/Breakfast Room

3.19m x 3.35m (10' 6" x 11' 0") Papered ceiling. Two pendant lights. Papered walls with on feature painted brick wall. Ceramic floor tiles. Radiator. Rear facing PVCu double glazed window with net curtain. Built in storage cupboard. Room is fitted with a range of painted storage units. Painted brick and wood breakfast bar.



Kitchen

2.11m x 2.17m (6' 11" x 7' 1") Painted beam ceiling. Pendant light. Emulsioned walls with tiles to splash back areas. Ceramic floor tiles. Room is fitted with a range of painted floor and wall cupboards with complementary work tops. White ceramic sink and drainer. Under counter space and plumbing for automatic washing machine. Under counter space for further appliance. Space for upright fridge freezer. Rear facing PVCu double glazed window. Half double glazed PVCu door leading to rear garden.



First Floor Landing

Via stairs with fitted carpet. Stippled ceiling. Pendant light. Emulsioned walls. Fitted carpet. Doors leading off. Door with stairs leading to loft. The loft has velux

First Floor Landing

Via stairs with fitted carpet. Stippled ceiling. Pendant light. Emulsioned walls. Fitted carpet. Doors leading off. Door with stairs leading to loft. The loft has velux window.

Bedroom 1

4.01m x 4.60m (13' 2" x 15' 1") Stippled ceiling with original coving. Pendant light. Emulsioned walls with a feature papered wall. Radiator. Fitted carpet. Front facing PVCu double glazed bay window with net curtain.

Bedroom 2

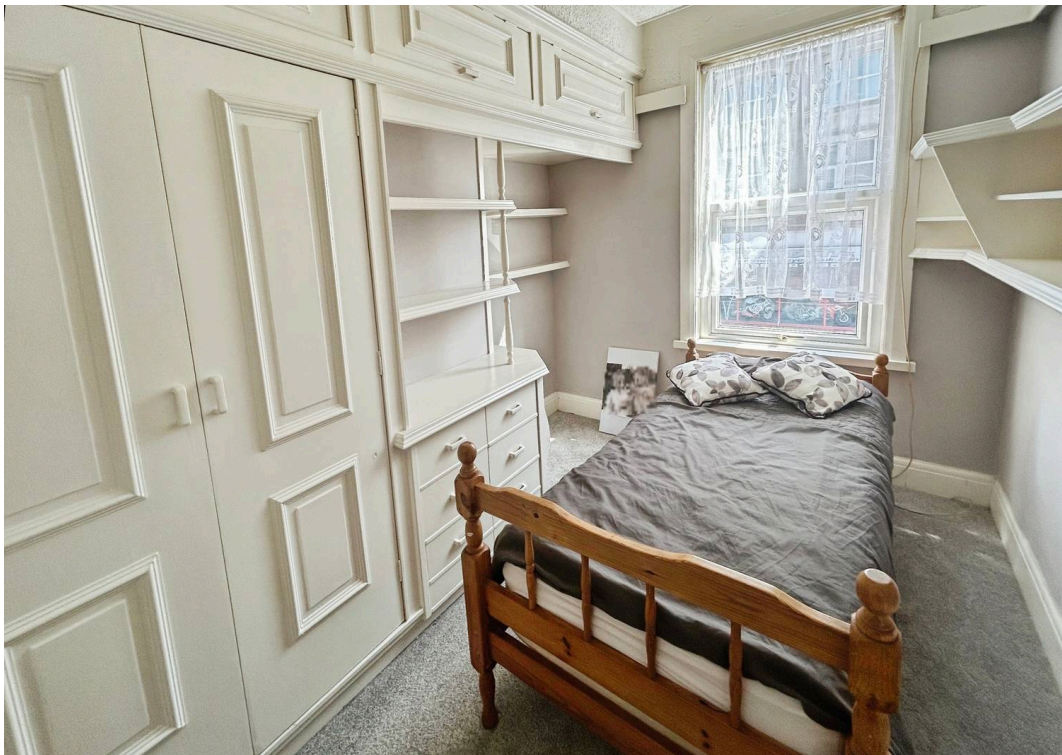
2.85m x 4.00m (9' 4" x 13' 1") Stippled ceiling with beams. Pendant light. Emulsioned walls with one feature papered wall. Radiator. Fitted carpet. Across one wall is a range of built in storage. Rear facing PVCu double glazed window.

Bedroom 3

2.68m x 3.37m (8' 10" x 11' 1") Stippled ceiling. Papered walls. Radiator. Fitted carpet. Front facing PVCu double glazed window with net curtain. Across one wall a range of wooden built in storage.

Family Bathroom

2.18m x 4.00m (7' 2" x 13' 1") Emulsioned ceiling with coving. Ceiling rose and pendant light. Emulsioned walls. Floor mounted radiator with heated towel rail. Ceramic floor tiles. Two rear facing frosted PVCu double glazed windows. Built in storage cupboard housing gas fired combination boiler. Room is fitted with a three piece suite comprising pedestal wash hand basin, W.C. and free standing claw feet bath with freestanding tap and shower head attachment.



Payton
Jewell
Caines



Payton Jewell Caines

Payton Jewell Caines, 53 Station Road – SA13 1NW

01639891268 • porttalbot@pjchomes.co.uk • pjchomes.co.uk/

These property details are provided as a general guide only. Whilst we aim for accuracy, measurements, photographs, floor plans, and descriptions should not be relied upon as statements of fact. Buyers should carry out their own checks regarding the property, services, and specifications. Fixtures and fittings are only included if specifically stated. Appliances and services have not been tested.