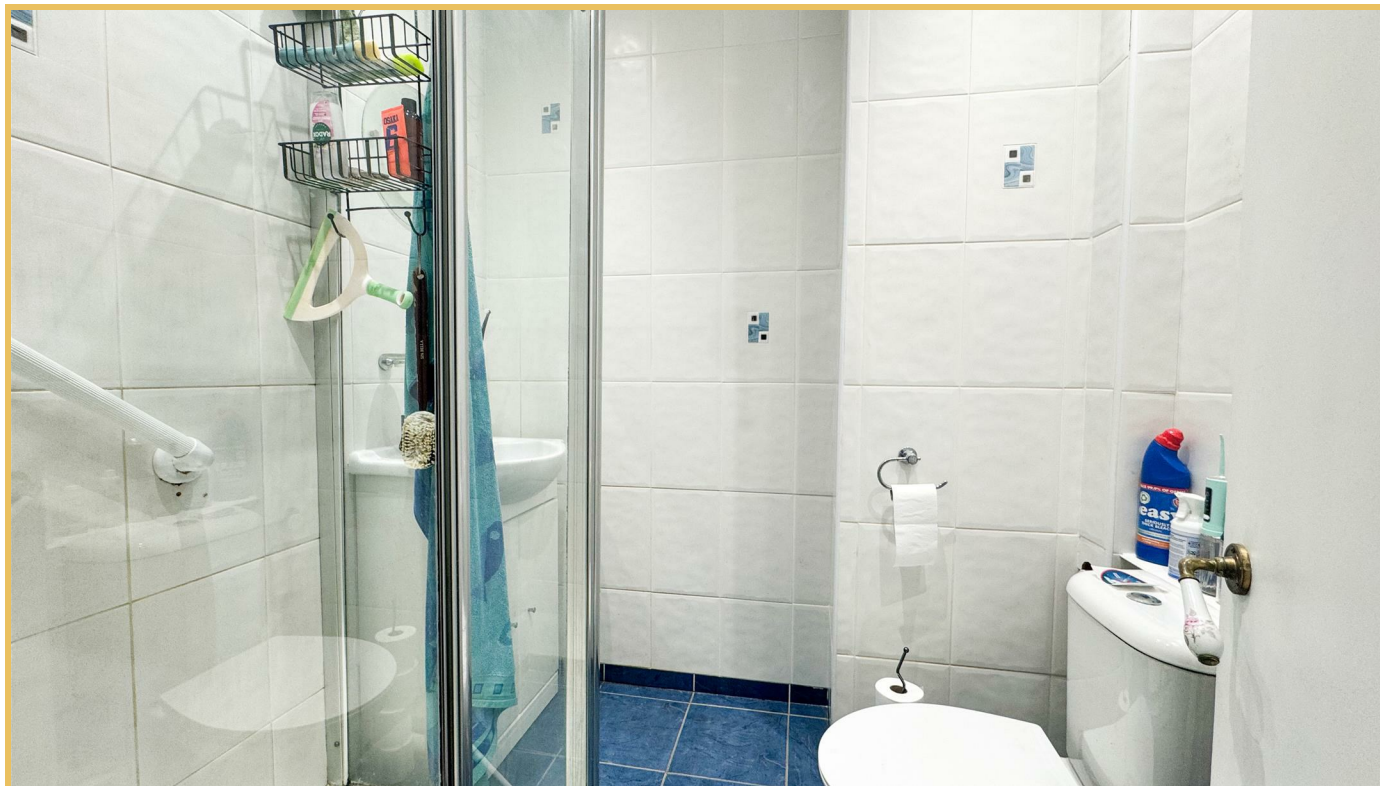




Royal Terrace , Southend-on-Sea SS1 1DX

- TOP FLOOR APARTMENT
 - ESTUARY VIEWS
- MOMENTS FROM SOUTHEND TOWN CENTRE
 - LARGE LIVING ROOM
- ONE DOUBLE BEDROOM
 - PERIOD FEATURES
 - LOW CHARGES
- SHARE OF FREEHOLD AND LONG LEASE

Guide Price £175,000 Leasehold - Share of



Location

Marie Corbyn Dad.

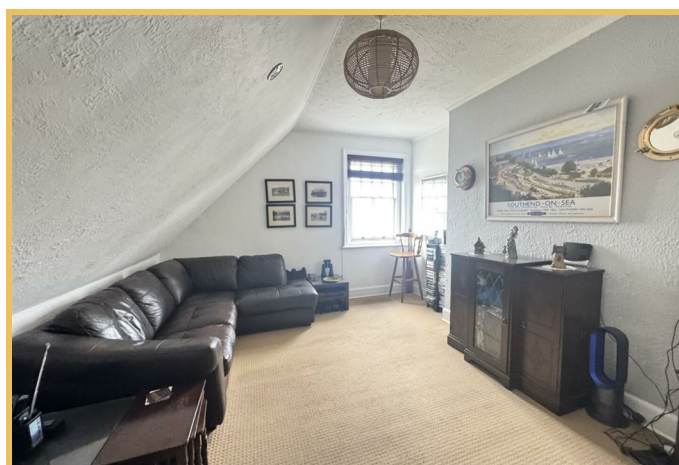
Hair & Son are happy to present this fabulous and quirky one bedroom top floor apartment in the Clifftown conservation area situated on the clifftops of Royal Terrace, which is located within moments of Southend town centre and Southend seafront with all of its amenities including shops, eateries and bars and within walking to Southend Central Station with direct links to London.

The property comprises of an entrance hall that provides access to all rooms within the property, that includes a good sized living room which provides views towards the estuary, a fitted kitchen with a built in oven and ample cupboard space. Further to the property you have a three piece bathroom with wash hand basin, shower cubicle and a low level w/c, and lastly a double bedroom with fitted wardrobes.

The property has the benefit of having a share of freehold and a long lease.

COMMUNAL HALL

ENTRANCE HALL



LIVING ROOM

15'2" x 11'9"

KITCHEN

11'0" x 7'3"

INNER HALLWAY**BATHROOM**

6'2" x 5'5"

BEDROOM

11'0" x 8'7"

TENURE

SHARE OF FREEHOLD

LEASE - 151 YEARS REMAINING

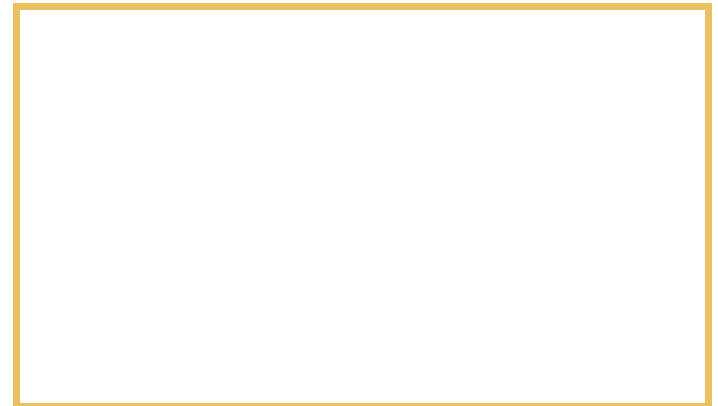
SERVICE CHARGE (PER ANNUM) - £327.99

MONTHLY MANAGEMENT FEE - £23 PER MONTH

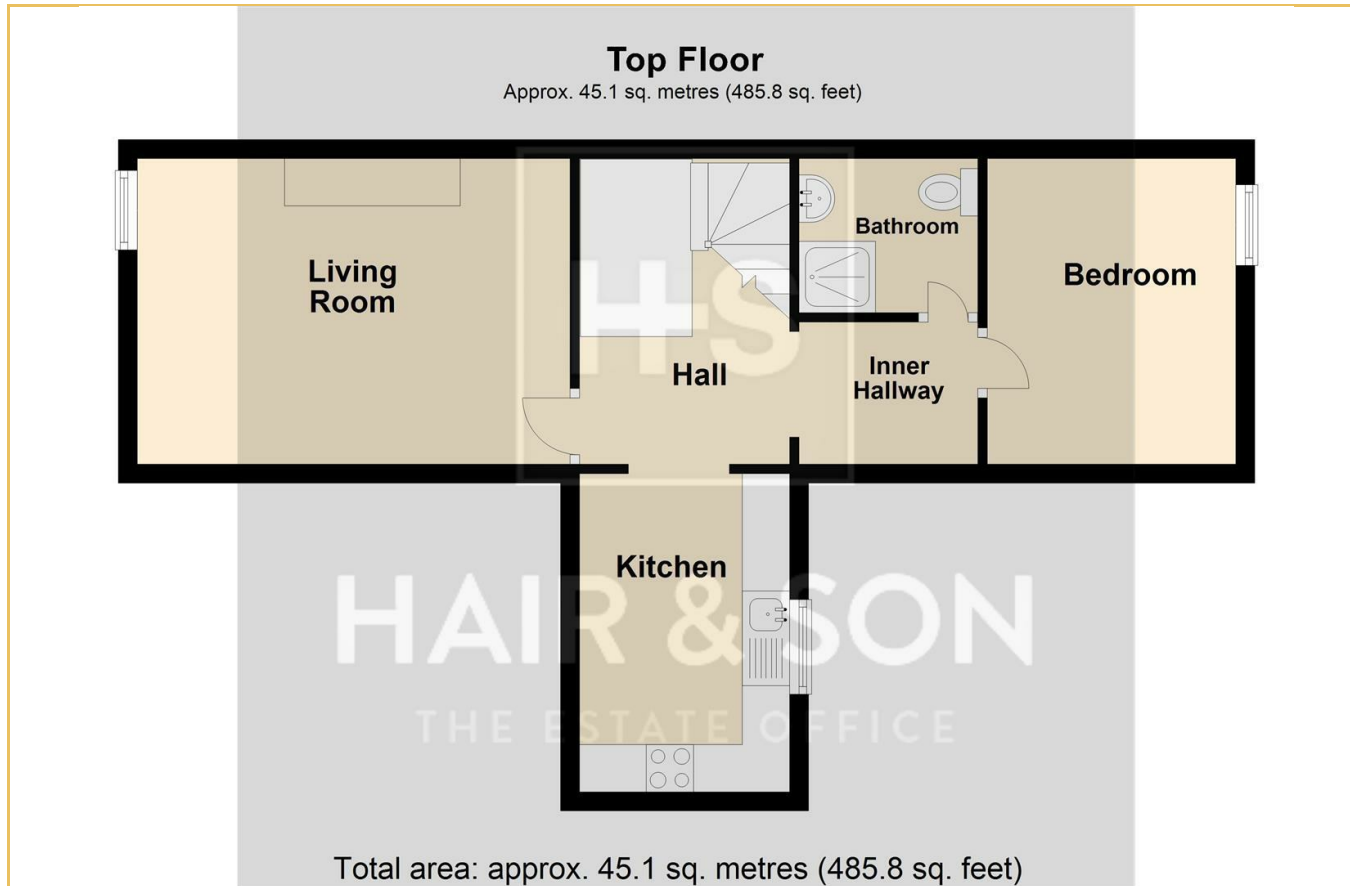
COUNCIL TAX BAND - A

EPC RATING - D

These particulars are accurate to the best of our knowledge but do not constitute an offer or contract. Photos are for representation only and do not imply the inclusion of fixtures and fittings. The floor plans are not to scale and only provide an indication of the layout.



Local Authority **Southend on Sea Borough Council**
Council Tax Band **A**
EPC Rating **D**



Sales Office
190 London Road
Southend-On-Sea
Essex
SS1 1PJ

Contact
01702 34 11 77
<https://hairandson.co.uk/>

Agents Note: Whilst every care has been taken to prepare these particulars, they are for guidance purposes only. All measurements are approximate and for general guidance purposes only and whilst every care has been taken to ensure accuracy, they should not be relied upon and potential buyers/tenants are advised to recheck the measurements.

