

## Lakeside Drive, NW10

### £595,000

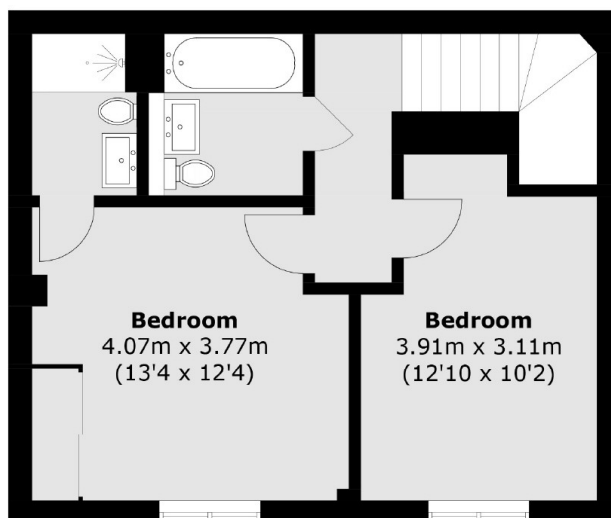
A beautifully presented two bedroom split level maisonette with a private entrance and terrace. The property benefits from an open plan kitchen living area with a pantry, floor to ceiling windows, abundance of storage along with a downstairs WC. On the first floor there are two double bedrooms with an en-suite to the master bedroom along with a family bathroom.

Viscount House is only moments from the A40 as well as great links to Central London via Park Royal (Piccadilly Line) and Hanger Lane (Central Line) Underground stations.

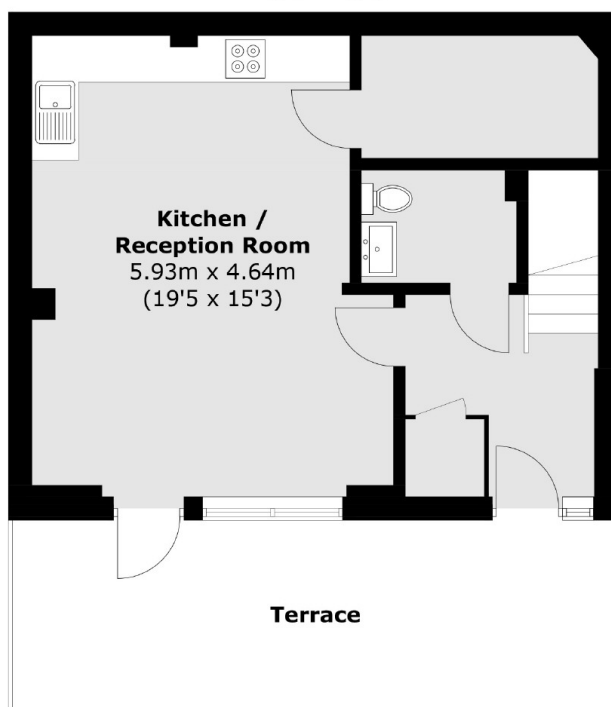
### Features

Maisonette  
Two Bedrooms  
Two Bathrooms  
Bright Reception Room  
Over 930 Square Feet  
Open Plan

Lakeside Drive,  
London, NW10



### First Floor



### Ground Floor

Total area (approx.): 86.8 sq. m (934.2 sq. ft)  
Terrace : 18.9 sq. m (203.4 sq. ft)

**Dexters**

Acton  
171 High Street  
London  
W3 6LP  
Sales  
020 8896 2112

Energy Rating: B. We aim to make our particulars both accurate and reliable. However they are not guaranteed; nor do they form part of an offer or contract. If you require clarification on any points then please contact us, especially if you're traveling some distance to view. Please note that appliances and heating systems have not been tested and therefore no warranties can be given as to their good working order.

 **RICS** | Regulated  
Estate Agent  
and Letting Agent

[dexters.co.uk](http://dexters.co.uk)