

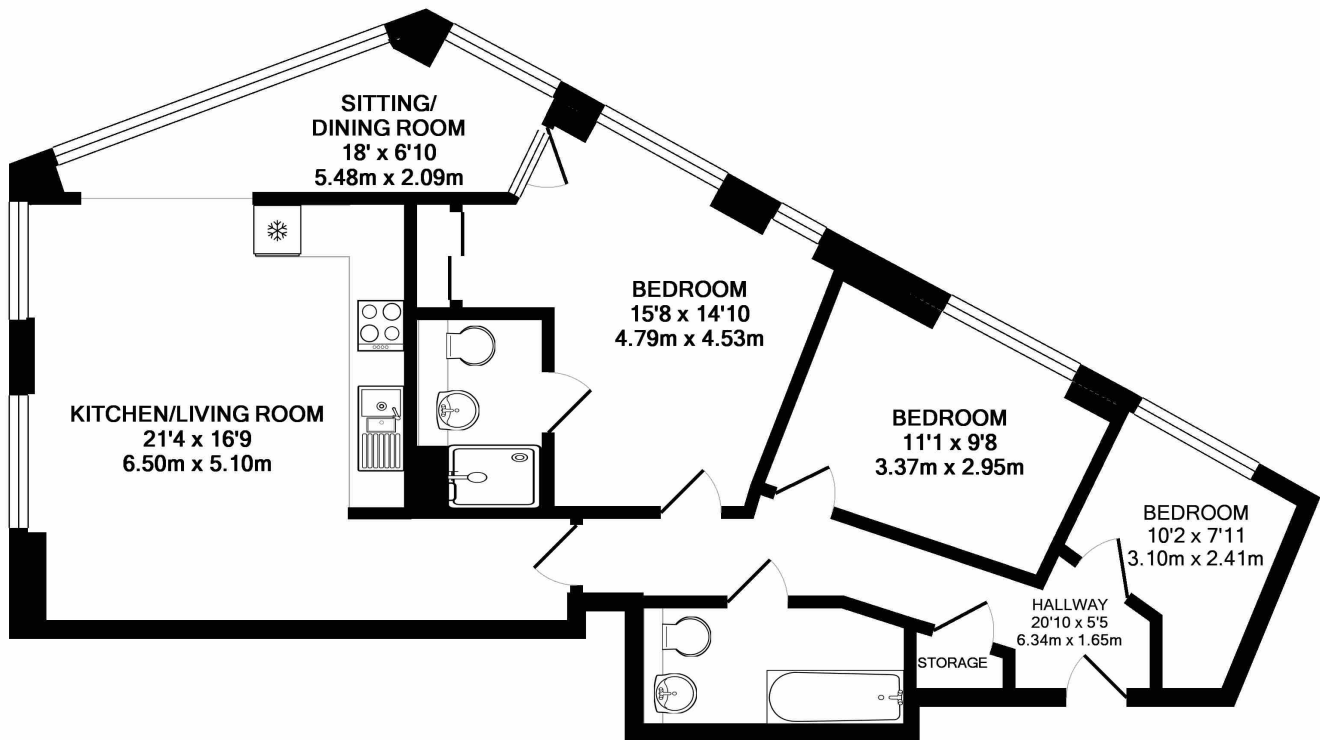


HIGH STREET, E15

£2,400 pcm

Two bedroom two bathroom apartment with additional study room offering 841 sq ft of living space, floor to ceiling windows, far reaching city views and a fully integrated kitchen. Residents benefit from 24 hour concierge and residents gym. Located close to Pudding Mill Lane DLR and Bromley by Bow Station with easy access to Stratford and the Queen Elizabeth

- Two Bedroom
- Two Bathroom
- 841 Sq.Ft
- 21st Floor
- Study
- Residents Gym



TOTAL APPROX. FLOOR AREA 841 SQ.FT. (78.2 SQ.M.)

Whilst every attempt has been made to ensure the accuracy of the floor plan contained here, measurements of doors, windows, rooms and any other items are approximate and no responsibility is taken for any error, omission, or mis-statement. This plan is for illustrative purposes only and should be used as such by any prospective purchaser. The services, systems and appliances shown have not been tested and no guarantee as to their operability or efficiency can be given
Made with Metropix ©2017



LiFE RESIDENTIAL

16 Royal Crest Avenue,
London, E16 2TQ
Sales: 020 3846 3332
Lettings: 020 3846 3311

Energy Rating: B. We aim to make our particulars both accurate and reliable. However they are not guaranteed; nor do they form part of an offer or contract. If you require clarification on any points then please contact us, especially if you're traveling some distance to view. Please note that appliances and heating systems have not been tested and therefore no warranties can be given as to their good working order.