



Guide Price £220,000 - £235,000

Brunel Mews Solsbro
Road, Torquay, TQ2
6QA

Occupying a level position and convenient location for Torquay seafront and transport links is this two bedroom purpose built flat. The accommodation consists of two bedrooms, one with ensuite, bathroom, kitchen and spacious lounge/diner with balcony from lounge enjoying open sea views over towards Torquay Harbour. The property is now in need of modernisation but offers spacious accommodation. Outside to the front of the building is residents and visitors parking.



Door into hallway.

HALLWAY Two storage cupboards.

LOUNGE/DINER A very spacious lounge/diner area, three windows to the front with sea views, attractive fireplace, doors out to balcony with sea views over to Torquay Harbour.

KITCHEN Drawers and cupboards over and under surfaces, built in oven, space for fridge/freezer, plumbing for washing machine, glass window through to lounge.



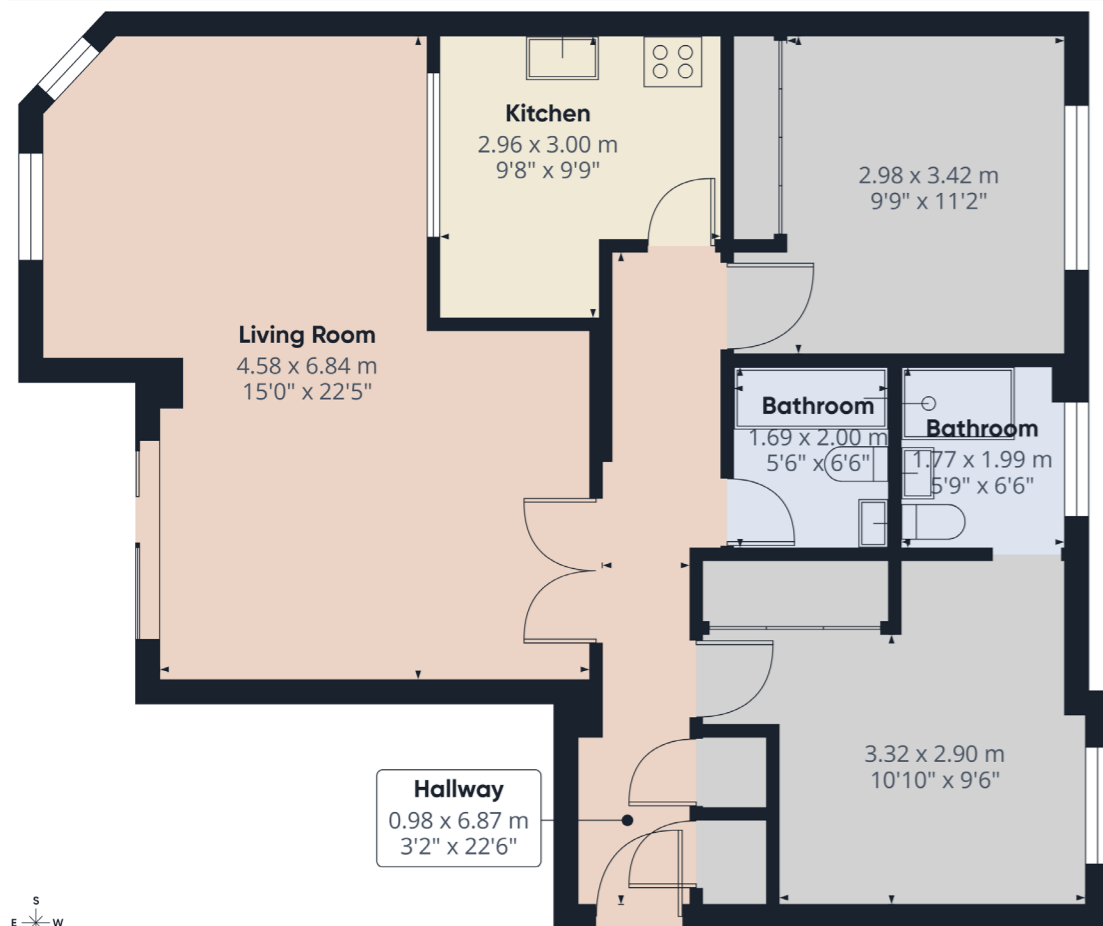
BATHROOM Bath with overhead shower, low level WC and wash hand basin.

BEDROOM ONE Built in storage and window to side.

ENSUITE Modern style comprising double shower, wash hand basin, low level WC and window to side.

BEDROOM TWO Double bedroom with built in wardrobes and window to back.

OUTSIDE Balcony with sea views over Torquay Harbour. Parking for residents and visitors.



Address 'Brunel Mews Solsbro Road, Torquay, TQ2 6QA'

Tenure 'Leasehold'

Council Tax Band 'D'

EPC Rating 'TBC'

Taylor's Estate Agents
256 Torquay Road
Paignton
TQ3 2EZ