



Berwick Street, Soho, W1F
£575 pw

› 2 Bedrooms › 2 Bathroom › Unfurnished

TAVISTOCKBOW
RESIDENTIAL



- > Two bedrooms
- > Two bathrooms
- > Fourth floor (walk up)
- > Seperate study
- > Two doubles one single bedroom
- > Unfurnished
- > Central Soho
- > Moments from Kingly Court
- > Short walk to Tottenham Court Road and Oxford Circus stations
- > Available immediately

A well presented two bedroom (with study) two bathroom apartment to rent in the centre of Soho. This spacious property offers two large double bedrooms and one single bedroom, with ample built in storage and has a balcony. There is a large open plan living space ideal for working from home. Located on the popular

Berwick Street, you are spoilt for choice with the number of bars and restaurants available. Available immediately on an unfurnished basis.





WHAT WE LOVE

Terrace
Plethora of restaurants
Quiet environment
Wood floors
Fresh fruit market nearby.

WHAT YOU NEED TO KNOW

Open plan kitchen
Top floor
Walk up
Three bedrooms (two doubles, one single)
Washer/Dryer.



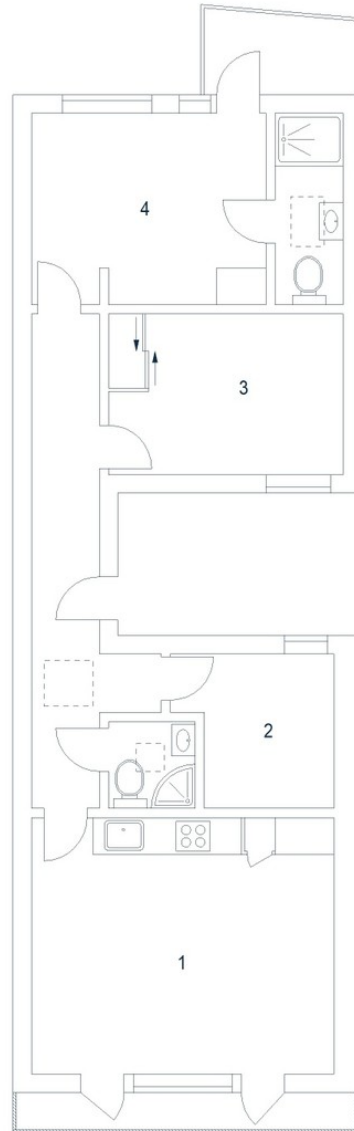
Floorplan

Berwick Street, W1

Approximate Gross Internal Area 66 sq m / 710 sq ft

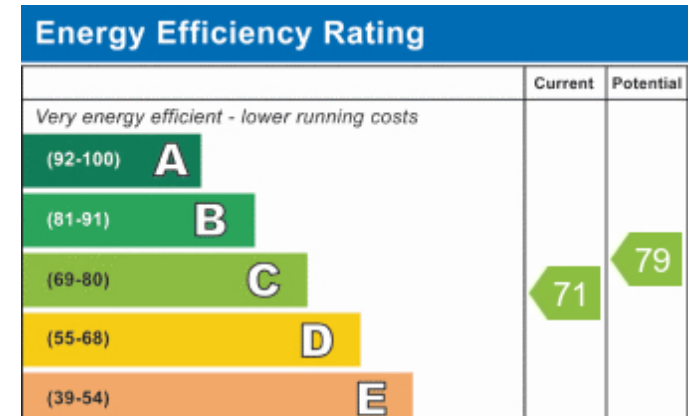
Fourth Floor

- 1 Kitchen / Reception Room
4.89 x 4.14M
16'1" x 13'7"
- 2 Bedroom
2.64 x 2.52M
8'8" x 8'3"
- 3 Bedroom
3.84 x 2.61M
12'7" x 8'7"
- 4 Bedroom
3.80 x 3.11M
12'6" x 10'2"



Floor Plan produced for Tavistock Bow by Mays Floorplans © - Tel 020 3397 4594
Illustration for identification purposes only, not to scale.

EPC






About Us

Tavistock Bow is an independent residential agency based in Covent Garden. We are niche, boutique, creative, knowledgeable, professional and approachable. We love what we do and that's why we do it.

Contact Us

- a.** 31 Long Acre, London, WC2E 9LA
- t.** 020 7477 2177
- e.** hello@tavistockbow.com
- w.** tavistockbow.com

-  /tavistockbow
-  /tavistockbow
-  @tavistockbow



TAVISTOCKBOW
RESIDENTIAL