



## Wellington Way, E3

£325,000

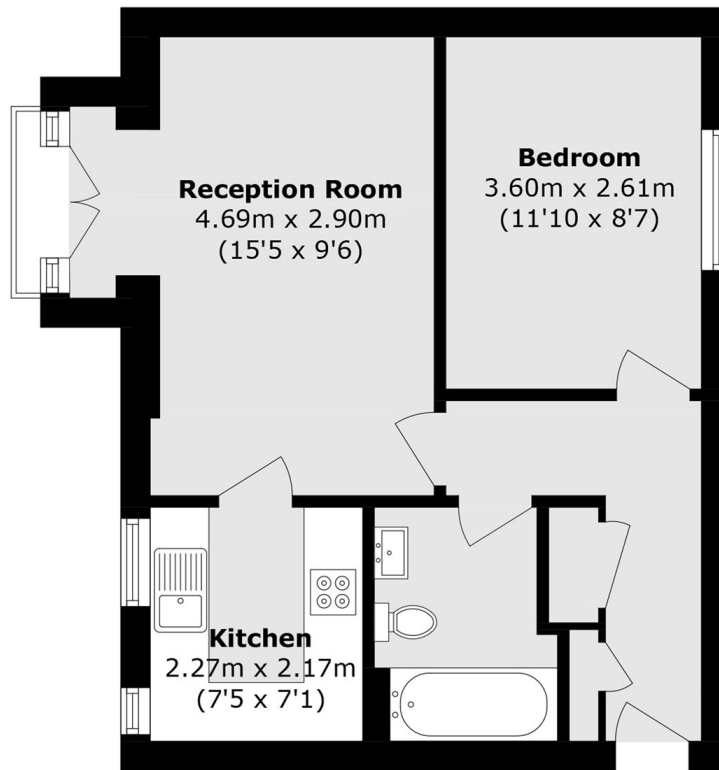
A One double bedroom apartment located on the second floor of a secure purpose built block overlooking picturesque green space. This property measures in excess of 453 square feet, has a recently renovated kitchen and a Juliette balcony.

Located opposite Archibald park this property has an abundance of green space close by. There are multiple transport links within a quarter of a mile with Bow road, Bow Church and Devons Road close by.

### Features

- Second Floor
- Modern Kitchen
- Over 453 Square Feet
- Semi - Open Plan
- Secure Building
- Overlooking Green Spaces

# Wellington Way, London, E3



## Second Floor

Total area (approx.): 42.1 sq. m (453.2 sq. ft)