



FENTIMAN ROAD, SW8

£500,000

Two bedroom ground floor flat situated in a period-style house located in Vauxhall. The property comprises of two well proportioned bedrooms, each offering comfortable accommodation with good storage potential. A modern family bathroom serves the flat, finished in a clean and neutral style.

- Two Bedrooms
- Period Style
- 631 Sq Ft
- Ground Floor
- Transport Links
- EPC: E

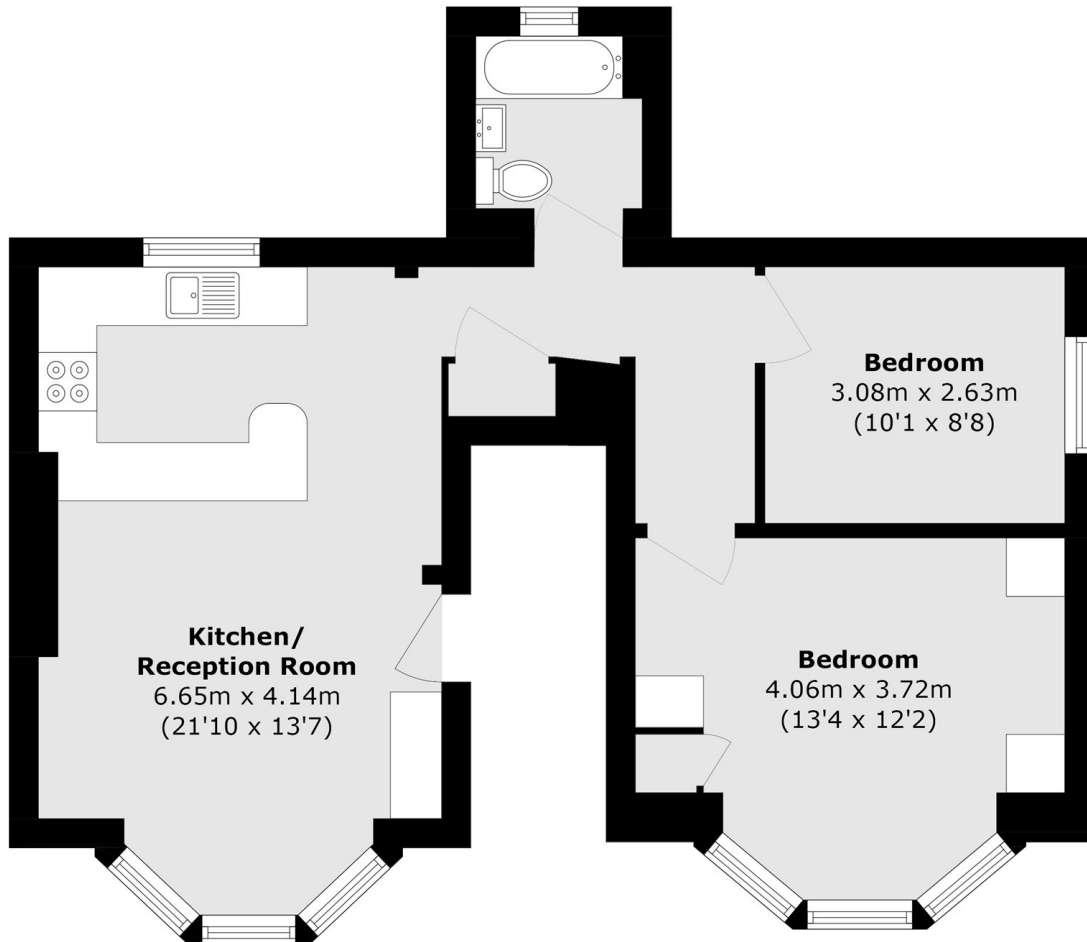


ABOUT THE HOME

The apartment is well positioned for access to local amenities and local green spaces making it ideal for professionals or couples. Conveniently located for access to Vauxhall Station (0.4 miles) & Oval Station (0.4 miles)







Total area (approx.): 58.7 sq. m (631.8 sq. ft)

LiFE RESIDENTIAL

11 Flagstaff House, London,
SW8 2LZ

Sales: 020 7476 1408

Lettings: 020 7582 7989

Energy Rating: E. We aim to make our particulars both accurate and reliable. However they are not guaranteed; nor do they form part of an offer or contract. If you require clarification on any points then please contact us, especially if you're traveling some distance to view. Please note that appliances and heating systems have not been tested and therefore no warranties can be given as to their good working order.