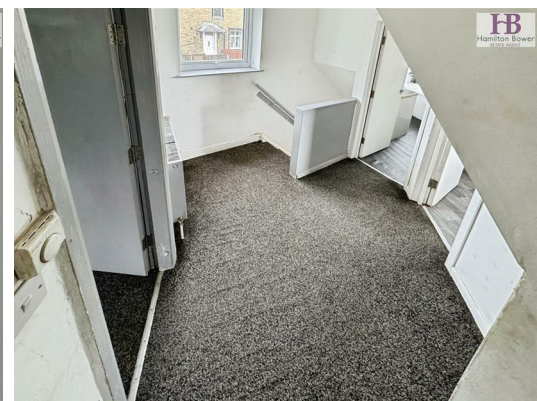




48B Cliffe Road, Bradford, BD3 0LZ
£550

Generously sized TWO BEDROOM flat located close to Bradford City Centre. The property offers living accommodation over two floors with modern fixtures and fittings throughout and benefits from a private entrance and a paved garden.



EPC RATING - TBC

COUNCIL TAX BAND - A

ENTRANCE

Ground floor entrance with stairs up to the flat.

FIRST FLOOR

HALLWAY

Spacious hallway with stairs to the second floor, a double glazed window and a central heating radiator.

LOUNGE

With a double glazed window and a central heating radiator.

KITCHEN

Fitted wall and base units to two sides with a contrasting work surface over incorporating a stainless steel sink and mixer tap. Integrated electric oven with hob and extractor over. Double glazed window, central heating radiator and ample space for a dining table.

BATHROOM

Modern fitted three piece suite in white with shower over bath. Double glazed window and a central heating radiator.

SECOND FLOOR

BEDROOM

Double bedroom with a Velux window and a central heating radiator.

BEDROOM

Double bedroom with a Velux window and a central heating radiator.

EXTERNAL

Paved yard to rear.

