

HARRY CHARLES

Property Specialists



Mead Way, Bushey, WD23 2DJ

Price £710,000

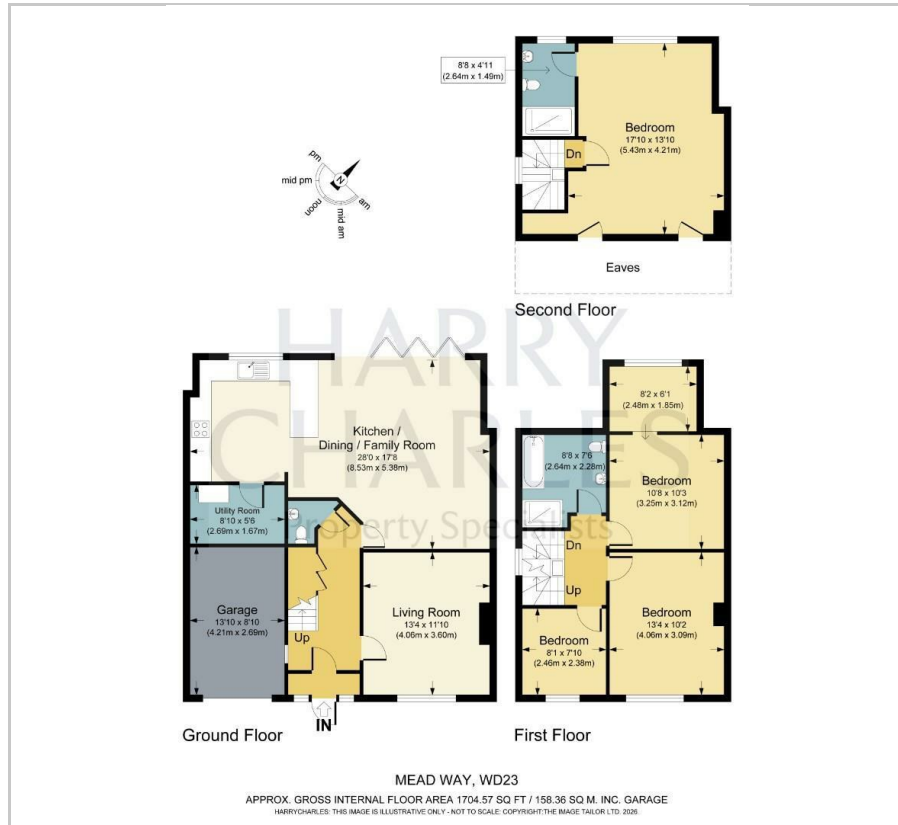


**** EXTENDED FOUR BEDROOM SEMI-DETACHED FAMILY HOME - DOUBLE STOREY REAR EXTENSION & LOFT CONVERSION - BRIGHT & SPACIOUS KITCHEN/FAMILY ROOM - SITTING ROOM - MASTER BEDROOM AND EN-SUITE SHOWER TO LOFT AREA - 3 DOUBLE BEDROOMS - COUNCIL TAX BAND E - GARAGE - DRIVEWAY TO FRONT **** We are delighted to be favoured with Sole agency instructions to offer for sale this extended and well presented semi-detached home situated in the sought after location of Bushey. The property benefits from a double storey extension to the rear providing a large kitchen/Family area and the loft has also been converted to provide the master bedroom with en-suite shower room. There is an attractive garden to the rear and a driveway to the front providing ample off road parking. In order to avoid disappointment please contact us without delay to arrange an early appointment to view.

- Extended Semi-Detached Family Home
- Master Bedroom with En-suite
- Bright & Spacious Kitchen/Family room
- Council Tax Band E
- Attractive Rear Garden
- Double storey rear extension
- 3 Double Bedrooms
- Family Bathroom room
- Garage & Driveway



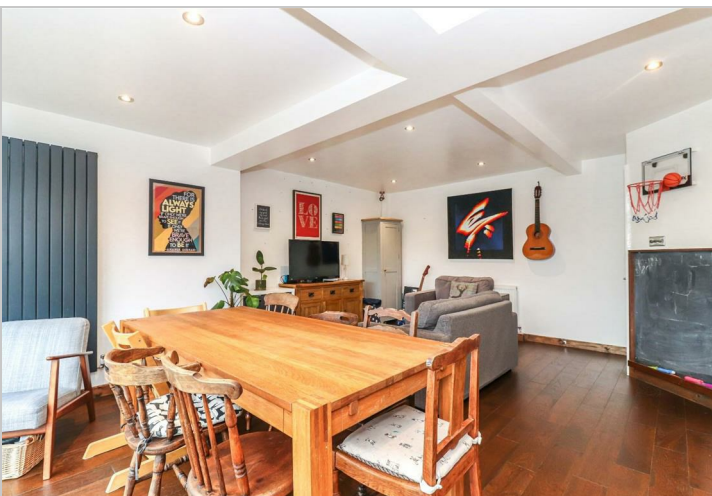
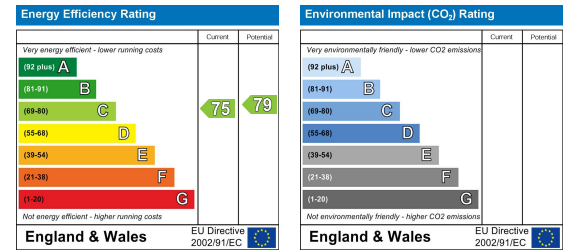
Floor Plan



Area Map



Energy Efficiency Graph



These particulars, whilst believed to be accurate are set out as a general outline only for guidance and do not constitute any part of an offer or contract. Intending purchasers should not rely on them as statements of representation of fact, but must satisfy themselves by inspection or otherwise as to their accuracy. No person in this firm's employment has the authority to make or give any representation or warranty in respect of the property.