



Connells

Stephens Court Middlebridge Street
Romsey



Property Description

Located in the heart of Romsey, this purpose-built two-bedroom apartment offers bright and airy accommodation on the first floor. The property features a spacious south-facing lounge with balcony access, open plan kitchen with integrated NEF oven and Lamona hob, and two well-proportioned double bedrooms. The shower room has been updated and benefits from a recently installed hot water tank (December 2024). Additional benefits include a garage, off-road parking, communal gardens with private washing lines, and a secure storage unit. Set within a well-maintained block with a communal entrance hall, the property is offered without chain and is subject to probate (applied for in February). An ideal first-time buy or investment, just minutes from Romsey town centre.

Location Description

Stephens Court is ideally located on Middlebridge Street, just a flat and scenic seven-minute stroll to the centre of Romsey. The area is a quiet residential spot yet close to all key amenities including independent shops, Waitrose, cafés, and Romsey train station with connections to Southampton and Salisbury. The apartment's positioning benefits from tree-lined views and access to well-maintained communal gardens, making it a peaceful yet central location.

Communal Entrance Hall

Secure communal access with stairs rising to the first floor.

Private Entrance Hall

Welcoming entrance with neutral décor and internal doors to living areas and bedrooms.

Lounge

South-facing with tree views and excellent natural light, double-glazed window, door to balcony, two new electric heaters, new carpets to be laid. Open to:

Kitchen

Front aspect window, wide range of wall and base units, integrated NEF oven, Lamona induction hob, extractor, integrated fridge-freezer, space for washing machine, roll-top work surfaces, localised tiling, stainless steel sink with drainer and mixer tap, tiled floor.

Landing

Small landing with carpet and built-in storage cupboard.

Bedroom One

Double-glazed window to rear, two built-in wardrobes, new carpet, electric heater.

Bedroom Two

Further double room with double-glazed window to side and electric heater.

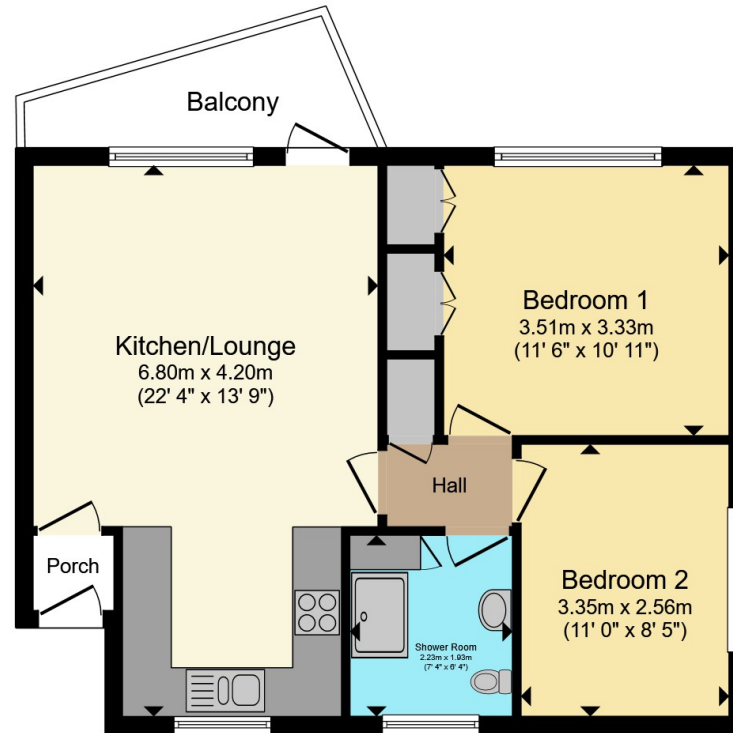
Shower Room

Recently installed tank (Dec 2024) housed in built-in cupboard, shower cubicle, WC, hand wash basin, wood laminate flooring, obscured window to front.









Total floor area 55.4 m² (596 sq.ft.) approx

This floor plan is for illustrative purposes only. It is not drawn to scale. Any measurements, floor areas (including any total floor area), openings and orientation are approximate. No details are guaranteed, they cannot be relied upon for any purpose and they do not form part of any agreement. No liability is taken for any error, omission or misstatement. A party must rely upon its own inspection(s). Powered by www.propertybox.io



To view this property please contact Connells on

T 01794 830 833
E romsey@connells.co.uk

13a The Hundred
 ROMSEY SO51 8GD

EPC Rating: E Council Tax
 Band: B

Service Charge: Ask
 Agent

Ground Rent:
 2623.00

Tenure: Leasehold

view this property online connells.co.uk/Property/ROM306711

This is a Leasehold property with details as follows; Term of Lease 999 years from 30 Jun 1967. Should you require further information please contact the branch. Please Note additional fees could be incurred for items such as

1. MONEY LAUNDERING REGULATIONS Intending purchasers will be asked to produce identification documentation at a later stage and we would ask for your co-operation in order that there will be no delay in agreeing the sale. 2. These particulars do not constitute part or all of an offer or contract. 3. The measurements indicated are supplied for guidance only and as such must be considered incorrect. Potential buyers are advised to recheck measurements before committing to any expense. 4. We have not tested any apparatus, equipment, fixtures, fittings or services and it is in the buyers interest to check the working condition of any appliances.

Connells Residential is registered in England and Wales under company number 1489613, Registered Office is Cumbria House, 16-20 Hockliffe Street, Leighton Buzzard, Bedfordshire, LU7 1GN. VAT Registration Number is 500 2481 05.



See all our properties at www.connells.co.uk | www.rightmove.co.uk | www.zoopla.co.uk

Property Ref: ROM306711 - 0006