



**OVER 60?**

Secure this property  
for up to **59% less!**

**Guide Price**

**£235,000**

**Freehold**

2x  1x  1x 

**Bentley Close, Lords  
Wood, Chatham, Kent,  
ME5**

*Wards*  
Helping you move forwards





## Main features

- **Garage en-bloc**
- **Offered for sale with no forward chain**
- **Ideal first-time buy or buy-to-let investment**
- **Popular location**
- **A short drive to motorway connections to M2/M20**

## Accommodation

### GROUND FLOOR

Entrance Hall

Kitchen : 10'0 x 5'5 (3.05m x 1.65m)

Lounge/Diner: 15'9 x 11'11 (4.80m x 3.63m)

### FIRST FLOOR

Landing

Bedroom 1: 11'11 x 8'8 (3.63m x 2.64m)

Bedroom 2: 11'11 x 8'6 (3.63m x 2.59m)

Bathroom : 6'1 x 5'9 (1.86m x 1.75m)

### OUTSIDE

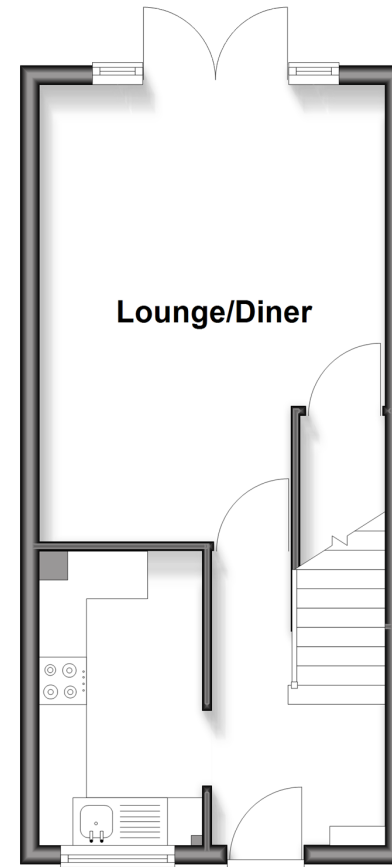
Front Garden

Rear Garden

Garage En Bloc

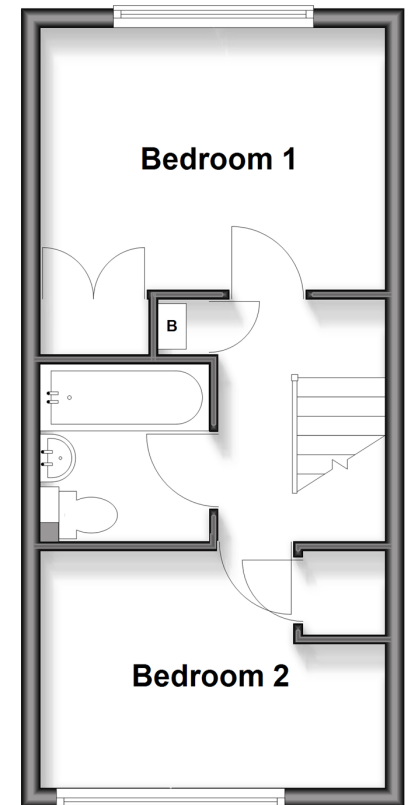
## Ground Floor

Approx. 29.3 sq. metres (314.9 sq. feet)



## First Floor

Approx. 29.3 sq. metres (314.9 sq. feet)



**Call Walderslade - 01634 865661 ■ [wardsofkent.co.uk](http://wardsofkent.co.uk)**

- Legal advice should be taken to verify fixtures/fittings, planning, alterations and/or lease details
- Appliances & services are untested, dimensions are approximate and floor plans are not to scale
- Through a Homewise Home For Life Plan people aged 60+ can secure this property for up to 50% less, by purchasing a Lifetime Lease.



12144669/20251106/ML/AJB