



Guide Price
£580,000

Freehold

5x  2x  1x 

**Churchfield Road,
Welling, Kent, DA16**

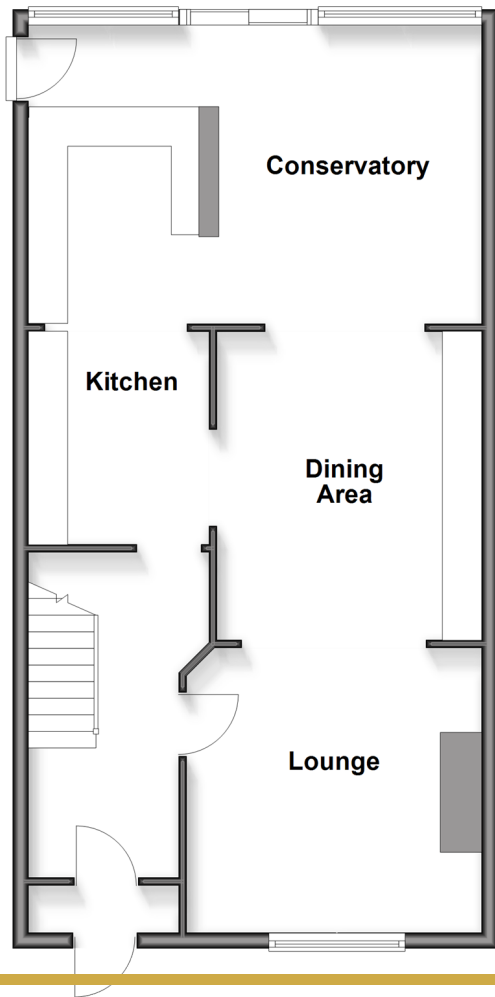
OVER 60?

Secure this property
for up to **59% less!**

Wards
Helping you move forwards

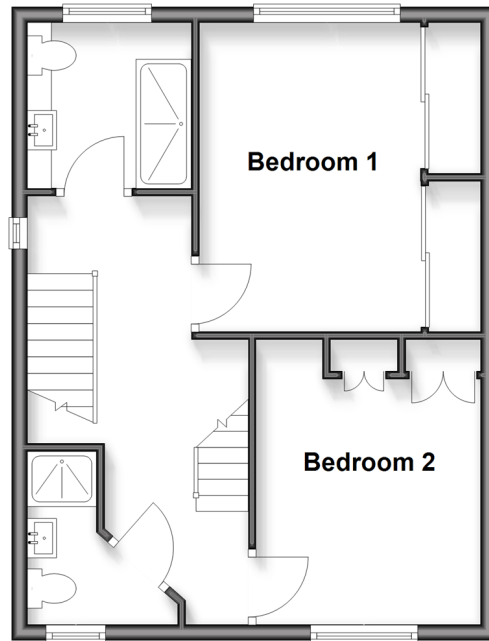
Ground Floor

Approx. 66.5 sq. metres (715.9 sq. feet)



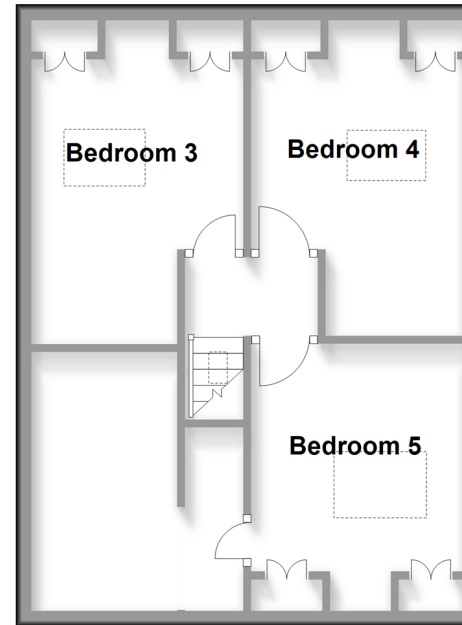
First Floor

Approx. 44.1 sq. metres (474.6 sq. feet)



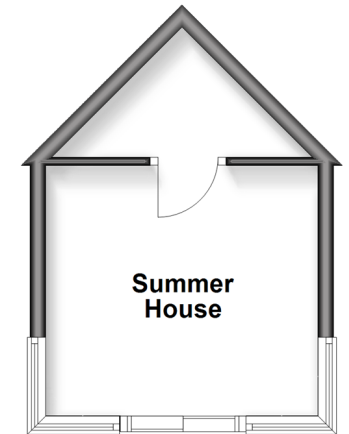
Second Floor

Approx. 41.2 sq. metres (443.0 sq. feet)



Outbuilding

Approx. 14.1 sq. metres (151.7 sq. feet)



Accommodation

GROUND FLOOR

Entrance Hall

Lounge/Diner: 25'7 x 11'9 (7.80m x 3.58m)

Kitchen: 22'7 x 6'7 (6.89m x 2.01m)

Conservatory: 18'2 x 12'1 (5.54m x 3.69m)

FIRST FLOOR

Landing

Shower Room

Bedroom 1: 13'0 x 8'9 up to fitted wardrobes (3.97m x 2.67m)

Bedroom 2: 12'8 x 8'4 (3.86m x 2.54m)

Shower Room

SECOND FLOOR

Landing

Bedroom 3: 12'8 x 8'4 (3.86m x 2.54m)

Bedroom 4: 11'0 x 8'8 (3.36m x 2.64m)

Bedroom 5: 10'2 x 9'3 up to bay (3.10m x 2.82m)

OUTSIDE

Front Garden

Rear Garden

OUT BUILDING

Summer House: 10'9 x 10'2 (3.28m x 3.10m)



Main features

- Unique detached period home
- Beautifully decorated throughout
- Stones throw to Welling train station
- Low maintenance rear garden
- Open plan living space



Nearest Schools


Primary Schools: St Stephen's Catholic Primary 0.3 miles, Hook Lane Primary 0.5 miles, East Wickham Junior School 0.8 miles

Secondary Schools: Welling School 0.7 miles, Bexley

Transport Information

Train Stations: Welling 0.5 miles, Bexleyheath 1.6 miles, Falconwood 1.8 miles

Underground Dagenham Heathway 5.8 miles, Upton Park 5.9 miles, New Cross 6.0 miles

 **Address** Skpton 4.1 miles, Pontoon Dock 4.2 miles, West Churchfield Road, Welling, Kent, DA16

Directions

For directions to this property please contact us.



Wards
Helping you move forwards

Call Welling Branch 020 8301 6679 ■ wardsofkent.co.uk



■ Through a Homewise Home For Life Plan people aged 60+ can secure this property for up to 59% less, by purchasing a Lifetime Lease

EPC RATING	CURRENT:	POTENTIAL:
	D(63)	C(75)

15009436/20260509/SM/LK