



Commercial Street, London E1

Price £485 per week - Furnished







Description

A stunning studio apartment in the Cityscape development.

This luxury studio apartment is situated on the 3rd floor and offers approximately 413 sq ft of living space with a southerly aspect. The spacious studio apartment boasts a well sized open plan living area with access to balcony, sleeping area with large fitted wardrobes, fully fitted kitchen with Siemens appliances and engineered stone worktops, contemporary bathroom with porcelain and glass tiling, wood flooring. The apartment benefits from floor to ceiling windows maximizing natural light and views.

The development is situated approximately 0.1 mile from Aldgate East Station and located in Zone 1. Residents also benefit from 24 hour concierge service, on site gymnasium and communal roof terrace with stunning panoramic views of the City Skyline and Canary Wharf.

Council tax band: D. Rent is payable on a monthly basis and you may be required to pay more than a month's rent in advance, depending on your circumstances. You will be required to pay a 1 week holding deposit following a successful offer. Tenancies with annual rents up to £50,000 will require a 5 weeks' security deposit, while those exceeding this threshold will require a 6 weeks' deposit. Utility bills, council tax, telephone line and broadband are not included in the rent. As well as paying the rent, you may also be required to make some additional permitted payments. If your tenancy does not qualify as an AST, additional fees may apply. Please visit jll.co.uk/fees for details of fees that may be payable when renting a property. To check broadband and mobile phone coverage please visit Ofcom here ofcom.org.uk/phones-telecoms-and-internet/advice-for-consumers/advice/ofcom-checker

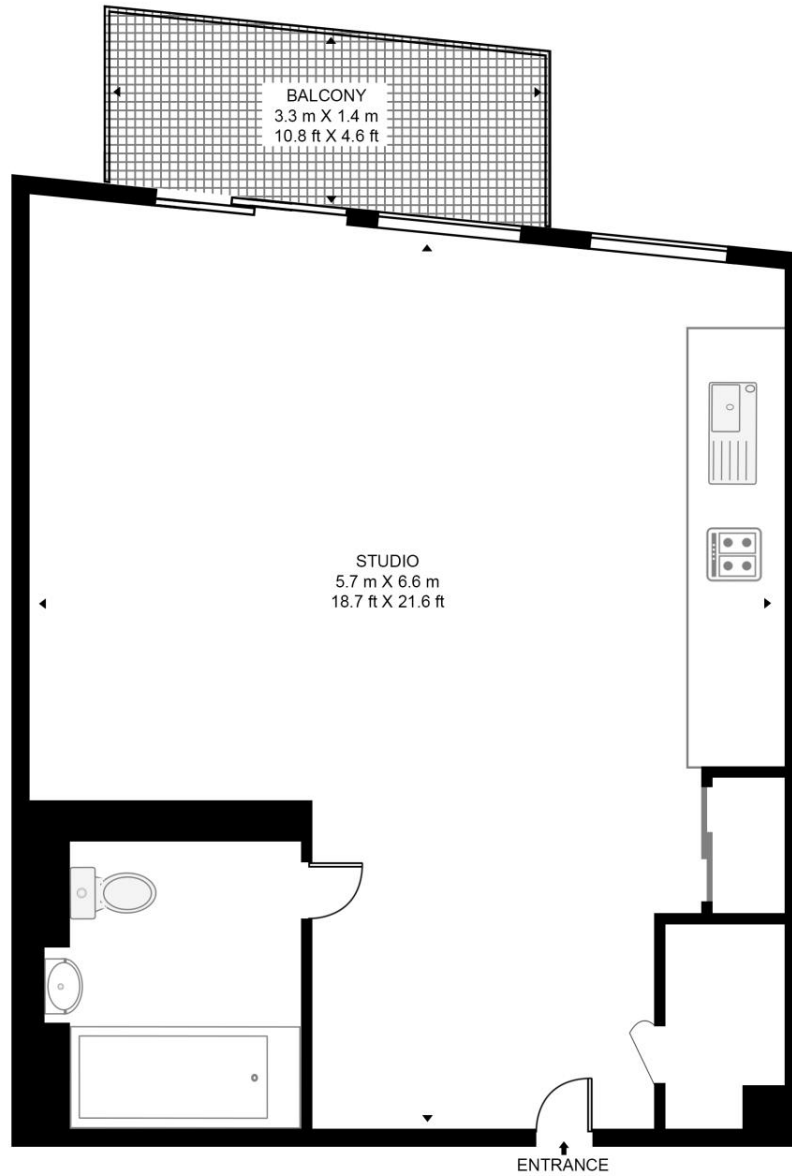
- Studio
- 1 Bathroom
- 3rd Floor
- Balcony
- High specification
- 24 hour concierge
- 0.1 mile from Aldgate Station
- Approx. 419 sq ft (38.9 sq m)
- Furnished
- EPC: B

Floorplan

419 sq ft | 39 sq m

KENSINGTON APARTMENTS

APPROXIMATE GROSS INTERNAL FLOOR AREA 419 SQ.FT (38.9 SQ.M)



THIRD FLOOR



This floor plan has been defined by the RICS Code of Measurement. This floor plan and all others are for approximate representative purposes only and upon usage is agreed to as such by the client.

WWW: hdvirtualart.com | TEL: 0203.974.1567 | EMAIL: info@hdvirtualart.com

City
25 Walbrook The Walbrook
Building,
London EC4N 8AF
+4420 7337 4000

Urban living, your way.

jll.co.uk/residential

© 2019 Jones Lang LaSalle IP, Inc. All rights reserved. All information contained herein is from sources deemed reliable; however, no representation or warranty is made to the accuracy thereof.

