

6 Hastingwood Park

Harlow, Essex

Guide Price £740,000



Nestled within a gated private cul-de-sac, this stylish four bedroom family home is a real beauty! Stunning inside and out, and just a short drive to Epping and Harlow town centres, there's much to love here.

Council Tax band: F

Tenure: Freehold

- Beautifully designed Scandinavian-style family home in an exclusive gated development
- Four double bedrooms
- Open plan living space
- Large driveway suitable for 4 vehicles
- Ensuite shower room
- Bespoke furnishings and units throughout the home
- Short drive to Epping station and high street
- Easy access to the M11



Entrance Hall

Lounge

11' 2" x 12' 11" (3.41m x 3.93m)

Study

11' 2" x 8' 2" (3.41m x 2.48m)

Open Plan Lounge / Kitchen / Diner

18' 4" x 21' 11" (5.60m x 6.69m)

WC

Primary Bedroom

12' 10" x 13' 0" (3.91m x 3.97m)

Ensuite Shower Room

Bedroom

11' 2" x 11' 6" (3.40m x 3.51m)

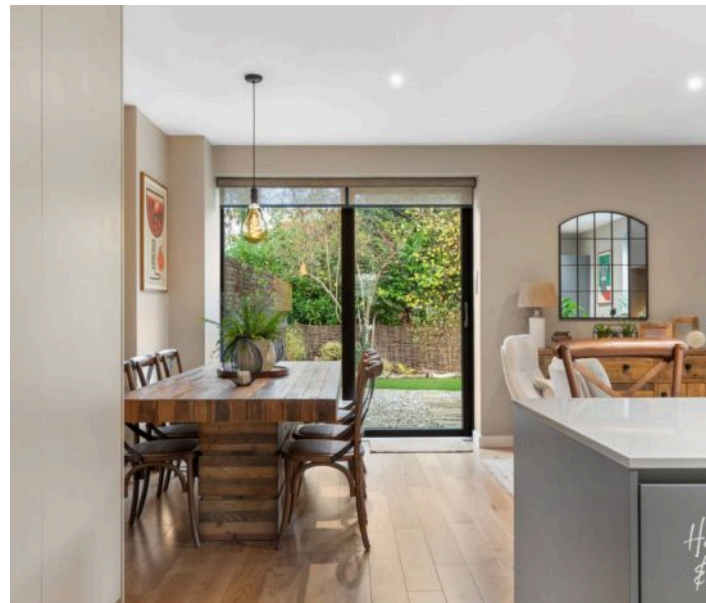
Bedroom

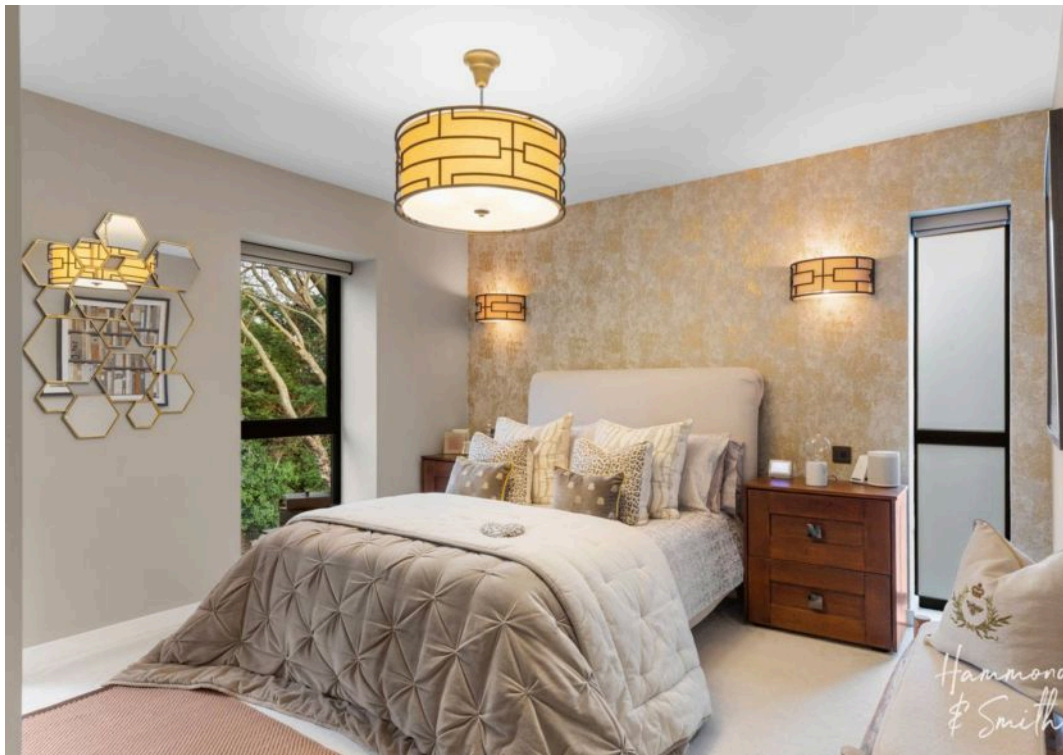
12' 4" x 7' 6" (3.76m x 2.29m)

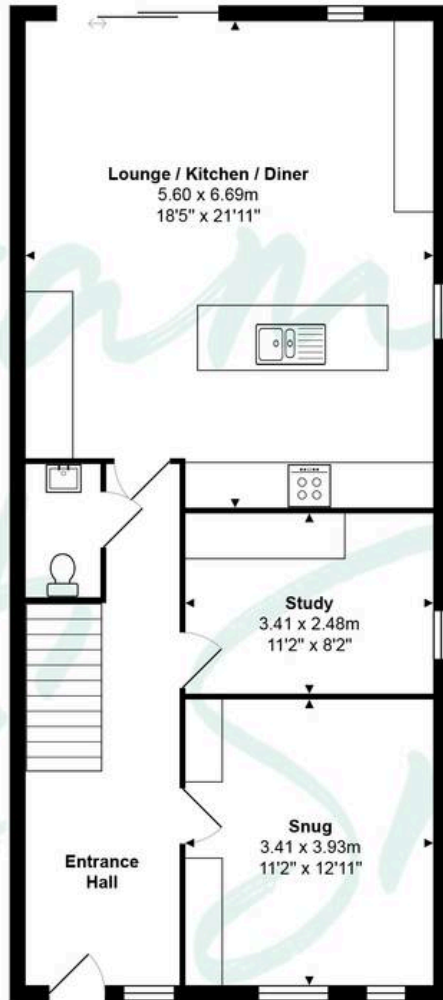
Bedroom

7' 8" x 11' 6" (2.33m x 3.51m)

Bathroom







Ground Floor



First Floor

Total Area: approx. 151.3 m² ... 1629 ft²

THE FLOORPLAN IS FOR ILLUSTRATIVE PURPOSES ONLY AND IS NOT TO SCALE.
 Measurements and features are approximate and may differ from the actual property. Verify all details independently; no liability is accepted for errors or omissions.

Property marketing provided by www.fotomarketing.co.uk