



St. Andrew's Road

Surbiton, KT6 4DT

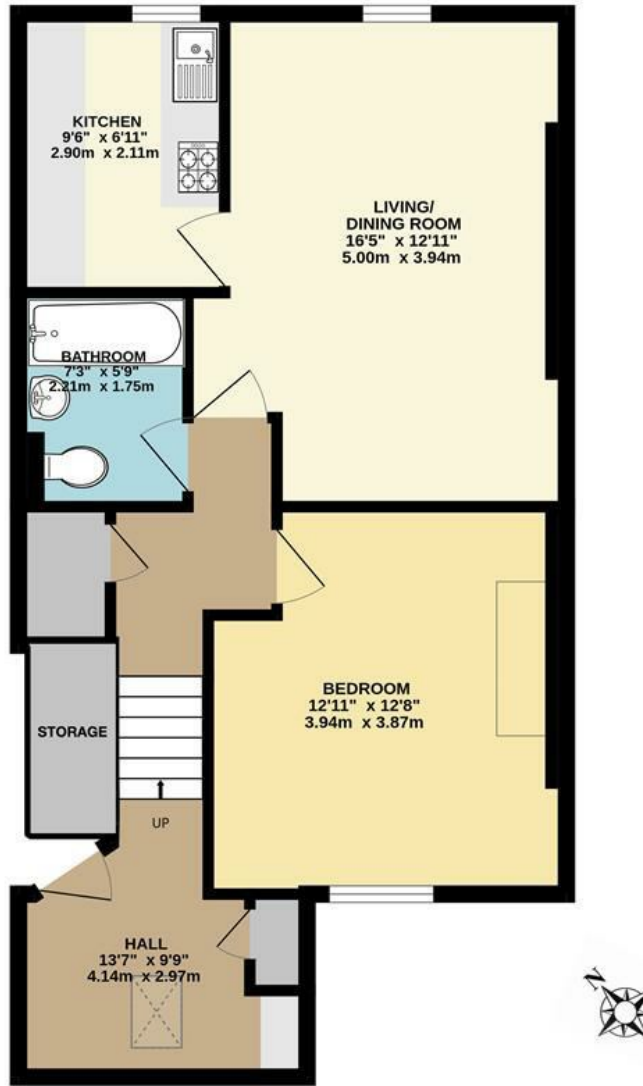
Guide Price £300,000

A well proportioned one bedroom flat set within a charming period conversion in the heart of Surbiton. This brilliant property offers spacious living arranged over the top floor of this pretty Victorian property, a stones throw from local amenities and mainline train station with its fast services to Waterloo. The accommodation comprises an entrance hall with stairs leading up to a double bedroom with plenty of storage, a nicely proportioned reception, room, separate kitchen and bathroom. Further benefits include good decorative order throughout, plenty of storage and offered to market with no onward chain. Council Tax Kingston Band C.

Material Information: Walls Brick, Roof Tiles. Electricity / Water / Sewerage: Mains. Heating: Gas mains. Broadband: Fibre (FTTC). Mobile Coverage: Indoor: Good. Outdoor: Good

- Pretty Victorian Conversion
- Spacious Accommodation
- Separate Kitchen
- No Onward Chain
- Moments from Surbiton and Mainline station
- Top Floor
- Double Bedroom
- Modern Bathroom
- Brilliant Central Location
- Chain Free

Floor Plan

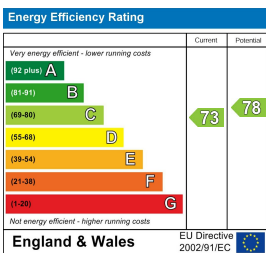


SECOND FLOOR FLAT

ST ANDREWS ROAD, SURBITON
 INTERNAL FLOOR AREA (APPROX.) 592 sq ft/ 55.0 sq m

Whilst every attempt has been made to ensure the accuracy of this floor plan, measurement of doors, windows, rooms and any other items are approximate and no responsibility is taken for any error, omission or mis-statement. Made with Metropix © 2026.

Energy Efficiency Graph



These particulars, whilst believed to be accurate are set out as a general outline only for guidance and do not constitute any part of an offer or contract. Intending purchasers should not rely on them as statements of representation of fact, but must satisfy themselves by inspection or otherwise as to their accuracy. No person in this firm's employment has the authority to make or give any representation or warranty in respect of the property.