

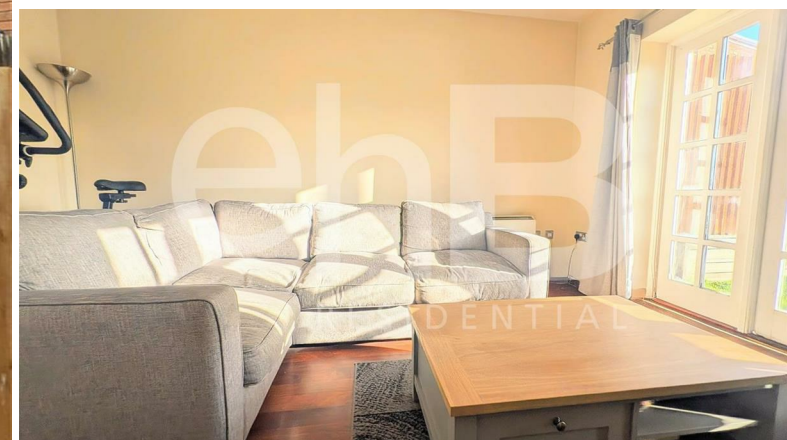


ehB
RESIDENTIAL

Your Property - Our Business

3, Woodman House, Warwick

£1,195 Per Month



Located in the heart of Warwick town centre, this spacious and well-presented house offers comfortable living within easy reach of local shops, cafés and transport links.

The accommodation comprises an entrance hall, a cloakroom, a generous sitting room with doors opening onto an enclosed rear garden, and a well-equipped kitchen/dining room. Upstairs, there are two good-sized bedrooms and a modern bathroom.

The property is offered unfurnished and available from the first week of June 2026

Please note there is no on-site parking; residents' parking permits can be obtained through Warwick District Council.

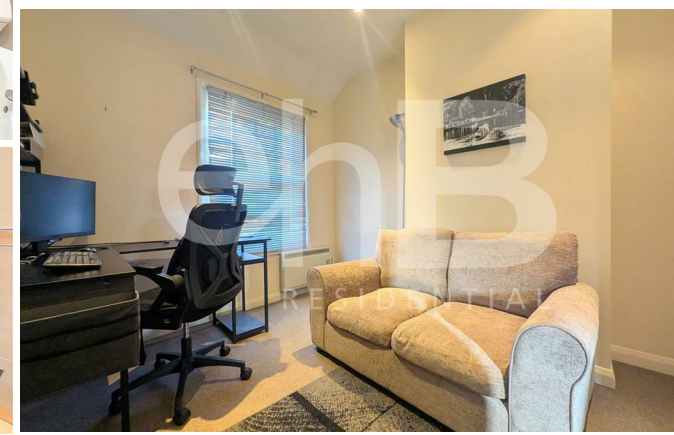
Ideal for professionals or couples seeking a well-located home with plenty of space and convenience.

Energy Rating - D

Warwick District Council Tax Band - D

Holding Deposit - £275.00

Deposit - £1378.00

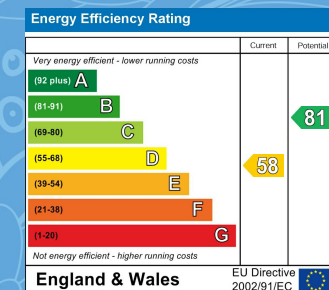


Your Property - Our Business

- Residential Estate Agents •
- Lettings and Property Managers •
- Land and New Homes Agents •

Warwick Office
17-19 Jury Street
Warwick
CV34 4EL

☎ 01926 499540 🌐 ehbresidential.com



Also at: Leamington Spa, Somerset House,
Clarendon Place, Royal Leamington Spa CV32 5QN