



Instinct Guides You



Lennox Street, Weymouth £130,000

- No Onward Chain
- Share Of Freehold - Lease 999 Years
- Two Bedroom Apartment
- Top Floor With Far Reaching Views
- Modern Shower Room
- Close To Beach & Seafront
- Open plan living space
- Close To Bus & Train Links



Registration No. 08079158 Directors Mr Wilson, Mr Tominey

Courtesy Notice Upon using WilsonTominey as selling agents ensure we are made aware of contractual obligations you may be under. We can then proceed accordingly.

WilsonTominey Ltd
15 Westham Rd.
DT4 8NS

T 01305 775500
E sales@wilsontominey.co.uk
W www.wilsontominey.co.uk



Offered with no onward chain, this two-bedroom top-floor apartment is positioned just moments from Weymouth's beautiful seafront, vibrant harbourside and excellent transport links. The home enjoys far-reaching views and bright, pleasant accommodation throughout.

Set at the top of an attractive period building and only a short stroll from the Georgian seafront, the property offers a welcoming and well-arranged layout. At its heart is the open-plan living space, incorporating the kitchen, dining and sitting areas. Two large windows and a skylight create a wonderfully bright and inviting room with generous proportions for a range of furnishings. The kitchen features fitted cabinetry, decorative tiling and space for essential appliances.

Bedroom one is a spacious double, continuing the light and airy feel with two further windows, far-reaching views and a sky lantern. Adjacent sits bedroom two, a large single room offering excellent versatility as a guest room, home office or dressing room.

The shower room comprises a shower cubicle, hand basin and W.C, with a large Velux window providing ample natural light and ventilation.

Location

The property occupies a superb position, exceptionally well served by transport links including both bus and train services, and surrounded by a wealth of shops, restaurants and boutiques. Weymouth's golden sandy beach is just a short walk away, offering a captivating outlook and the perfect setting to enjoy relaxed coastal living.

Shower Room 6'4" x 5'1" (1.94 x 1.56)

Bedroom One 12'7" max x 12'1" max (3.84 max x 3.70 max)

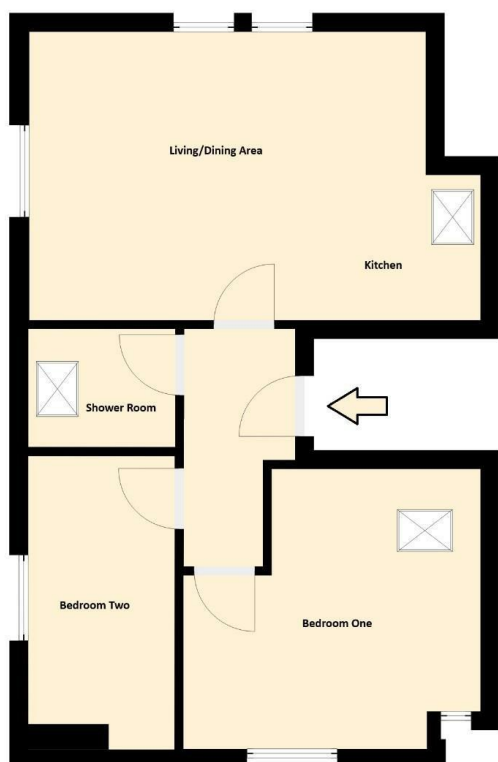
Bedroom Two 12'6" max x 5'11" max (3.83 max x 1.82 max)

Kitchen/Living Space 19'6" max x 12'5" max (5.96 max x 3.81 max)

Lease & Maintenance Information

The vendor informs us that upon completion there will be a new 999 year lease with a 1/7th share of freehold, the maintenance charge is approximately £30pcm, no holiday letting is allowed however pets are considered upon request.

We recommend these details are checked by a solicitor before incurring costs.



Energy Efficiency Rating		Current	Potential
Very energy efficient - lower running costs			
(92 plus) A			
(81-91) B			
(69-80) C			
(55-68) D			
(39-54) E			
(21-38) F			
(1-20) G			
Not energy efficient - higher running costs			
England & Wales		EU Directive 2002/91/EC	73

Environmental Impact (CO ₂) Rating		Current	Potential
Very environmentally friendly - lower CO ₂ emissions			
(92 plus) A			
(81-91) B			
(69-80) C			
(55-68) D			
(39-54) E			
(21-38) F			
(1-20) G			
Not environmentally friendly - higher CO ₂ emissions			
England & Wales		EU Directive 2002/91/EC	

Important Notice: Particulars are prepared for marketing purposes only and should not be treated as a statement of the condition of any building, fixture or appliance. All measurements, floor plans and lease/ maintenance are approximate and not to be relied upon. Purchasers should make their own checks before relying on any of the information provided herein. * For double glazing and gas radiator heating, it is where specified.