

FOR SALE



KASHMIR ROAD ST MATTHEWS LEICESTER LE1 2NH

£160,000

FEATURES

- No chain
- Two Bedroom Maisonette
- Lounge / Diner
- Shower Room
- Gas central heating
- Walking distance to City Centre
- Well presented throughout
- Kitchen
- Off road resident parking bays
- uPVC double glazing



 **SETHS**

2 Bedroom Maisonette for sale in Leicester

ENTRANCE HALL

LOUNGE / DINER

14'7" x 13'1"

Laminate flooring, radiator, storage cupboard, uPVC double glazed window

KITCHEN

12'4" x 8'2"

Wall and base units with worktops over, space for freestanding cooker, sink with mixer tap and drainer, plumbing for washing machine, space for fridge / freezer, tiled flooring, partly tiled walls, uPVC double glazed window.

UPSTAIRS

BEDROOM 1

15'5" x 8'3"

Laminate flooring, radiator, storage cupboard, uPVC double glazed window, access to shared balcony

BEDROOM 2

14'3" x 8'3"

Laminate flooring, radiator, storage cupboard, uPVC double glazed window.

SHOWER ROOM

WC, wash hand basin with mixer tap, shower cubicle with mixer tap and electric showerhead, laminate flooring, partly tiled partly cladded walls, towel radiator, uPVC double glazed window

OUTSIDE

Off road resident parking bays

LEASE

We have been advised by the vendors of the following details. Please note these are approx. figures. Please be advised that whilst we make every effort to ensure these lease details are accurate, these must be verified by any potential purchaser's solicitors to confirm the same.

£194.71 per month - service charge and ground rent inc hot water and heating (24 hours)

£10 ground rent per annum

113 years remaining

ADDITIONAL INFO

Tenure: Leasehold

EPC rating: D

Council Tax Band: A

Council Tax Rate: £1,685.83

Mains Gas: Yes

Mains Electricity: Yes

Mains Water: Yes

Mains Drainage: Yes

Broadband availability: Full Fibre Broadband



UPPINGHAM ROAD OFFICE SALES | 265 UPPINGHAM ROAD, LEICESTER, LE5 4DG

Call us on

0116 266 9977

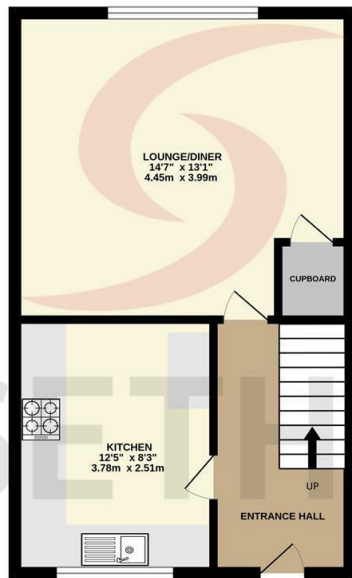
info@seths.co.uk

www.seths.co.uk

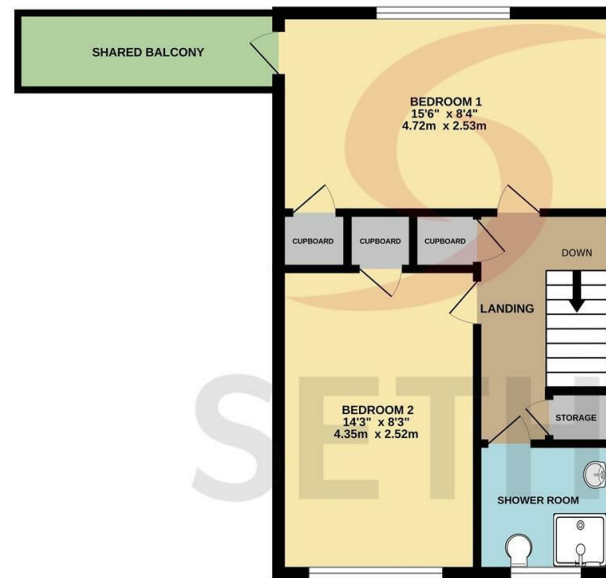
Council Tax Band

A

GROUND FLOOR



1ST FLOOR



Agents Note: Whilst every care has been taken to prepare these particulars, they are for guidance purposes only. All measurements are approximate and are for general guidance purposes only and whilst every care has been taken to ensure their accuracy, they should not be relied upon and potential buyers are advised to recheck the measurements.

