



Swafeld Rise, North Walsham NR28 0DG

welcome to

Swafield Rise, North Walsham

Enjoying a beautifully maintained garden, this three-bedroom detached bungalow is set within a cul-de-sac location in North Walsham and is offered with no onward chain, ideal for those seeking comfortable single-level living.



Situated on the outskirts of North Walsham, this well-presented three-bedroom detached bungalow occupies a quiet private cul-de-sac and is offered for sale with no onward chain. Ideal for families or those seeking the convenience of single-level living.

A particular highlight is the beautifully maintained rear garden, which enjoys open field views and offers a peaceful, private setting. The garden features a lawn, patio areas, well-stocked flower beds, mature shrubs and trees, along with a greenhouse, garden shed, and side access to the front. The front garden is low maintenance, mainly laid to shingle with established planting. The accommodation comprises entrance porch, entrance hall, cloakroom, lounge/diner, kitchen/diner, three double bedrooms, and a family bathroom. Externally, the property benefits from a single attached garage and driveway parking for approximately four vehicles.

Entrance Porch

Double glazed sliding door to the front aspect, door into the entrance hall, electric meter cupboard and tiled flooring.

Entrance Hall

Airing cupboard housing hot water tank, access into loft space, radiator and carpeted flooring.

Shower Room

Suite comprising WC, wash hand basin, shower cubicle, part tiled walls, vinyl flooring and a double-glazed window to the side aspect.

Lounge

Double glazed window to the front aspect, brick fireplace with electric fire, two radiators and carpeted flooring.

Conservatory

Of uPvc construction with brick base, electric radiators, tiled flooring, double glazed door to the

side aspect allowing access into rear garden and double-glazed windows to the rear and side aspects.

Kitchen

Fitted kitchen with a range of wall and base units with work surfaces over, electric oven, gas hob with cooker hood above, stainless steel sink drainer, tiled splashback, space for fridge freezer, plumbing for washing machine, space for tumble dryer, gas central heating boiler, radiator, vinyl flooring, double glazed door to the side aspect and a double glazed window to the rear aspect.

Bedroom One

Double glazed window to the front aspect, fitted wardrobes, radiator and carpeted flooring.

Bedroom Two

Double glazed window to the front aspect, fitted wardrobes, radiator and carpeted flooring.

Bedroom Three

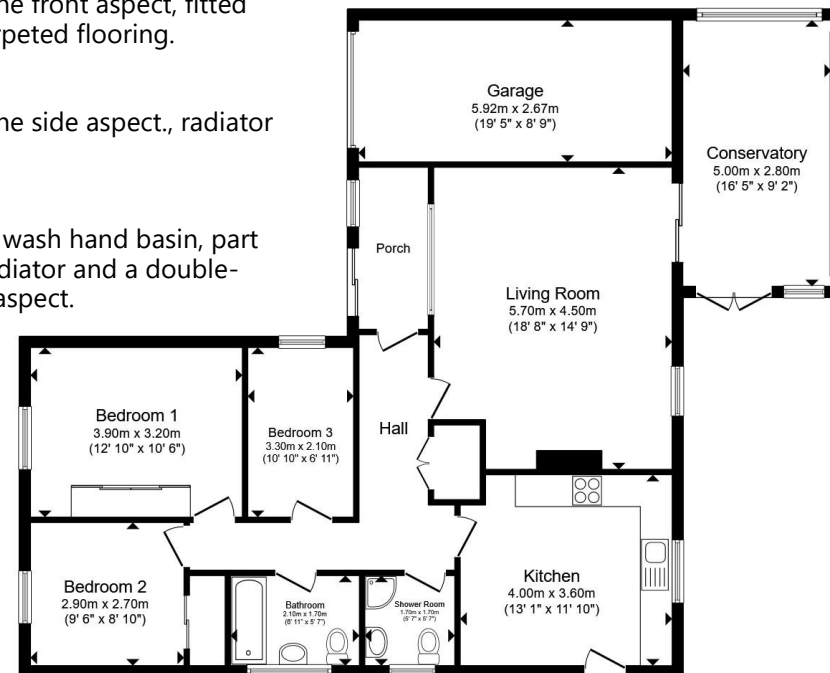
Double glazed window to the side aspect., radiator and carpeted flooring.

Bathroom

Suite comprising bath, WC, wash hand basin, part tiled walls, vinyl flooring, radiator and a double-glazed window to the side aspect.

Exterior

The rear garden is a standout feature, enjoying beautiful open field views and offering a peaceful, well-established outdoor space. Laid mainly to lawn with patio seating areas, the garden is bordered by mature flower beds and an abundance of plants, trees and shrubs, creating a private and attractive setting. Additional features include a greenhouse and garden shed, ideal for keen gardeners. To the front, the property benefits from a low-maintenance garden laid to shingle with established planting, along with a shingle driveway providing parking for up to four vehicles and access to a single attached garage with up-and-over door, power and lighting. Side access leads directly to the rear garden.



Total floor area 124.3 m² (1,337 sq.ft.) approx

This floor plan is for illustrative purposes only. It is not drawn to scale. Any measurements, floor areas (including any total floor area), openings and orientation are approximate. No details are guaranteed, they cannot be relied upon for any purpose and they do not form part of any agreement. No liability is taken for any error, omission or misstatement. A party must rely upon its own inspection(s). Powered by www.propertybox.io



view this property online williamhbrown.co.uk/Property/NWM110021



welcome to

Swafield Rise, North Walsham

- Lovingly Maintained/Mature Gardens
- Detached Bungalow
- Three Double Bedrooms
- Garage & Driveway Parking
- Cul-De-Sac Location
- No Onward Chain
- Outskirts of North Walsham

Tenure: Freehold EPC Rating: D

Council Tax Band: D

£375,000



Please note the marker reflects the postcode not the actual property

view this property online williamhbrown.co.uk/Property/NWM110021



Property Ref:
NWM110021 - 0004

1. MONEY LAUNDERING REGULATIONS Intending purchasers will be asked to produce identification documentation at a later stage and we would ask for your co-operation in order that there is no delay in agreeing the sale. 2. These particulars do not constitute part or all of an offer or contract. 3. The measurements indicated are supplied for guidance only and as such must be considered incorrect. Potential buyers are advised to recheck measurements before committing to any expense. 4. We have not tested any apparatus, equipment, fixtures or services and it is in the buyers interest to check the working condition of any appliances. 5. Where an EPC, or a Home Report (Scotland only) is held for this property, it is available for inspection at the branch by appointment. If you require a printed version of a Home Report, you will need to pay a reasonable production charge reflecting printing and other costs. 6. We are not able to offer an opinion either written or verbal on the content of these reports and this must be obtained from your legal representative. 7. Whilst we take care in preparing these reports, a buyer should ensure that his/her legal representative confirms as soon as possible all matters relating to title including the extent and boundaries of the property and other important matters before exchange of contracts.

William H Brown is a trading name of Sequence (UK) Limited which is registered in England and Wales under company number 4268443, Registered Office is Cumbria House, 16-20 Hockliffe Street, Leighton Buzzard, Bedfordshire, LU7 1GN. VAT Registration Number is 500 2481 05.


william h brown



01692 402861



NorthWalsham@williamhbrown.co.uk



16 Market Street, NORTH WALSHAM, Norfolk,
NR28 9BZ



williamhbrown.co.uk